

# SRC 90 E

– WHEN SPEED, RELIABILITY AND FLEXIBILITY ARE CRUCIAL TO THE TASK!



STOREBRO  
*Royal Cruiser*



**The SRC 90 E** is a completely new type of special task vessel from Storebro. Built for extra demanding sea-duties, the advanced design with minimum displacement and draft, give this highly manoeuvrable vessel excellent speed, acceleration and braking resources together with an extremely tight turning radius. Even in very shallow waters.



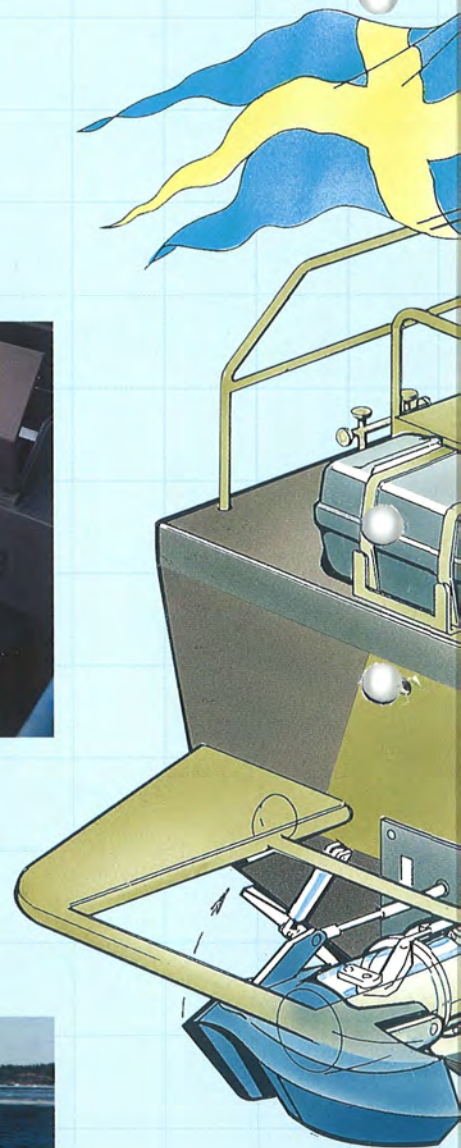
The SRC 90 E is exceptionally rugged. The hull and superstructure are made from a carbon fibre reinforced vinyl ester sandwich. The built-in laminate reinforcement of the keel and bottom of the boat protect it during amphibious operations.

The wheel house and cabin have inertial suspension and effective sound proofing to enhance crew and passenger comfort and ease all on board activities, even at high speeds and in high seas.

The SRC 90 E is powered by a diesel engine with water jet propulsion system, which develops a maximum speed of 40 knots. The vessel has a 2 tonne loading capacity and only needs a crew of 2. It is designed for easy servicing and maintenance with minimum slip and downtime. Every item on the service and maintenance schedule is easy to identify and is designed for good accessibility.

The SRC 90 E can be equipped for a wide range of marine tasks – Naval forces, Police, Ambulance, Coast Guard, Search & Rescue, Customs, Civil work boat, Water taxi, or any role where high speed, reliability and flexibility are essential.

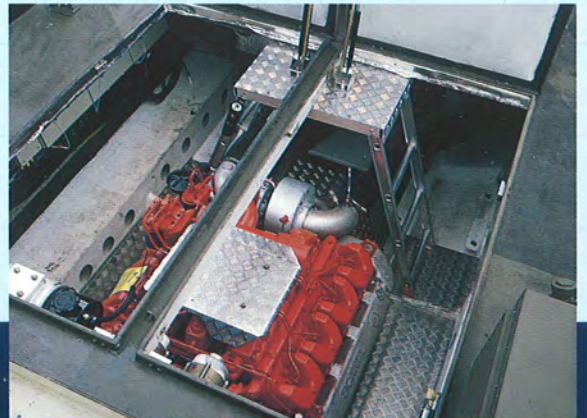
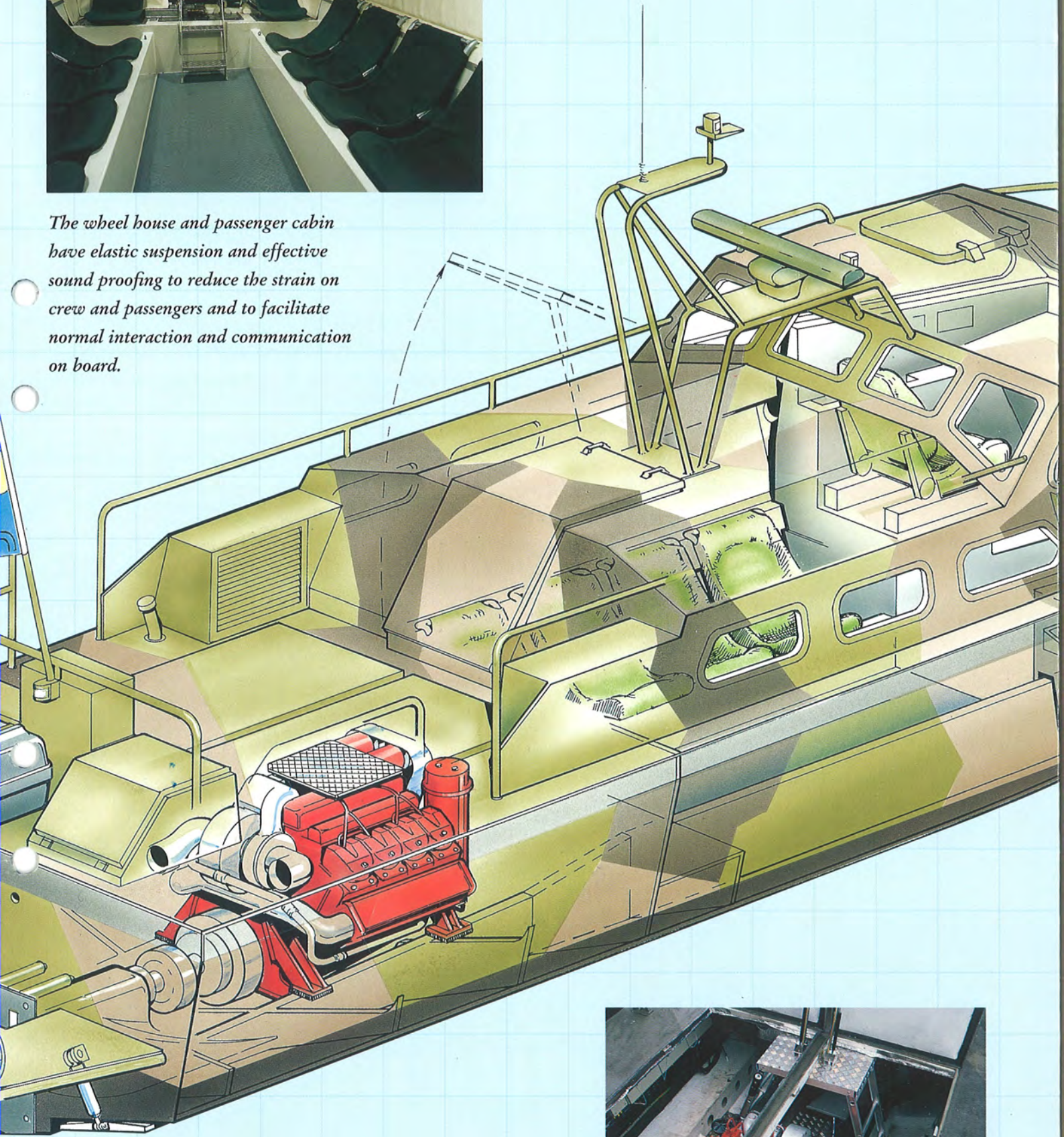
The SRC 90 E provides a flexible platform for equipment, fittings and instrumentation. This multi-role vessel can be tailored to each user's requirements to ensure that every vessel is perfectly suited for its intended task.



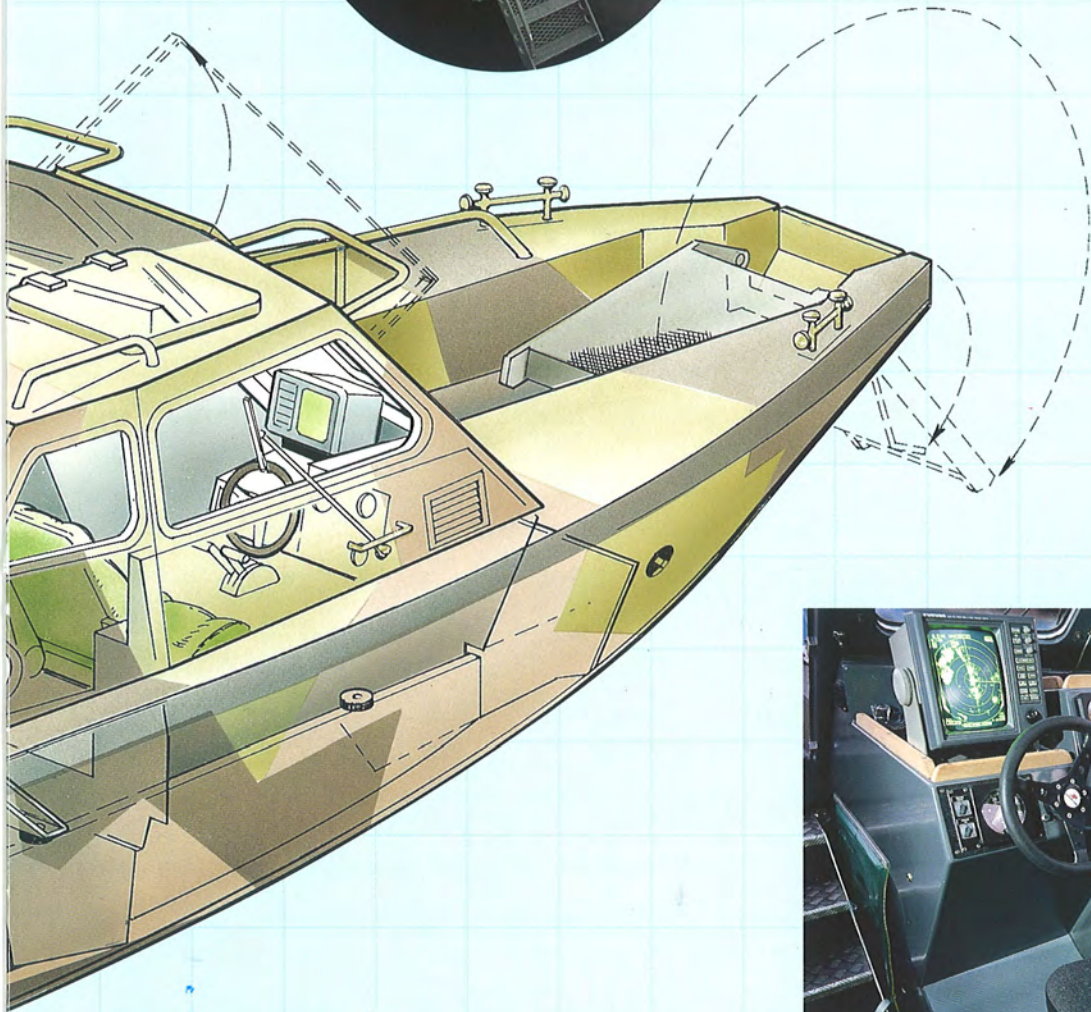




*The wheel house and passenger cabin have elastic suspension and effective sound proofing to reduce the strain on crew and passengers and to facilitate normal interaction and communication on board.*







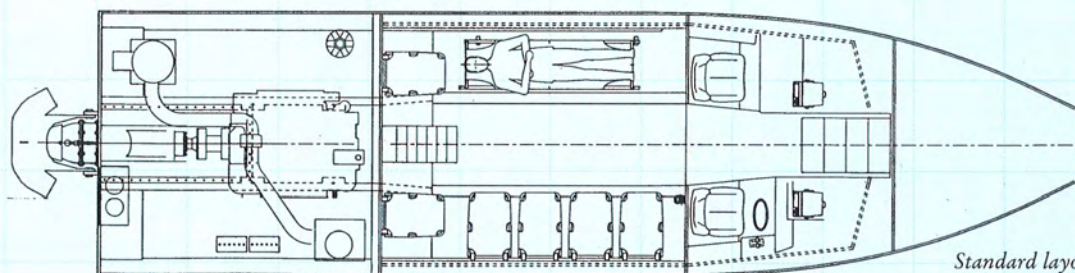
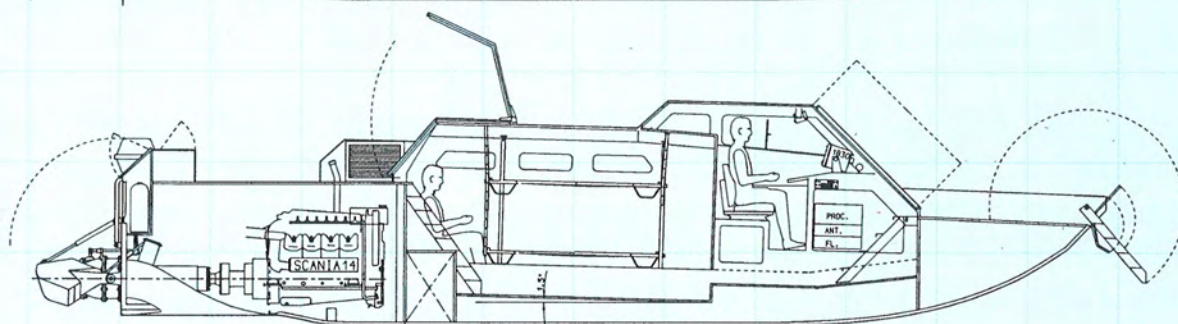
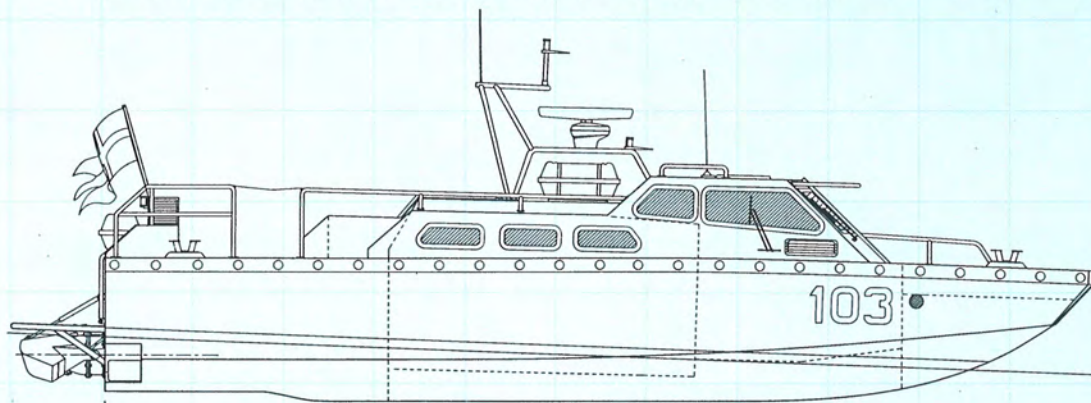
*The hull and superstructure are made from carbon fibre reinforced vinyl ester sandwich construction which enables the SRC 90 E to cope with stresses and strains far beyond the normal.*

*Built-in laminate reinforcements protect the boat during amphibious landing procedures and when operating in very shallow waters.*

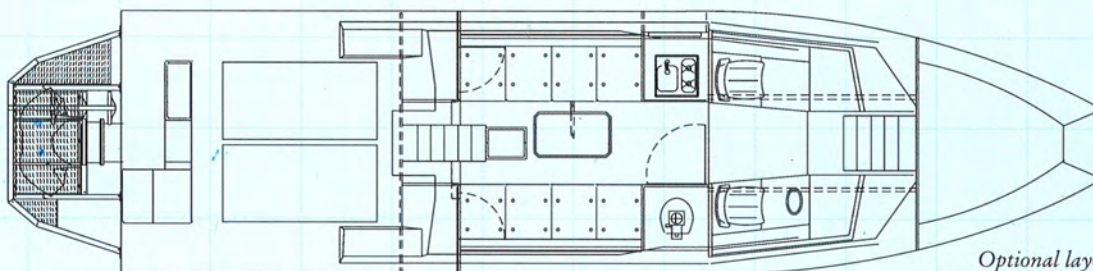




# SPECIFICATION SRC 90 E



Standard layout  
- optional layouts available.

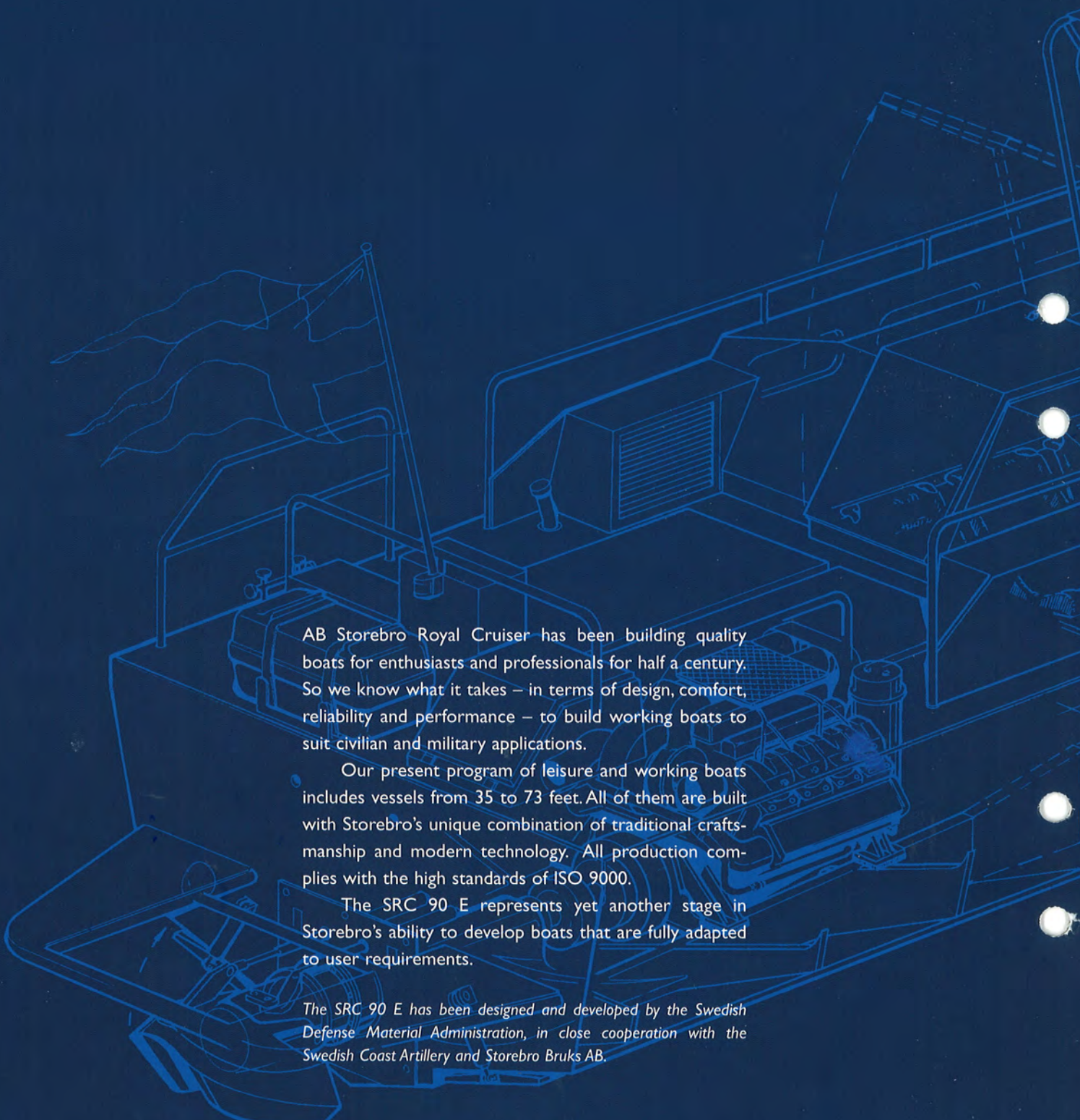


Optional layout example.

-1 m 0 m 1 m 2 m 3 m 4 m 5 m 6 m 7 m 8 m 9 m 10 m 11 m 12 m

|   |   |
|---|---|
| Length over all (LOA)   | 11.88 m (including the water jet)                         |
| Length (hull)   | 10.80 m   |
| Beam  | 2.90 m  |
| Draft   | 0.70 m  |
| Displacement  | 6.5 tonnes  |
| Height  | 2.65 m (with mast and radar in transport position)        |
| Load capacity   | 2.0 tonnes  |
| Engine system   | Diesel engine, single or twin                             |
| Propulsion system   | Water jet   |
| Fuel capacity   | 600 litres  |
| Maximum speed   | Single engine appr. 40 knots, twin engines appr. 47 knots |
| Seats for 2 crew members, place for 4 - 5 stretchers or 6 - 10 passenger seats. |   |





AB Storebro Royal Cruiser has been building quality boats for enthusiasts and professionals for half a century. So we know what it takes – in terms of design, comfort, reliability and performance – to build working boats to suit civilian and military applications.

Our present program of leisure and working boats includes vessels from 35 to 73 feet. All of them are built with Storebro's unique combination of traditional craftsmanship and modern technology. All production complies with the high standards of ISO 9000.

The SRC 90 E represents yet another stage in Storebro's ability to develop boats that are fully adapted to user requirements.

*The SRC 90 E has been designed and developed by the Swedish Defense Material Administration, in close cooperation with the Swedish Coast Artillery and Storebro Bruks AB.*



**STOREBRO**  
*Royal Cruiser*

STOREBRO BRUKS AB · S-590 83 STOREBRO · SWEDEN · PHONE +46 (0)492-19500 · FAX +46 (0)492-30300  
E-MAIL: [info@storebro.se](mailto:info@storebro.se) · INTERNET: [www.storebro.se](http://www.storebro.se)