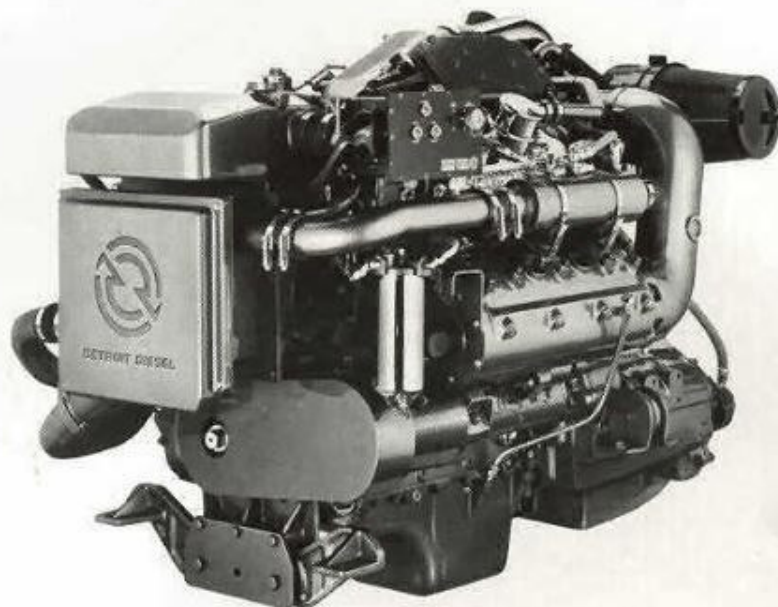


DETROIT DIESEL



6V-92TA
550 BHP

Marine Pleasure Craft



General Specifications

Basic Engine	6V-92TA
Model—Port	8062-3403
Starboard	8062-7403
Description	Turbocharged-Aftercooled with Bypass Blower
Number of Cylinders	6
Bore and Stroke	4.84 in x 5.00 in (123 mm x 127 mm)
Displacement	552 cu in (9.05 liters)
Compression Ratio	17.0 to 1
Weight (dry)	2690 lbs (1223 kg)

Rated Power Output—Maximum 145 Injector

Gross Power	550 BHP (410 kW) @ 2300 RPM
Net Power	535 SHP (399 kW) @ 2300 RPM

Rated Power Output—Intermittent-Maximum

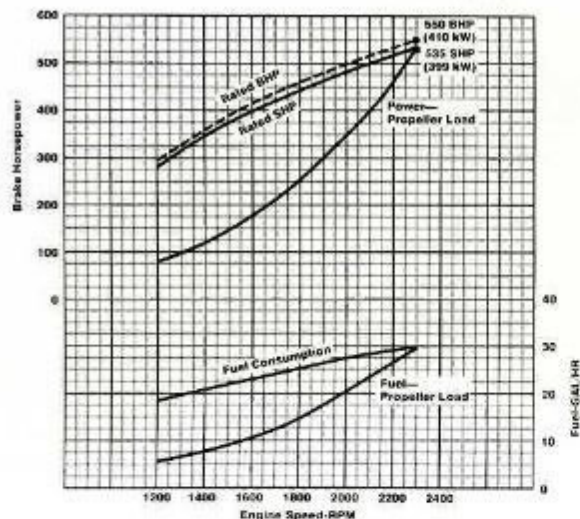
Gross Power	475 BHP (354 kW) @ 2300 RPM
Net Power	455 SHP (339 kW) @ 2300 RPM

Equipment Specifications

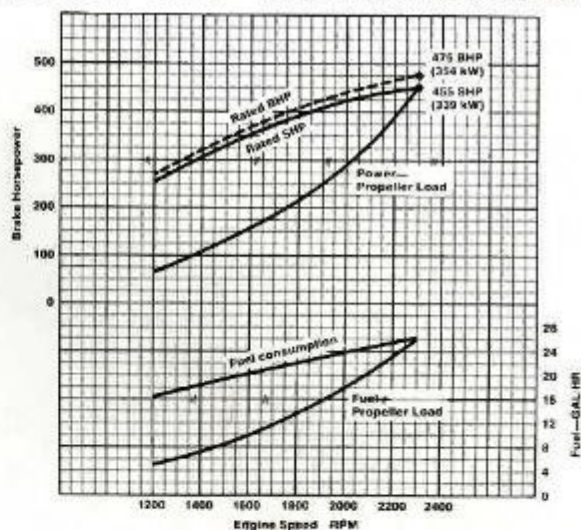
Air Inlet Housing—With manual or electrical shutdown
Aftercooler—Two-pass with precooled coolant supply
Alternator—24 volt, 75 amp
Cooling System—Low profile aluminum expansion tank with raw water pump
Crankcase vapor collectors with silencers
Crankshaft Pulley—3 grooves, .50 inch wide
Engine Mounts—Resilient mounts for both engine and marine gear
Exhaust System—Fresh water-cooled manifolds and turbine housing; port or starboard exhaust connection
Flywheel Housing—SAE #2
Fuel System—Cam operated unit injectors with low pressure USCG type A external hoses, fuel filters and cooler
Governor—Variable speed
Lube Oil Filter—Full flow
Marine Gear—Available with Detroit Diesel-5081 (1.51, 1.97 reduction ratios)
Oil Pan—Cast iron, designed for 0°-15° inclination angle, rear sump
Starting Motor—24 volt

Performance Curves

Model 6V-92TA—Maximum



Model 6V-92TA—Intermittent-Maximum



Rating Explanation

RATED BHP Basic engine gross horsepower.

Rated SHP Net power available at the marine gear output flange.

PROPELLER LOAD indicates horsepower absorbed by a typical fixed pitch propeller.

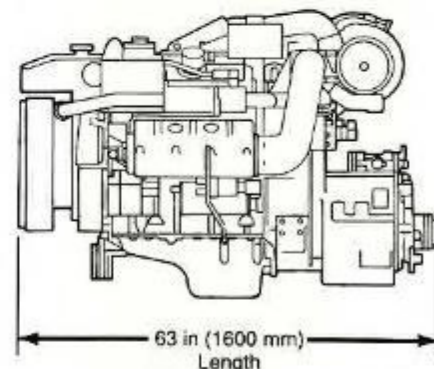
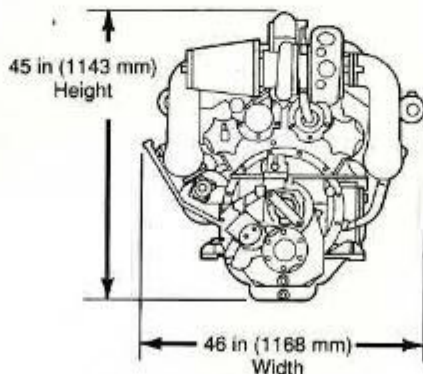
POWER OUTPUT guaranteed within 5% at rated ambient conditions.

MARINE MAXIMUM The marine maximum rating applies to high performance boats where speed is of primary importance and overall load factors are low. Normal or continuous cruising RPM should be limited to 90% of rated engine RPM, and the use of full rated power should be limited to 10% (average) of operating time. This rating is normally reserved for privately-owned yachts in non-revenue applications with an average annual hour accumulation of 500 hrs.

Dimensional Drawing

Model 8062-3403
6V-92TA

Approximate dimensions shown.
For complete dimensional information,
refer to installation drawing
2SA519 and 2SA514.



MARINE INTERMITTENT-MAXIMUM The intermittent-maximum rating is reserved for privately-owned yachts with long-range cruising capability and/or used in seasonal charter operation. Normal or continuous cruising RPM should be limited to 90% of the rated engine RPM and the use of full rated power should be limited to 10% (average) of operating time. All boats in this category are limited to a maximum of 1,000 hours per year.

NOTE: Other boats; e.g., fire, police, with an overall duty cycle similar to maximum or intermittent-maximum may be applied at the appropriate rating.

Consult your authorized Detroit Diesel Corporation representative for the rating that will apply to your vessel.

DETROIT DIESEL
CORPORATION



13400 Outer Drive, West / Detroit, Michigan 48239-4001

Telephone: 313-592-5000

FAX: 313-592-7288

