



STOREBRO J32/S32

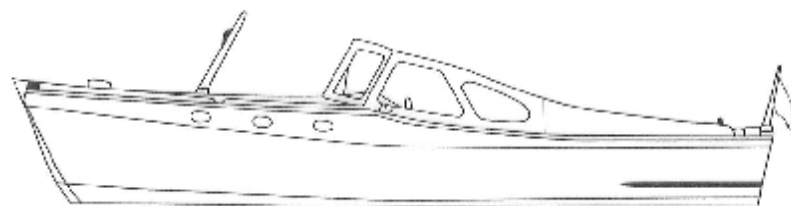





In 1951 we built our first weekend cruiser at Storebro. We named her Solö – Swedish for "Island in the Sun". 21 feet long and almost 7 feet wide, she was built of solid mahogany. The cabin held two berths, a wardrobe and in the large cockpit a small galley. The afterdeck was roomy with ample space for storage. When the sea wasn't too rough a Penta BB-50 marine engine propelled her to 17 sturdy knots.

When the last Solö left our shipyard in 1977, we had already built nearly 3,000 Solö's.

Now, almost 50 years later, it's time for a new weekend cruiser from Storebro to set out to sea. Her name is J32. In homage to her predecessor, her chrome-plated bronze pollards are cast from exactly the same moulds as we used for Solö half a century ago.







A new generation of weekender.  
So different, so bold.

It could only be built by Storebro.



Our mission was to design for Storebro a high performance water jet propelled 31 footer, for people who see motor boating as an important ingredient to their high standard of living, but not necessarily as an integral part of their lifestyle. A boat that is affordable and simple to operate without compromising any of the traditional Storebro values, such as craftsmanship, comfort and seaworthiness. Furthermore



the boat had to maintain the unmistakable interior woodwork that for generations has been Storebro's mark of excellence.

At the same time we wanted to create something unique.

To achieve this we chose to merge Storebro's heritage with the most advanced boat building technology.

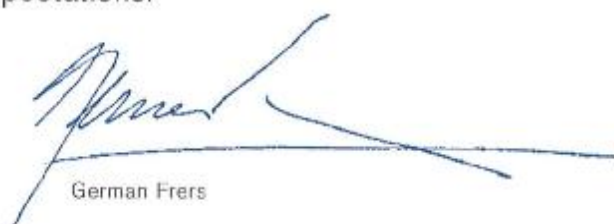




From the fifties we borrowed the beautiful lines of Storebro's classical Solö boats. A design where every form and every detail is the answer to a specific function.

From the nineties we profited from the use of our computer software to produce a seakindly hull shape which is perfectly matched to the water jet technology. A combination that optimises performance, shallow draft, and handling while giving an extremely quiet and steady ride with the smallest possible effect on environment.

The past met the future and the first new Storebro weekender in almost 50 years was born. Our task had been successfully completed. The final result satisfied all our expectations."



German Frers







**Where high tech meets high touch.**

If you want to get ahead, you must dare to be different.

That's why we chose to equip the new Storebro J32 weekender with water jet propulsion. (For those who prefer a more traditional drive, we offer a stern drive version; the Storebro S32.)

The combination of water jet and V-shaped hull from aft to stern makes the J32 extremely easy to handle. From full speed ahead to full stop in just over a boat length, U-turns, sideways movements – everything is done literally with a flick of the wrist.











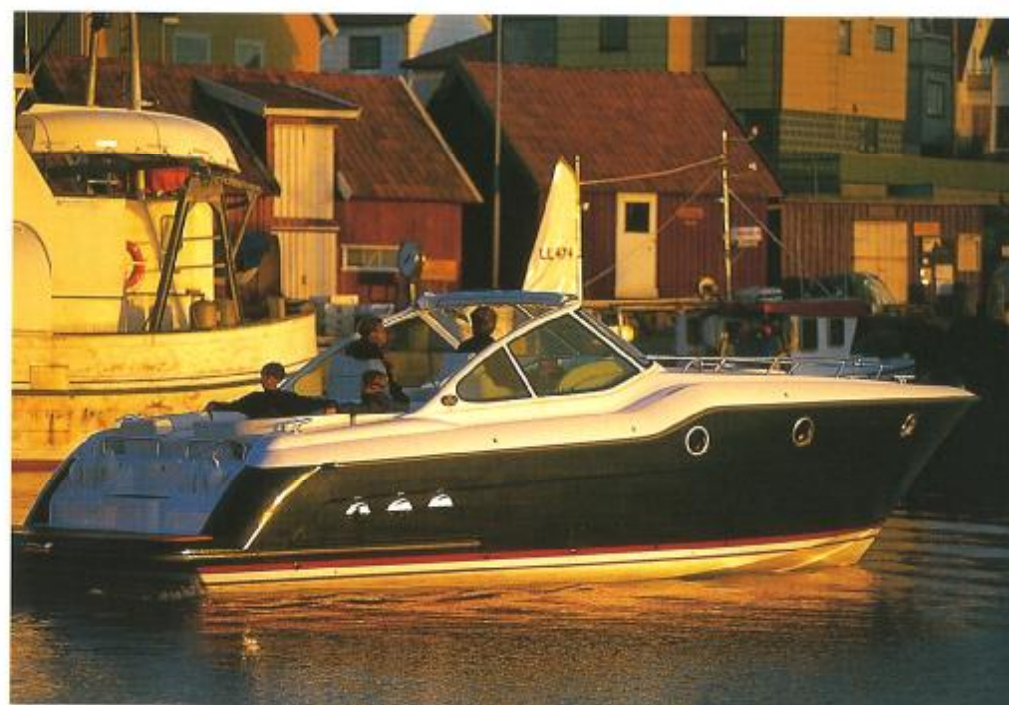
### **A day cruiser on the outside.**

The large aft sundeck with its ample and comfortable sofa, the wide bathing platform integrated in the stern, the elevated driving position – everything aboard the new Storebro J32 is designed with active cruising in mind. Whether you are speeding, scuba diving or just entertaining.

The use of water jet technology means outstanding manoeuvrability at low speeds at times when you might be approaching the quay or entering a natural harbour. This combined with a reinforced keel means that the J32 can inch its way into places and waters where conventional boats dare not go.









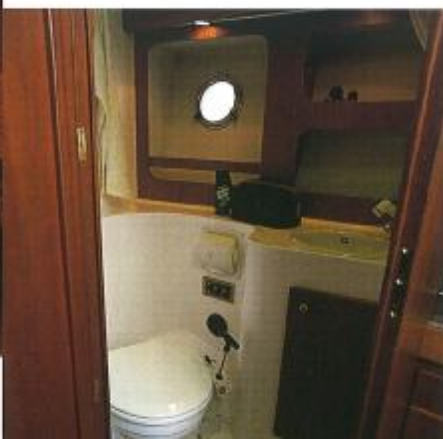
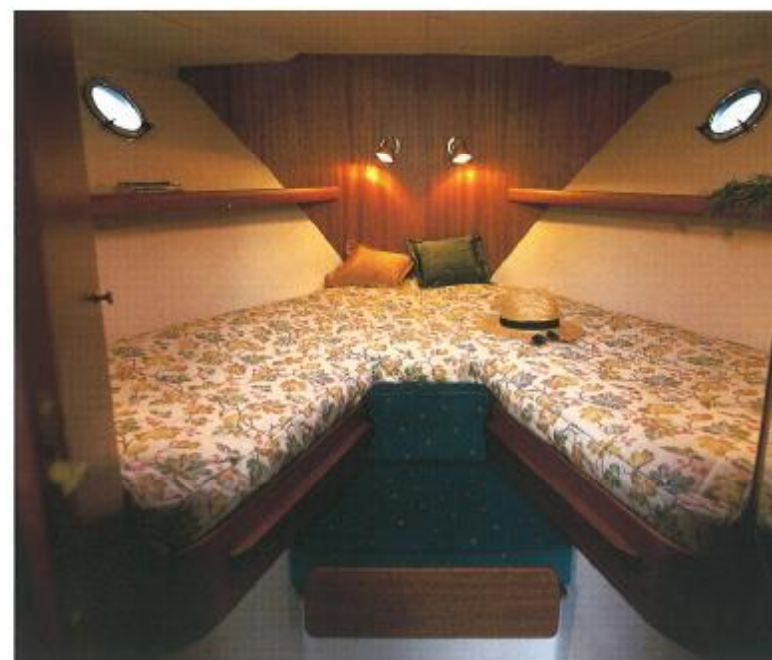
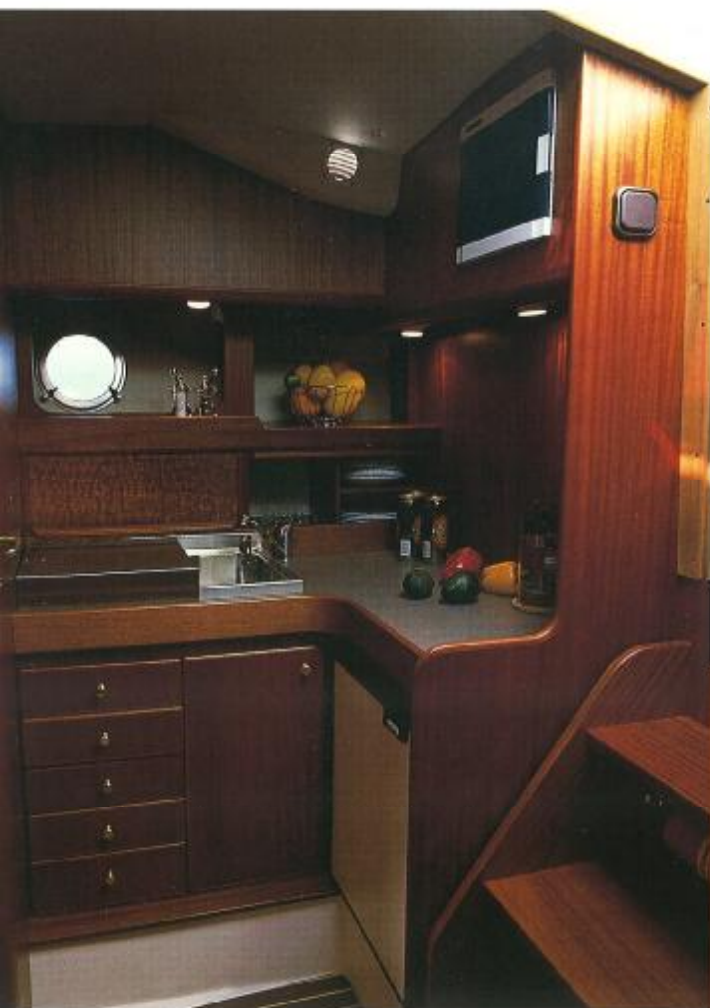
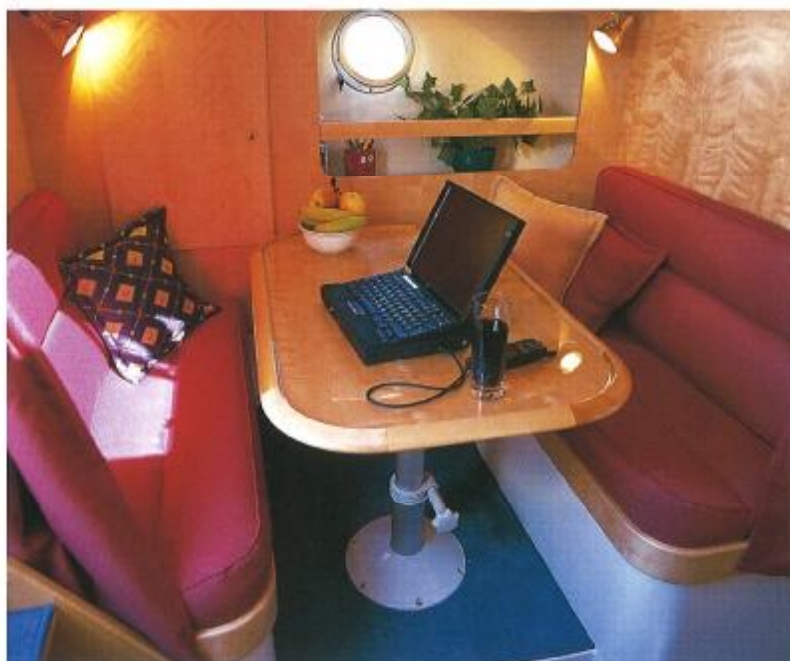




### A Storebro Royal Cruiser hidden within.

The high bow of the Storebro J32 is far from a designers whim.

Step inside the cabin and you will find full standing headroom everywhere; from the well-equipped galley with its spacious dinette, to the generous forepeak and even in the starboard head. You will also find ample room for storage. Above all you will find a wooden interior with a finish and fit-out that are unmistakably Storebro. Either in classical mahogany or in the slightly more daring Scandinavian birch.







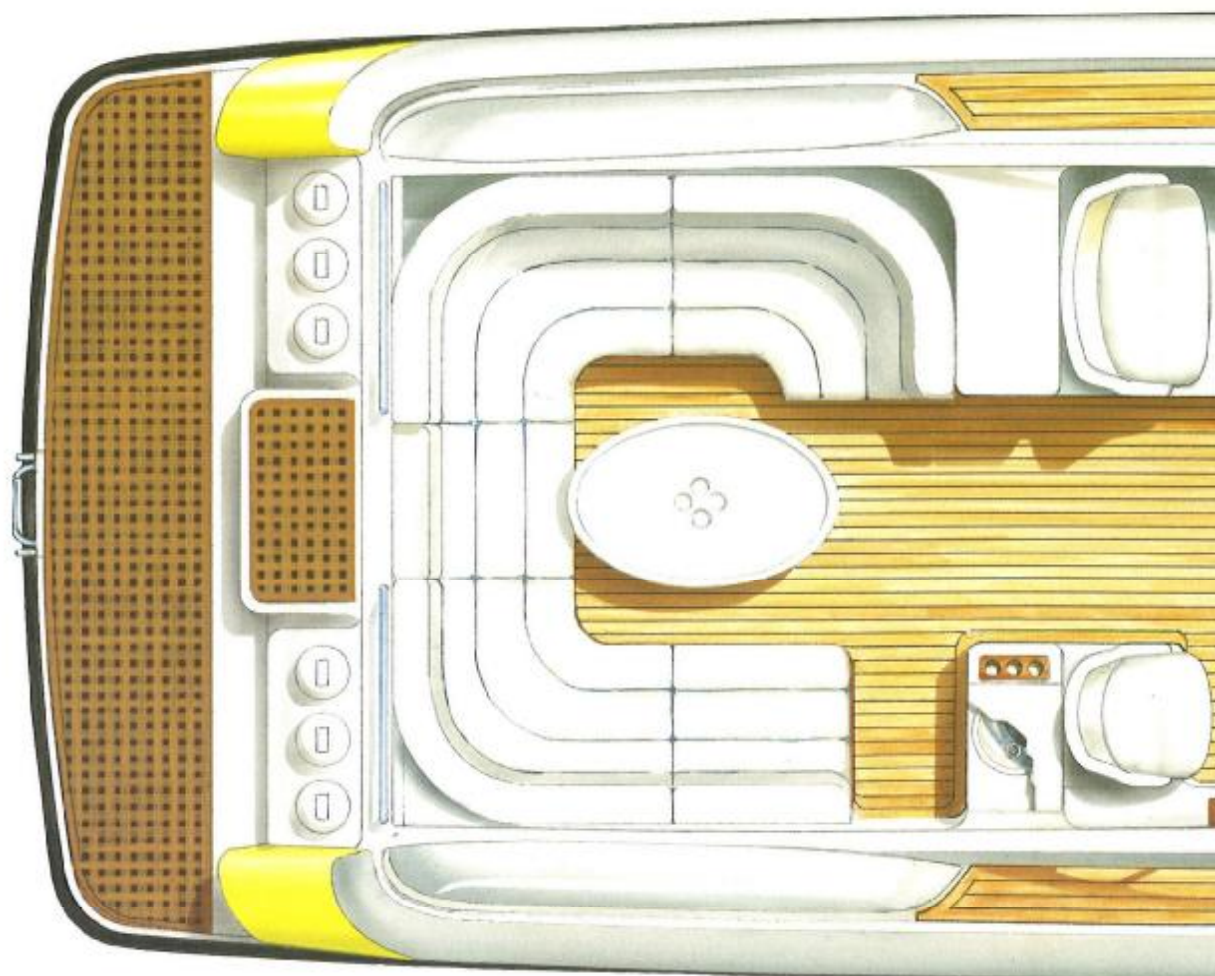
The large afterdeck has ample and comfortable seating and can be fitted with a wide selection of amenities.

### Personally yours.

As with every Storebro, the new J32 weekender is waiting to fulfil your every wish. As always we offer a wide range of options, if by chance your taste and needs outgrow our standard features.

Hull-colour of your choice. Interiors in mahogany or birch. A wide choice of colour-matched fabrics. Dual engines and dual electrical systems. A driving position that's designed and equipped to provide maximum control.

We even include a joy-stick remote control to the stereo, so that you can always keep your hands at the wheel.







The white instrument panels and the GT-style driving wheel at the elevated driving position enhances the already unique look of Storebro J32.



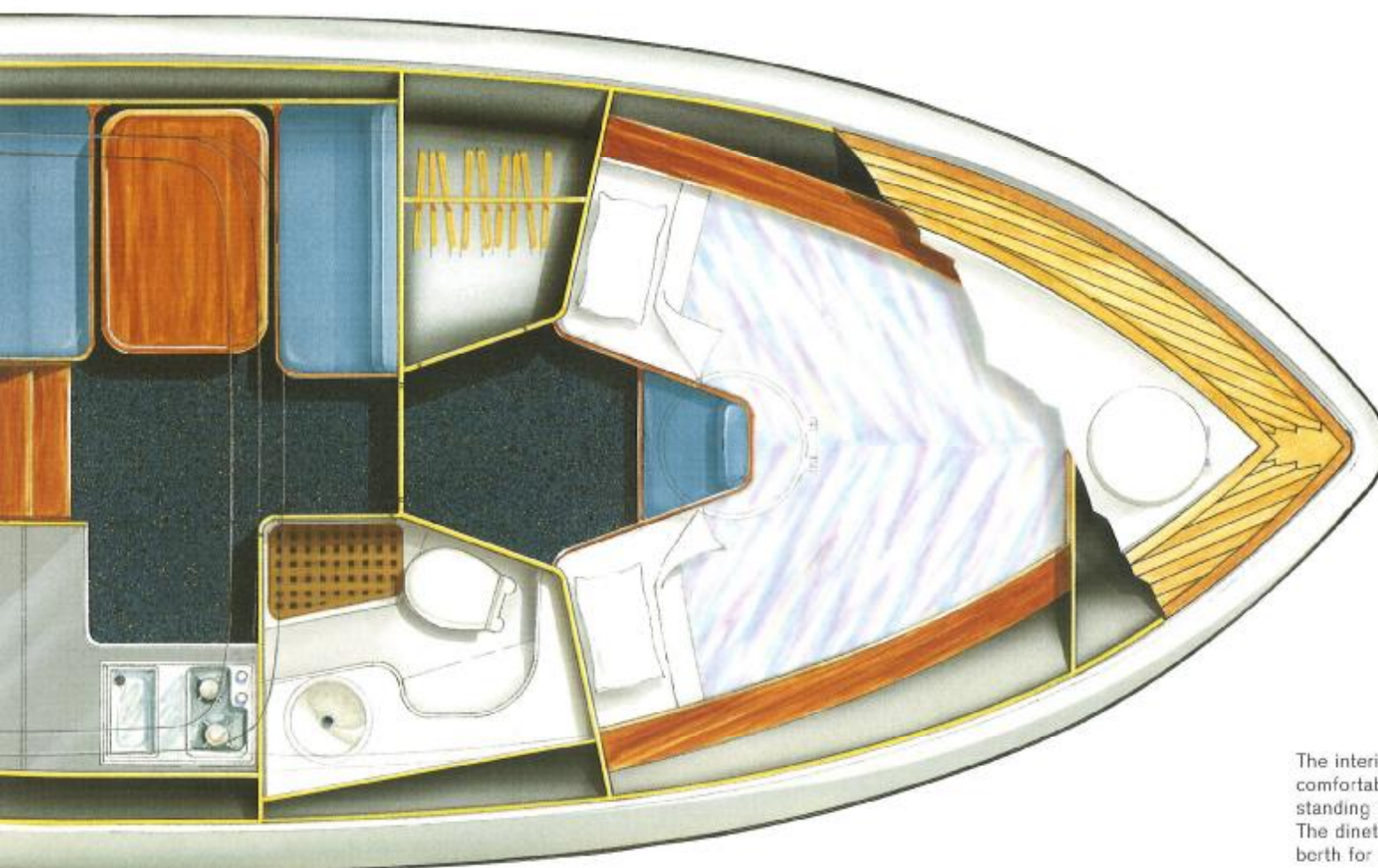
To ensure safety on the foredeck, the Storebro J32 can be fitted with a stainless-steel pulpit, including an integrated bathing ladder.

The cockpit-cover is folded away and concealed in the stern and on the upper edge of the windscreen.

By unfolding the cover from the windscreen, driver and passengers are protected from strong winds and spray.

The cover raised in the "Bermuda" position, giving shelter from the sun while letting the breeze pass through.

The cover raised in the "Nordic" position, completely covering the afterdeck against whatever may come.



The interior of the Storebro J32 is designed to comfortably accommodate its owners, with full standing headroom throughout the cabin. The dinette can easily be converted to a double berth for children or occasional guests.



**STOREBRO J32/S32**

**L.O.A** 10.13 m/33.2 ft

**BEAM** 3.40 m/11.2 ft

**DRAFT** Water jet; appr 0.5 m/1.7 ft  
Stern drive; appr 0.7 m/2.4 ft

**DISPLACEMENT** 5.0 tons (excl fuel and water)

**FUEL CAPACITY** 660 litres/174 US Gal

**FRESH WATER CAPACITY** 165 litres/43 US Gal

**BATTERIES** Engines; 1 x 105 amp-hour  
Service; 2 x 140 amp-hour

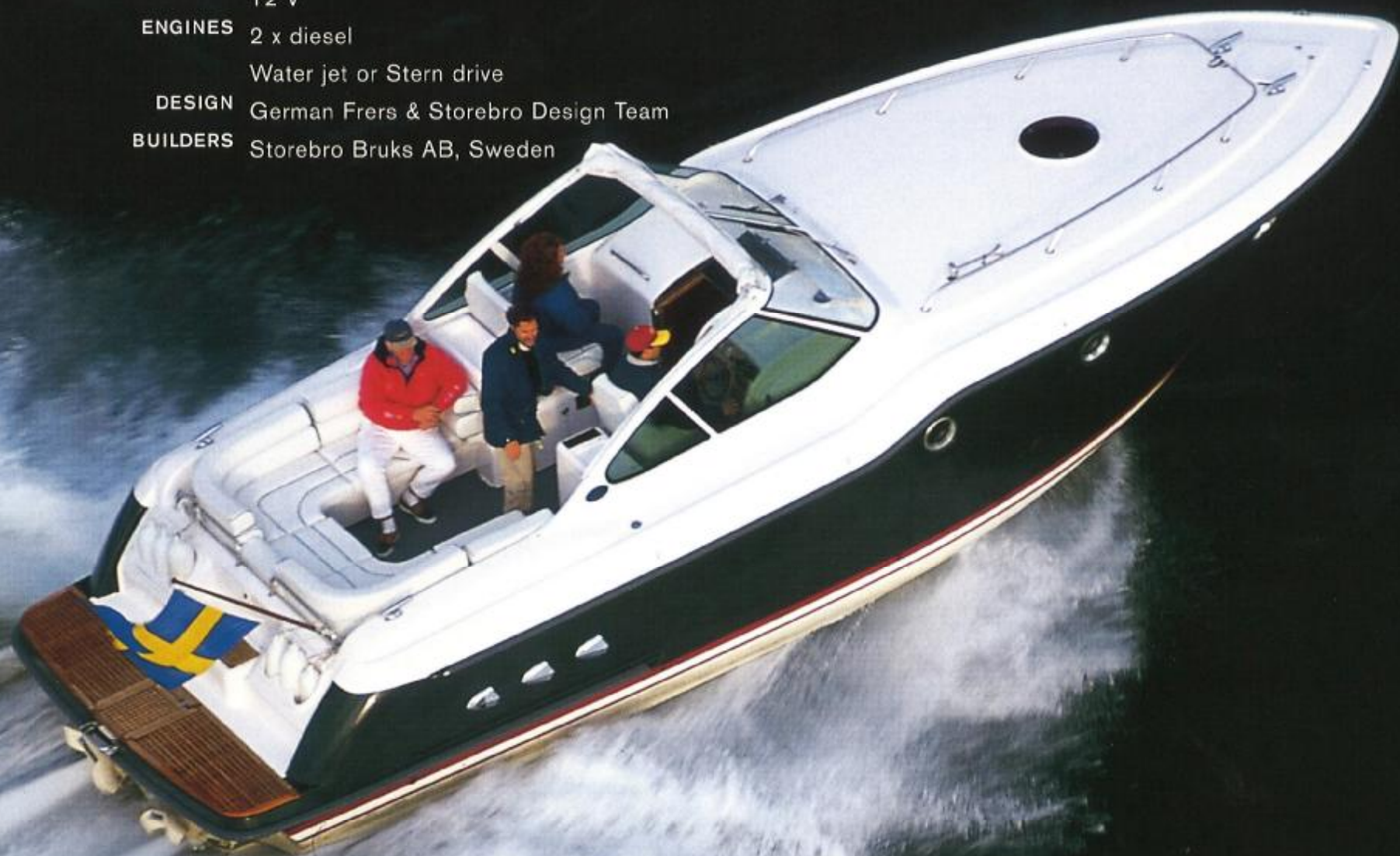
**ELECTRICAL SYSTEM** 12 V

**ENGINES** 2 x diesel

Water jet or Stern drive

**DESIGN** German Frers & Storebro Design Team

**BUILDERS** Storebro Bruks AB, Sweden







The year was 1728. Sixty kilometres from the coastline in the north-eastern part of Småland, in the royal kingdom of Sweden, a small foundry was started.

The iron ore that was used in the tilt hammers was brought up from the bottoms of nearby lakes. Some of the finished bar iron was cast into ship bells that found their way aboard merchant vessels and frigates. Thus began the history of Storebro Bruk and the long and sometimes adventurous voyage that brings us into the present.

Today it's no longer bar iron and ship bells that carries Storebro's name across the seven seas, but cruisers with quality, comfort and seaworthiness far above the ordinary. Because if it's anything the 270 years of history has taught us, it's that only quality withstands the onslaught of time.



For a more detailed specification of the Storebro J32, please contact  
Storebro by phone +46 492 195 00, fax +46 492 303 00 or  
E-mail [info@storebro.se](mailto:info@storebro.se).

You are also most welcome to cruise our home page on the internet;  
[www.storebro.se](http://www.storebro.se).

The boats in the pictures may be equipped with optional features.  
Storebro Bruks AB reserves the right to make alterations without  
prior notice.

Concept & Production: LGNF & Co AB/Arnek Annonsbyrå AB  
Photography: Peter Gunnars, Mats Lindgren, Svante Landström  
Reproduction and printing: Lithoteknik AB, Punkten Tryckeri AB  
Printed on: Nettuno/Sihlprint/MultiArt

Copyright © 1997 Storebro Bruks AB. All rights reserved.





Storebro Bruks AB · S-590 83 Storebro · Sweden

Telephone: +46 492 195 00. Telefax: +46 492 303 00. E-mail: [info@storebro.se](mailto:info@storebro.se). Internet: [www.storebro.se](http://www.storebro.se).