

October 1998

# Sea

America's Western Boating Magazine

Tested

## STOREBRO J32



BY ED LAWRENCE

# Plenty in Store

Storebro's Swedish-designed J32 combines performance, style and strength

With the throttle of a performance cruiser like the Storebro J32 three quarters open and the speedometer registering 36 knots, it doesn't take long to span the north end of Lake Washington, even with a moderate breeze on the nose and slight chop on the lake's shimmering blue surface.

**T**here's a risk to traveling that quickly, though, since most boats are not equipped with brakes and stopping can be difficult. The lake has several speed zones, all of which are actively patrolled by a police force anxious to cite speeding boaters, and shoreside residents who aren't the least



bit timid about reporting violators.

"Hold on," Henry Helliesen said as we approached the "Slow to 8 mph" buoy under the east span of a bridge. He turned the wheel hard to starboard, reversed the position of one of two jet drives, dropped one of the split duct reverse deflectors (or a "bucket," to those who speak jet-ese) and bingo, we'd completed a 180 degree turn and the boat stopped in less than one length. The only time I'd seen that maneuver was aboard a flat-bottomed 18 foot fishing boat on the Rogue River.

"I could have just stopped instead of turning, but water would have come over the transom and I didn't want to get the carpets wet," he said with a sheepish grin. This was just another day at the office for Helliesen, president of McKee and Mooney of Seattle and importer of Storebro boats, and he was enjoying an opportunity to put the boat through its paces.

Then, like a kid with the keys to dad's Porsche, Helliesen shoved the throttles forward again. Eight seconds later, we were on plane at 30 knots. With a deft flick of his wrist the boat effortlessly maneuvered into a tight, 360 degree turn while heeling less than 20 degrees.

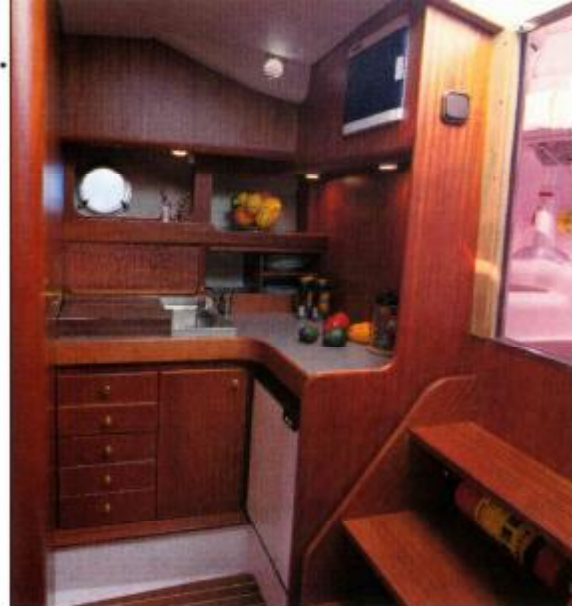
Clearly, naval architect German Frers and the boat's Swedish builders have successfully combined the design of a high-performance hull and twin Hamilton jet drives.

They have also produced a top-drawer cruiser that will meet the demands of the discriminating boater who is looking for both comfort and speed.

Frers has carved out a reputation as one of the more prominent names in naval architecture, primarily by designing elegant, high performance sailboats like the Nautor Swan line. With the introduction of the Storebro J32, he's found a similar niche in the power boating world.

"We are attempting to meet a market of people who see motorboating as an important ingredient in their standard of living, but not necessarily an integral part of their lifestyle," said Frers. "We think that translates to speed, style and comfort without the encumbrances that may be found with larger, more traditional boats."

**Past and Present** — The J32 combines classic lines from the 1950s with 1990s design, technology and performance. The end result is one beautiful boat that impresses from all angles.



"A second criteria was to produce a boat that maintained the interior woodwork for which Storebro has become famous," Frers added.

Though started as a foundry 270 years ago, Storebro has been building boats for more than 50 years, ever since a group of Estonian refugees renowned for their woodworking skills was hired to construct rowing vessels. The company eventually expanded its efforts and introduced a line of motor-powered vessels that included the Solö, a seaworthy, solid mahogany 21-footer. More than 3,000 of that model were produced before construction was halted in 1977 and the company began focusing on larger vessels.

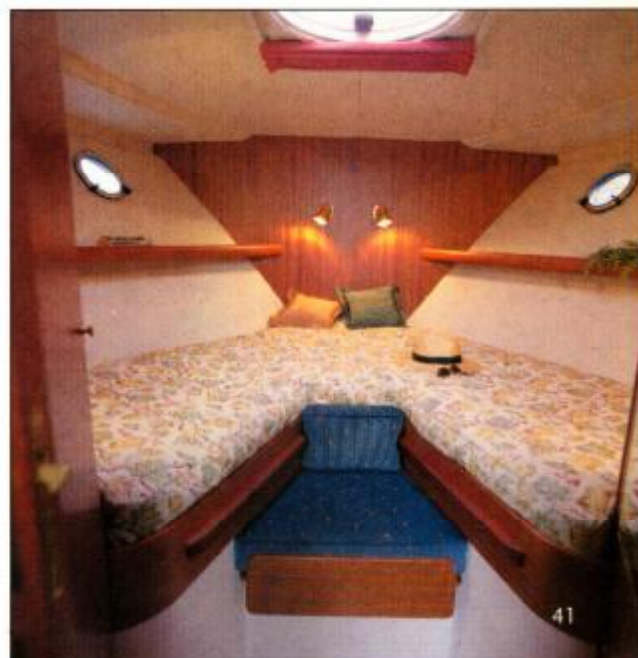
The recent introduction of the 32-footer signals a return to marketing to weekenders, as well as construction of fiberglass hulls capable of withstanding heavy seas found in the Baltic. Though the boat's a sprinter, owners will take comfort in the fact that it is constructed to Det Norske Veritas CE standards (the criteria for the Swedish Bureau of Standards). Translation: The J32 is expected to safely weather Beaufort Force 8 winds and 12 foot waves, conditions boaters prefer to experience in the protection of a marina.

The J32 is also nimble, as we learned when Helliesen sidled up to the dock. That's s-i-d-l-e-d. With practice in positioning the jet drives, it is possible to drive the boat sideways, even when the wind is on the beam.

## More in Store

Since there is more than 60 square feet of living area in the cockpit, guests and crew can relax in comfort, regardless of weather conditions.

**Complete Quarters** — The J32 is the perfect boat for stylish weekenders. The wooden interior, which is unmistakably Storebro, is available in either mahogany or Scandinavian birch. The well-equipped galley features a spacious dinette, the large queen-size V-berth provides both comfort and storage, and everywhere, including the head, has full standing room.



# Top Features

- Impressive performance, shallow draft and quick and responsive handling
- Spacious and comfortable weekender accommodations belowdecks
- Extremely quiet and stable ride
- Cockpit cover features four different positions for cruising
- Large aft sundeck has ample seating and a comfortable sofa

Top speed												
10	15	20	25	30	35	40	45	50	55	60	65	
Miles per gallon @ 30 knot cruise												
.75	1.0	1.5	2.0	2.5	3.0	3.5	4.0	4.5	5.0	5.5	6.0	
Fuel cost for a typical 100 mile weekend of boating												
25	50	75	100	125	150	175	200	225	250	275	300	
Range @ 30 knot cruise												
50	75	100	125	150	175	200	225	250	275	300	325	

\*Based on a fuel price of \$1.05 per gallon

## Specifications

Length	> 33 ft., 2 in.
Beam	> 11 ft., 2 in.
Draft	> 1 ft., 7 in.
Displacement	> 10,000 lbs.
Fuel capacity	> 174 gals.
Water capacity	> 43 gals.
Price, with twin Yanmar 6LP-STEs with Hamilton 211 waterjets	> \$229,000

## Storebro J32 Sport Cruiser

**Builder:**  
Storebro Bruks AB  
S-59083 Storebro  
Sweden  
+011 46 492 195 00

**Western Dealer:**  
McKee and Mooney, Inc.  
901 Fairview Ave. N.  
Suite A-145  
Seattle, WA 98109  
(206) 447-7030

Overstuffed cushions surround the aft section of the cockpit and other creature comforts enhance the environment. The dining area can be made large enough for six adults by retrieving a table stored below and installing it on the cockpit sole. A wet bar is cleverly concealed inside a fiberglass storage compartment aft of the driver's station, and there's storage for mixers in a freezer mounted on stainless steel rails beneath the navigator's seat.

This cockpit arrangement is so versatile that, regardless of whether the wind pipes up, temperatures rise above the comfort level or rainstorms appear, crew and guests can remain abovedecks.

A canvas cover mounted on a stainless steel frame concealed behind the cockpit settees may be raised to the "Nordic" position, which completely encloses the cockpit area. Heat flowing from vents built into the cockpit fills the space with warm air.

As an alternative, the cover can be raised in the "Bermuda" position, which provides shelter from the sun but, with windows removed, allows breezes to flow through.

The driver's station is equipped with a hydraulic steering system that allows for effortless steering, and engine controls are within easy reach. Gauges with readouts for each Yanmar 300 hp engine are installed in a dashboard accented by bright flame birch

surfaces are finished with seven coats of varnish.

As much as boaters may appreciate the warmth of well-finished surfaces, they also like to stand up without banging their heads, a difficult task on some small sportboats. Not so with the J32. The boat's tallish profile translates to more than six feet of standing headroom in the main saloon, master stateroom and the head. Though it might be considered old school, I also liked the fact that fresh air enters the boat through traditionally shaped round ports and a round hatch on the bow.

Crewmembers responsible for cooking will find the galley adequate for light cooking chores; it is provisioned with a two burner stove, a stainless steel sink, storage in five drawers and enclosed cabinets behind the sink. The dining table is located to port.

The master stateroom is surprisingly large for a boat this size. The queen-size V-berth measures six feet seven inches, and there's plenty of storage for weekend get-aways. The dinette converts to a berth that's more than six feet long, so four adults can overnight in comfort.

Storebro has made a dramatic announcement of its return to the weekender market with a boat that will have broad appeal to the boater seeking a combination of style, performance, surroundings and an opportunity to drive sideways. 🐚

