



STOREBRO

TRUE SCANDINAVIAN

Specification

STOREBRO GRAND SERIES No 1





MAIN CHARACTERISTICS

- Length: 18,90 m (62 ft)
- Beam (B max): 5,40 m (17 ft / 8 in)
- Draft (jet): 0,85 m (2 ft / 10 in)
- Draft propeller: 1,45 m (4 ft / 9 in)
- Displacement: approx. 25,0 tons (excl. fuel and water)
- Fuel tank capacity: 3.800 litres/ 1003 US Gal
- Fresh water tank capacity: 800 litres/ 211 US Gal
- Black water tank capacity: 250 litres/ 66 US Gal
- Grey water tank capacity: 200 liters/ 53 US Gal
- Power supply: 12V/24V DC and 230V AC
- Batteries: Service 600 Ah/24V
Start 200 Ah/24V
Generator start 60 Ah/12V
- Propulsion systems: Propellers on shafts and V-drive gearbox or Waterjet system
- Standard engines: 2 x Scania DI 14/82M, 800 hp diesel in combination with shafts and V-drive
- Optional engines: 2 x MAN D 2640 LE 403 EDC, 1050 hp in combination with FF 450 S waterjet system

Hull, deck and superstructure

- Comprehensive hull stringer reinforcement system
- Deck and topsides of hull in sandwich laminate
- Hand-laid fibreglass
- Top layers of hull laminate with ISO - polyester

Interior

- Selected Khaya mahogany with satin finish varnish

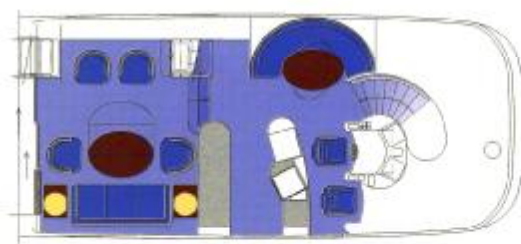
STANDARD EQUIPMENT

Deck

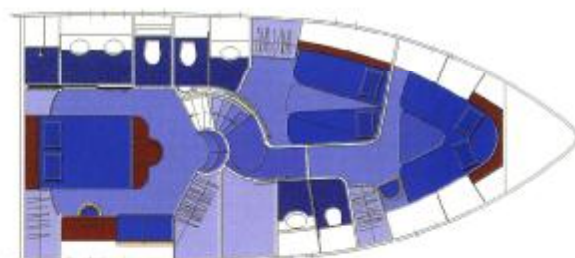
- Anchor light
- Anchor windlass (electric) in bow with 30 kg anchor type Bruce and 40 metres chain
- Boat hooks (2)
- Comfortable stairs from aft deck to flybridge with indirect lighting
- Deck lights on side decks, aft deck and bathing platform
- Engine room access through hatch in aft deck with locking system
- Fender stowage for 4 cylindrical fenders under deck hatch in aft deck
- Flag pole
- Hatch in aft deck sofa for access to storage room/optional crew cabin
- Horn compressor type
- Mooring bollards bow, stern and amidships (6) in stainless steel
- Mooring lines 4x12m and 2x25m
- Mooring winches on aft deck (2)
- Navigation lights in accordance with international standards
- Prepared mounting position, in port stairs to swim platform, for optional el-hydraulic gangway/dinghy lift
- Railings and stanchions in stainless steel
- Raised bulwark to give protected side decks
- Safety glass windows
- Search light remote controlled from both helm positions
- Shower with hot and cold water
- Sofa with cushions on aft deck
- Stainless steel furnished scupper holes in bow, amidships and stern for mooring lines (6)
- Stowage for mooring lines
- Swim platform teak decked with stainless steel foldable swim ladder
- TV antenna
- Teak on main deck



Optional crewcabin



Main deck level



Cabin deck level

- Teak deck on aft deck, stairs to flybridge and bathing platform
- Two gates in aft railing and stairs down to bathing platform incl. indirect lighting in stairs
- Wind screen wipers (3) of parallel type with intermittent relays and wind screen fresh water washing
- Wind screens curved for increased strength

Flying bridge

- Anchor windlass controls
- Autopilot, Simrad AP 22
- Bowthruster controls
- Compass, Silva
- Chart light
- Covers for instrument panel, driver seats, wet bar section and sofa
- Easy access via stairs and hatches from pilothouse and aft deck
- Echo sounder/Log repeater Simrad IS 15
- Electronic engine controls
- Engine monitoring panel with warning light for temperature, oil pressure and el. charging
- Floor lighting
- Fuel gauges
- GPS/plotter/echosounder repeater Simrad DS 42 TFT SUN, 10" daylight colour screen
- Glass holders
- Gullwing mast with combined antenna for TV/radio/VHF/GSM, Radar and GPS antennas,
- J-shaped sofa with cushions and table
- Lights under gullwing mast
- RPM gauges
- Railings and handrails in stainless steel
- Rudder indicator
- Search light, controls
- Sun bed with cushions
- Teak deck
- Trimtab controls
- VHF, Simrad RS 8400
- Helmsman- and passenger seats with cushions
- Wetbar with refrigerator and sink with hot and cold water

Master stateroom

- Bed chest with side lockers and storage for bedspread

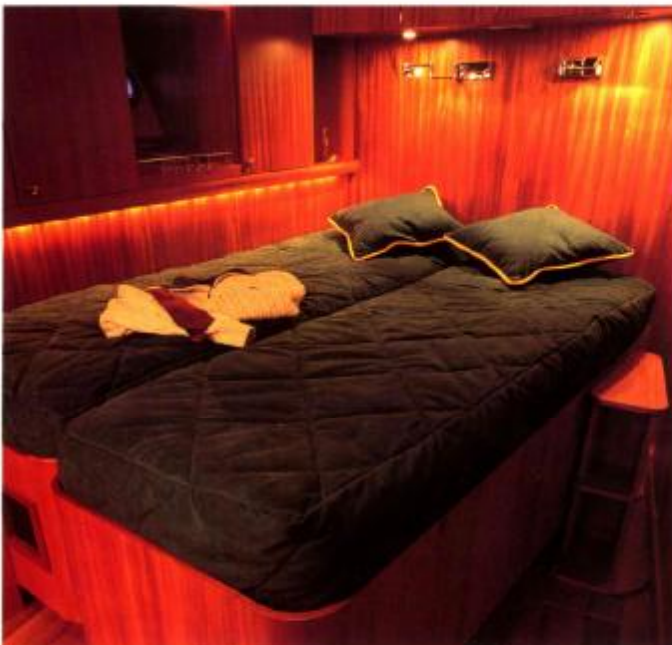
- Bed head with bookshelf
- Bed spread
- Ceiling, cornice, floor and bed lights
- Drawers under bed
- Dressing table/office desk section and chair. Space and el. outlet for laptop PC
- Floor in Merbau, varnished
- Outlets 12 V and 230 V
- Pillows (2)
- Portholes, opening and with blinds, (2)
- Queen-size bed, 2 m long, mattresses with galvanised coil springs and bed mattresses
- Radio with CD player and 2 speakers
- Sofa for two persons with storage under
- Space for TV/Video with antenna and 230 V outlets
- Wardrobes and lockers with lighting

Master head

- Doble washbasins and countertop in "Corian"
- Electric evacuation fan in shower
- Electric vacuum marine toilet
- Entrance to master head via tinted glass sliding door arrangement
- Floor in "Corian"
- Lockers and shelves
- Mirrors
- Outlet 230 V
- One opening porthole in washing room and one in toilet room, with blinds
- Separate shower with glass door, automatically drained to central tank

Guest cabin 1 (port side)

- Beds, two separate, one can be moved alongside the other to make a double bed
- Bedspreads
- Floor in Merbau, varnished
- Lockers and shelves
- Mattresses with galvanised coil springs and with bed mattresses
- Night table
- Porthole, opening and with blinds
- Space for small TV/Video in locker with 12 V / 230 V and antenna outlets
- Storage under bed reachable from bed top
- Wardrobe





Guest head 1

- Electric vacuum marine toilet
- Electric evacuation fan
- Floor in "Corian"
- Lockers
- Mirrors
- Porthole in washing room with blinds
- Foldable glass door to combined toilet/shower compartment
- Wash basin and counter top in "Corian"
- Shower with automatic drainage to central tank

Guest cabin 2 (fore)

- Bed spreads
- Built-in seat
- Floor in Merbau, varnished
- Lockers and shelves
- Mattresses with galvanised coil springs and with bed mattresses
- Two beds in V-shape
- Wardrobe
- Portholes, opening and with blinds (2)
- Skylight hatch to fore deck
- Space for small TV/Video with 12 V, 230 V and antenna outlets

Guest head 2 (also used as day toilet)

- Electric vacuum marine toilet
- Electric evacuation fan
- Floor in "Corian"
- Locker and shelf
- Mirrors
- Porthole in washing room, opening and with blinds
- Shower with automatic drainage to central tank
- Wash basin and counter top in "Corian"

Service room

- First aid kit
- Floor in Merbau
- General lighting

- Outlets 12 V and 230 V
- Space for washing machine or extra freezer
- Storage for supplies

Aft storage room (Can as option be equipped as crew cabin)

- Entrance via hatch in aft deck sofa
- Furnished with a ladder and illumination.

Optional crew cabin

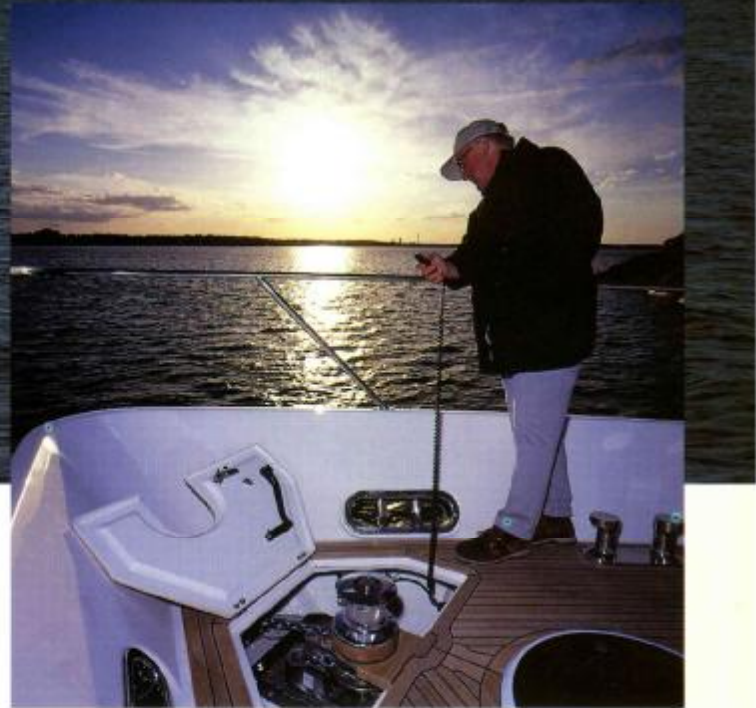
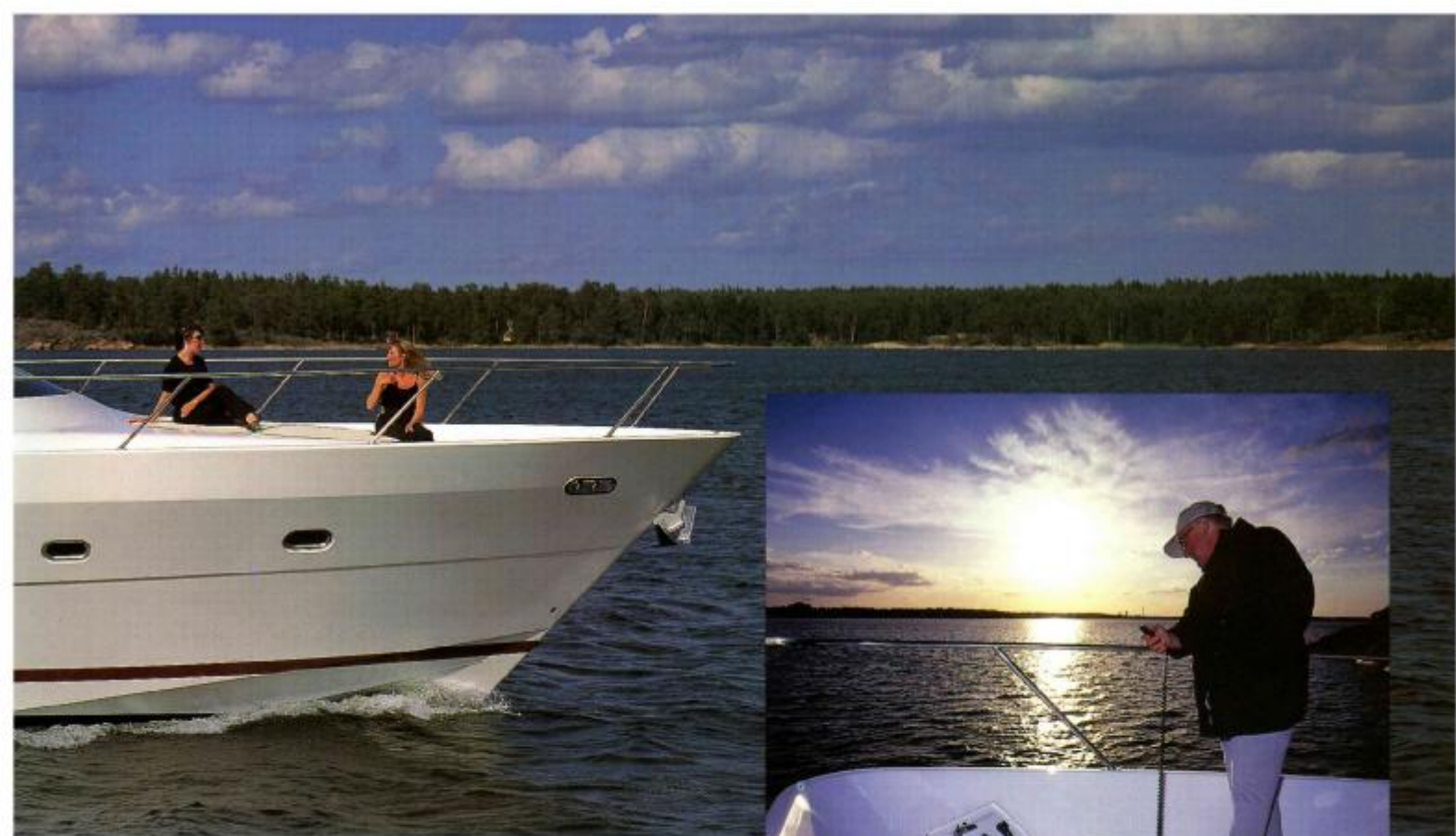
- Electric marine toilet
- Two berths
- Locker
- Washbasin

Deck salon

- Blinds
- Ceiling and cornice lights
- Decorative curtains
- Entertainment centre with TV, Video, Stereoradio, CD/cassette player 230V
- Floor in Merbau, varnished
- Full height cabinet with bar interior and storage including a refrigerator for bottles
- Seating/dining accommodation with sofa, chairs and table
- Side board section for glasses, bottles, A/V-centre and other storage
- Table lamps
- Wide 3-section curved glass door, with stainless steel frames, to aft deck

Galley

- Counter tops and double sinks in "Corian"
- Dishwasher
- Floor in Merbau
- Glass, china and cutlery for 8 persons
- Icemaker
- Lockers, shelves and drawers
- Micro wave oven with grill and built in extractor fan
- Outlets 230 V



- Refrigerators with freezer compartments, two units, 130 liters each, under aft galley counter
- Stove, ceramic with 4 burners, 230 V

Pilot house

- Chart table with chart light and chart locker
- Demister for wind screens
- Distribution panel for 12 V, 24 V and 230 V
- Electrically manoeuvred window to port side deck
- Electronic engine controls
- Helmsman and navigator's seats, adjustable in height and length
- Hydraulic, servo assisted steering system operated with steering wheel
- Instruments for engine temperature, oil pressure, turbo pressure, exhaust temperature, gear box oil pressure, engine hour metre, fuel and freshwater levels, bilge water warning (automatic system), voltmeter for generator, inverter and el. charging function etc
- Joystick manoeuvring at waterjet installation
- Passenger sofa with table
- Phantograph door for direct access to starboard side deck
- Tinted side windows
- Wind screen wipers of parallel type with intermittent relays and with fresh water washing

Instrument panel in Pilot house

- Autopilot, Simrad AP 20
- Controls for washer/wiper, horn, defroster, search light, windlass and bow thruster
- Controls for navigation lights and anchor light
- Control for trimtabs
- Digital gyro compass
- Electronic engine controls
- Engine instruments
- Fuel gauges
- GPS/plotter/echosounder, Simrad CE 50, with high resolution 14" colour screen
- Hailer and mist horn system
- Log

- Magnetic compass
- Outlets 12V and 230 V
- Radar, Simrad RA 42-4, dual range, with 10.4" black/white screen and 4 ft antenna
- RPM meters with integrated hour meters
- Horn (compressor type)
- VHF, Simrad RS 8400, with separate back-up battery

Engine room

- Alarm for water in fuel filters
- Aluminium flooring
- Ceiling lights (4)
- Efficient sound insulation
- Engine room ventilation and air blowers
- Engine room fire extinguisher system according to ISO/DIS 9094-1, (CO₂) including engine room air intake shutters
- Fresh water pump with expansion tank
- Fuel tanks in stainless steel
- Generator Oran 11 kW/1500 RPM
- Racor fuel filters, two in parallel per engine
- Space for oil containers 2 x 10 litres
- Twin engines flexibly mounted
- Water strainers

Tanks

- Fuel tanks in stainless steel, designed with sumps for dirt collecting and draining. Manholes for cleaning
- Grey water tank in stainless steel
- Black water tank in stainless steel
- Black and grey water tanks are fitted with electrical 24 V discharge pumps





- Distribution panel, with circuit breakers and battery monitoring incl schematic boat display showing activated el. consumers
- Shore power connection, with an isolator for galvanic protection

Bilge draining system

- Automatic bilge pumps with acoustic and visual alarm for water in the bilges

Miscellaneous

- Bowthruster electric approx 15 hp
- Central tank for drainage of all showers
- Deck discharge for holding tank
- Deck level closed cut off fuel tank valves and engine room air intakes
- Electro hydraulic trimtabs
- Fresh water tank in stainless steel
- Fire alarm system in every cabin, pilothouse and engine room including activating of emergency lights
- Heating system Webasto
- Hydraulic, servoassisted steering with two steering positions
- Hoses from showers connected to central grey water tank. The tank has a level switch and is drained overboard through a valve in hull

Apparatus installation (in engine room)

- To minimize sound emissions and facilitate handling of essential equipment, space is devoted in the top insulated engine room for most of the systems installed

Electrical system 24V,DC

- Engine starter batteries, total 200 Ah/24V
- Service battery groups, total 600 Ah/24V
- One automatic battery charger 100 A
- Emergency lighting with a separate back-up battery

Electrical system 230 V,AC 50 Hz

- Generator 11 kW with 60 Ah/12V starter battery
- Inverter, 24 V /230 V, 3 kW





Builders

- Storebro bruks AB

Design

- Germán Frers/Tillberg Design/Storebro Bruks AB

Quality and product security systems and Certification

- The boat is built under the regulations in ISO 9002 quality system,
- The construction of the complete boat is approved by Det Norske Veritas, CE certificate category B.

Certain extra equipment may appear in the manufacturers publications.

The manufacturer reserves the right to change the technical specification, equipment and data without prior notice.



Storebro Bruks AB

SE-590 83 Storebro, Sweden
Tel: + 46 492 195 00, Fax: + 46 492 303 00
e-mail: info@storebru.se
Internet: www.storebro.se