



STOREBRO  
*Royal Cruiser*



470

# Storebro Royal Cruiser 470

A new generation of handcrafted family cruisers which combine traditional boat building skills with modern design and technology. In the tradition of it's predecessors, the Royal Cruiser 470 is engineered and built for the discriminating seawise yachtsman. Storebro, recognized as one of the premier builders of high quality Cruisers, has applied it's experience gained in over 40 years of building rugged, seaworthy craft in developing the Royal Cruiser 470.

Skilled swedish craftsmen utilize materials carefully selected for their strength, beauty and ability to withstand the marine environment in hand building each Storebro Royal Cruiser to the meticulous standards demanded by Det Norske Veritas – your assurance of a vessel built to be used and built to last. The Storebro Royal Cruiser 470 is built for seagoing, providing optimum comfort and space while at sea.

Step aboard... and enter a world of elegance comfort, and performance! Storebro's 470 rests on a hull engineered for maximum strength and absolute safety – the hallmark of all Royal Cruisers. The 470 sports a spacious, functional flybridge. The spacious aft deck provides a good area for socialising and relaxing.

The dramatic, clean lines of the exterior design continue inside, with the rich appeal of african mahogany woodwork surrounding you. The interior is designed with typical scandinavian flair and imaginative use of space.

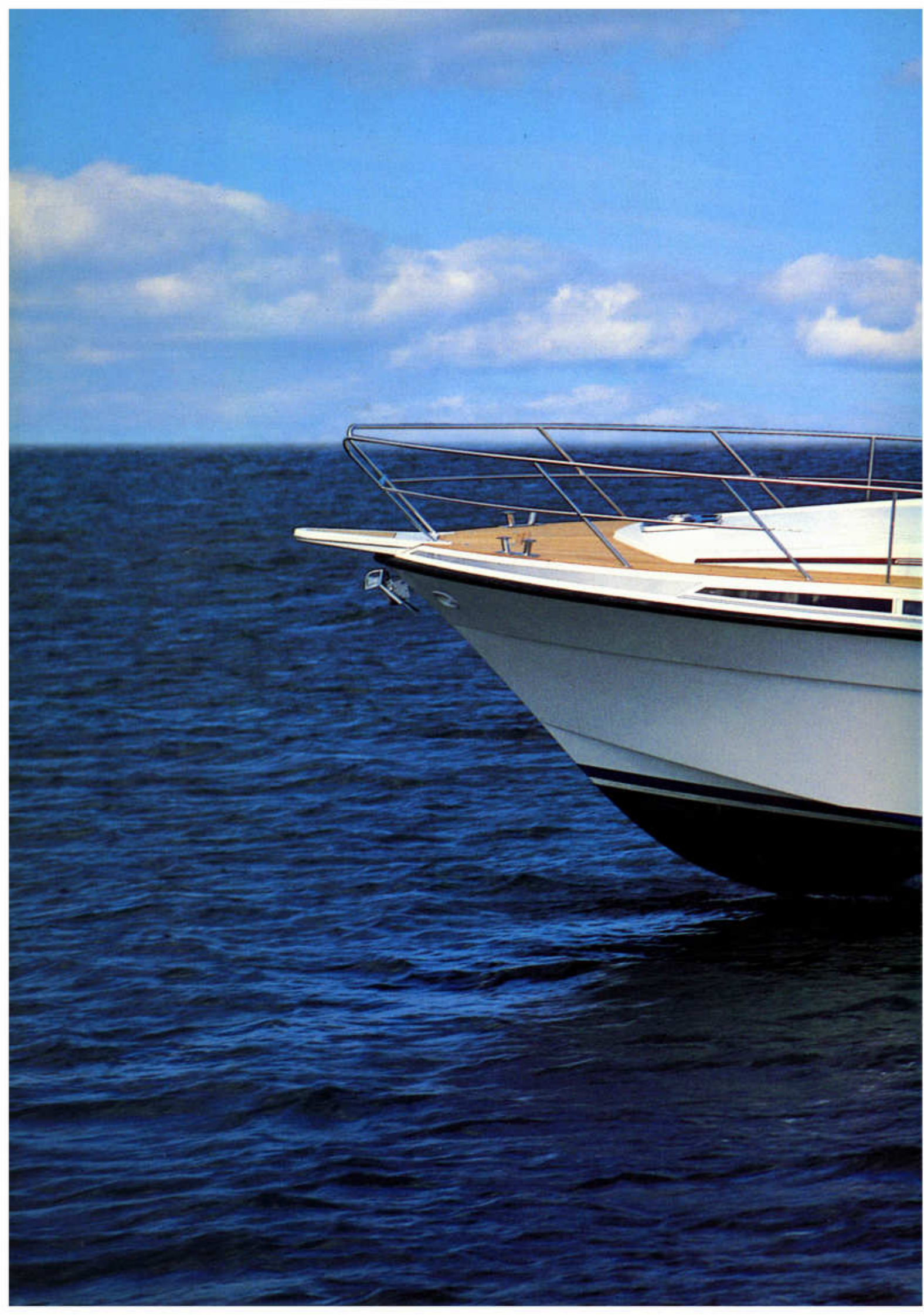
The deck salon of the 470 is light and luxurious for entertaining and relaxing. Warm mahogany cabinetry is highlighted by fabrics and upholstery chosen for texture, color and durability. Plush, quality carpeting is found throughout.

The galley has been planned with considerable thought to the requirements of the sea-going chef with ample stowage space and working surfaces.

Storebro combines ease and dependability of performance, structural integrity and elegant comfort to produce a truly distinctive yacht...well worth the investment. Bringing the excellence to you requires our continued dedication and commitment to uncompromised quality in craftsmanship and materials.

Photographs and words are not adequate – you must step aboard a Royal Cruiser to fully appreciate the Unique Ambiance of Storebro...







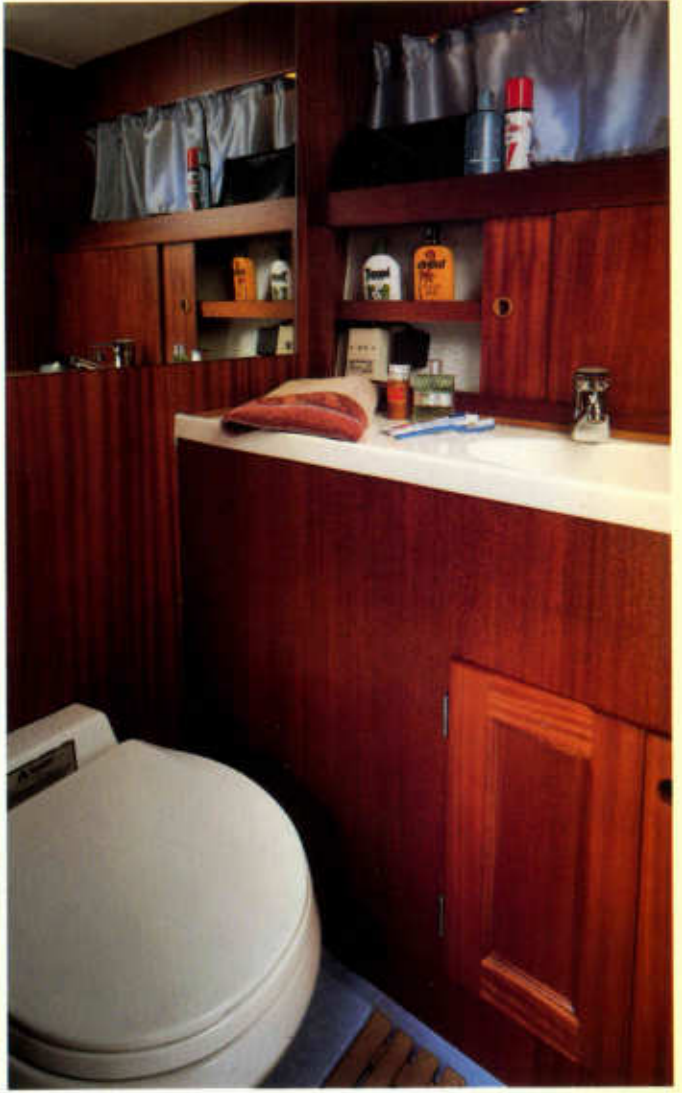


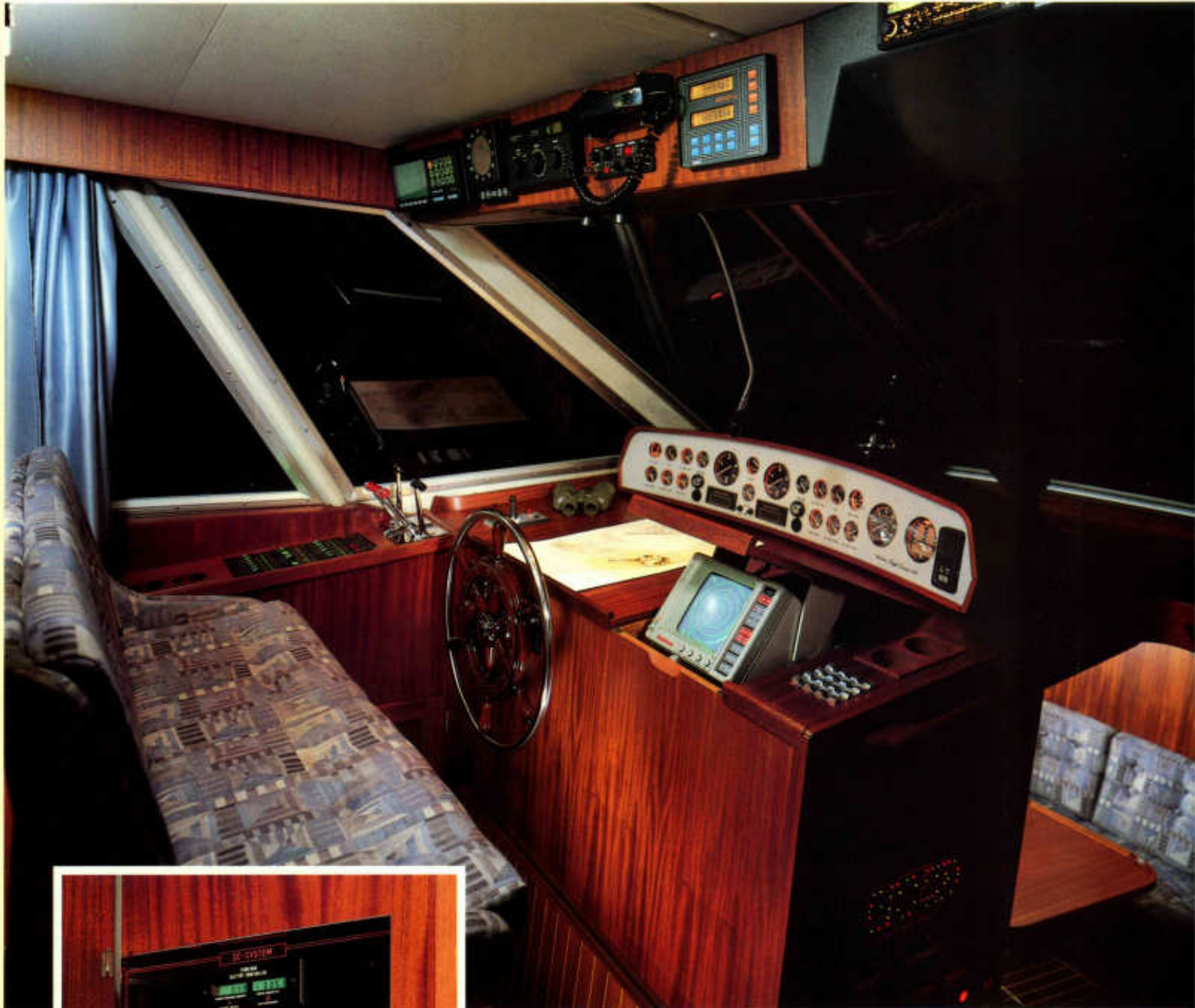












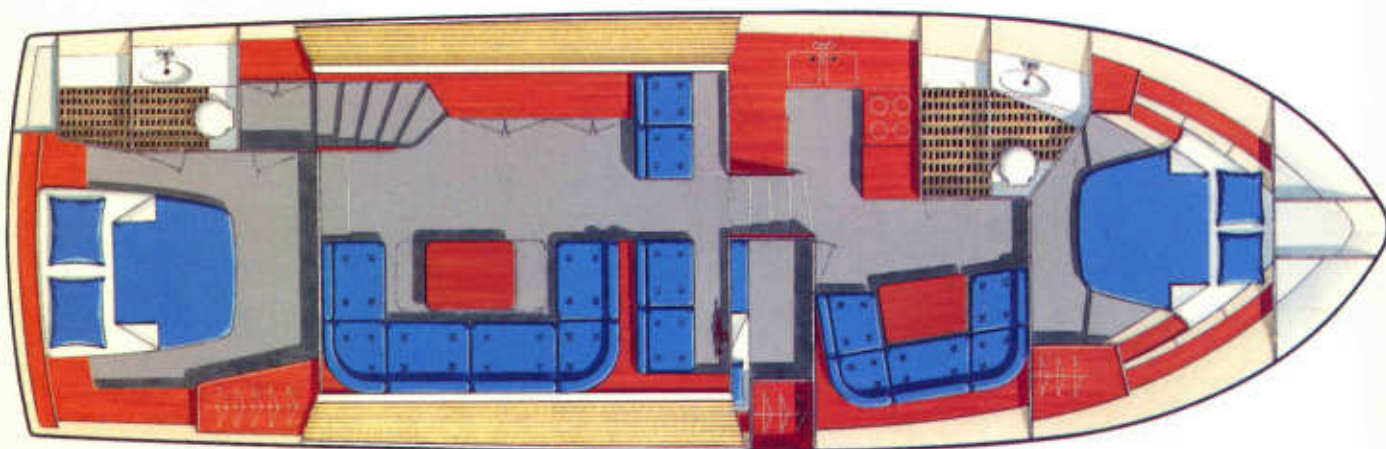








# Storebro Royal Cruiser 470



## Specifications

L.o.a. (exclusive of pulpit and swimming platform)	approx	14.20 m	46'7"
Beam	approx	4.55 m	14'11"
Draft	approx	1.20 m	3'11"
Displacement (without fuel and water)	approx	15.5 tons	32,200 pounds
Fuel capacity	approx	2x1500 l	2x330 imp. gallons 2x396 US gallons
Fresh water capacity	approx	800 l	176 imp. gallons 211 US gallons
Sleeping accommodations		6(8)	
Electrics		24 V	
Batteries			
Engines		170 Ah (24 V)	
Consumption		220 Ah (24 V)	
Engines		Twin Volvo Penta diesels or G&M diesels	



Purveyor to H.M. the King of Sweden

### Hull, Deck, Superstructure and Flying Bridge:

Handlaid glassreinforced plastic. Teak decks available as optional equipment.

### Interior:

Selected mahogany with satin finish varnish.

### STANDARD EQUIPMENT:

#### Deck:

Deck fittings – 3 pairs of mooring bollards – Anchor windlass with catapult – Safety glass throughout – Navigation lights to international standards – Radar mast – TV antenna – Flag pole – Boat hooks – Stainless steel railings with mahogany tops – Handrails – Cover under railing aft – Swimming platform – Shower on transom (hot and cold) – Remote control search light – Cover for instruments on flying bridge – Shore water inlet with reduction valve – Sea water installation – 6 Fenders – 4 Mooring lines – Horn, compressor type – Skylights.

#### Guest cabin (fore):

Queensize berth – Two lockers – Separate entry to forward bathroom – Intercom telephone.

#### Dinette and Galley:

U-shaped sofa with table that can be lowered to form a double berth – Elstove – Micro oven with grill and conventional oven – Refrigerator – Deepfreezer – Dishwasher – Washer with tumble-drier – Extractor fan – Teak floor – Double stainless sinks – Pressurized hot and cold water – Chopping board – Glass and china rack – Glass, china and cutlery for 6 persons – Lockers and Drawers.

#### Toilet room, forward

Wash basin – Hot and cold pressurized water – 110 V shaving point – WC – Mirror – Lockers and shelves – Separate shower-stall.

#### Guestcabin (Midships):

Double berth – Drawers – Wardrobe.

#### Decksalon and Helmsman's position:

Complete engine instrumentation – Ceiling panel for extra instruments – Echosounder – Compass – Sumlog – Autopilot – Chart light – Hour meters – Fuel gauges – Intercom telephone – Burglar alarm – Radio with cassetteplayer and 2 speakers in salon and 2 on flying bridge – Sea water temperature meter – Bar with variety of glasses – Sink – Ice-maker – Pressurized hot and cold water – U-shaped sofa with hi-lo table – Helmsman double seat – Navigator's double seat – Controls for searchlight – Cigaretlighter.

#### Owner's cabin (Aft):

Queensize berth – Wardrobes – Lockers and shelves – Radio with cassette player and 2 speakers – Dressing table with mirror – Fresh water tanks – Intercom telephone.

#### Toilet room, Aft:

Wash basin – Hot and cold pressurized water – 110 V shaving point – WC – Mirror – Locker and shelves – Separate shower stall.

#### Engine room:

Twin engines, flexibly mounted – Fuel filters – Sea water filters – Electric, automatic bilge pumps – Alternators – Fuel tanks – Holding tank – Halon fire extinguisher – Fans – Lubricating oil tank – Generator 6 kW with automatic battery charger, shore power cable, hot water heater.

#### Storage under decks:

Spacious storageroom with entrance under stairs in galley.

#### Deckstorage:

Storage for fenders on side decks port and starboard. Storage for anchor lines etc. on fore and aft decks.

#### Flying Bridge:

L-sofa – Helmsman's sofa – Sun bed – Engine controls – Engine instruments – Log – Compass – Controls for trim tabs – Controls for searchlight – Controls for anchor system – Remote panel for autopilot – Repeater for echosounder – Radarmast – Seat cushions – Sunbed cushions – Cover for instruments – Speakers for stereo – Storage – Glass holders – Intercom telephone.

#### Miscellaneous:

Cushions, curtains and fitted carpets – Interior lights – 220 V outlets throughout – Batteries – Electrohydraulic trimtabs – Automatic bilge pumps – Shore power cable – Heavy duty windshield wipers – 12 V outlets throughout – Windshield washer – Defroster for front windows – Battery monitor – Fire extinguishers.

Some pictures in this brochure may differ from the actual boat, certain extra equipment can appear in the pictures. The manufacturer reserves the right to make alterations without notice.

Builders: AB Storebro Royal Cruiser, Sweden.

Powered by

**VOLVO PENTA**  
diesel



STOREBRO  
*Royal Cruiser*

S-590 83 STOREBRO, SWEDEN — PHONE +46 492 30160 — TELEFAX +46 492 30300 — TELEX 3943 STB S