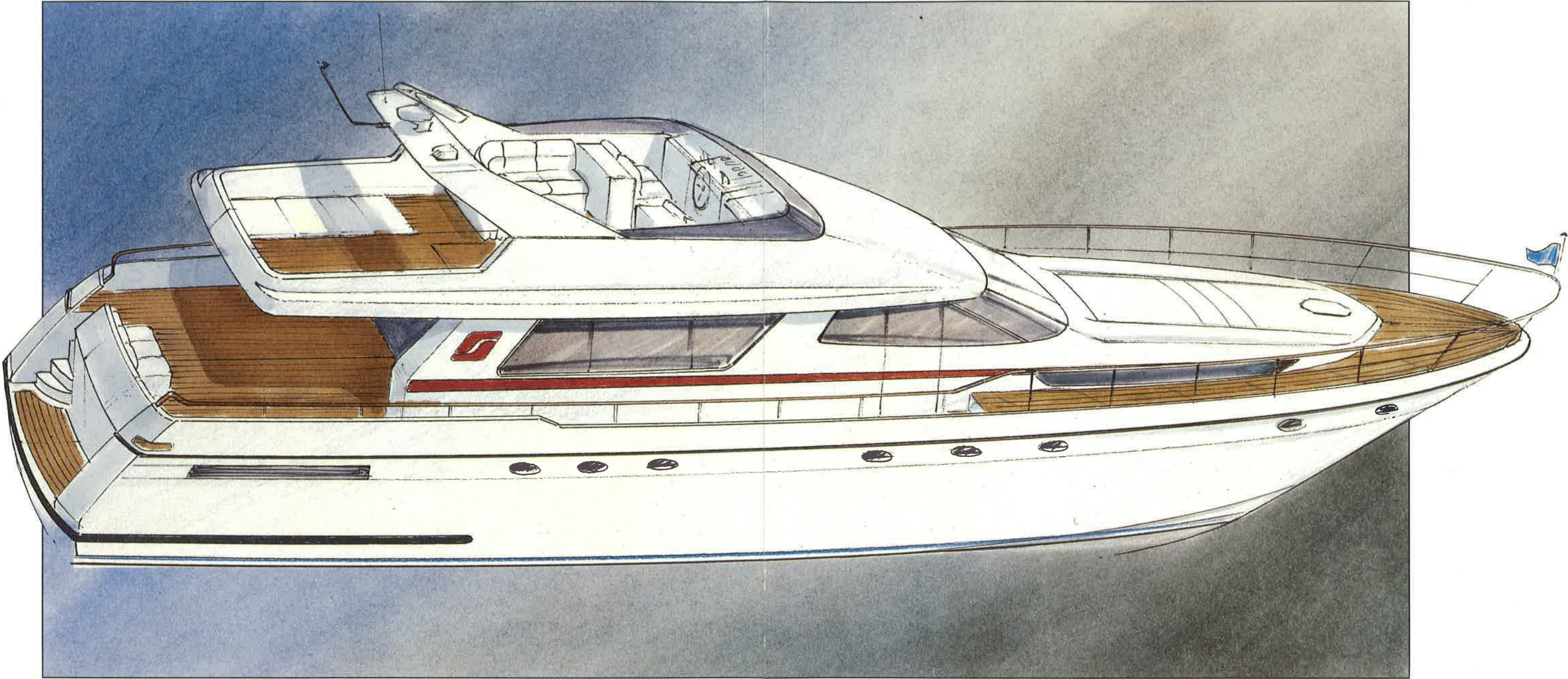


STOREBRO ROYAL CRUISER



730



AB STOREBRO RC · S-590 83 STOREBRO · SWEDEN · PHONE +46 492 30160 · FAX +46 492 30300

PARTNER GRÄNNA 192 E AB BUTEN PRESS LÄHOLM 1992



SPECIFICATIONS

DESIGN:

Storebro/W.H. Wilke/J. Björklund

HULL STRUCTURE

The hull is hand laminated according to NKK-rules, using isofthalic polyester resin and fibre glass.

The side shells have a sandwich form with foam core. Both side shells and bottom are strengthened with fibre glass reinforced plastic stiffeners.

DECK

Hydraulic windlass with up-right capstan
Anchor with 100 m chain
Large hatch with good access to the chain box
Escape hatch from crews quarter and access to storage room
Access to engine room from aft deck
Door to engine room from platform
Large hatches in aft deck for engines
Cushioned sofas and table on aft deck
Door in bulwark aft for steps down to swimming platform
Door in bulwark aft for gangway entrance
Retractable electrohydraulic gangway with teak gratings and handrail
2 capstan winches on aft deck
Hatch which covers fuel and water filling taps
Bow, stern and springline bollards (8)
Freshwater taps (2)
2 Boat hooks
2 Balloon fenders and 8 cylindrical fenders in storage room
Teak planking on deck, stairs to - and on swimming platform
Stainless steel rail and stanchions with teak on toprail aft
Mooring lines
Shower on swimming platform
Liferaft (20 persons) on aft deck

FLYING BRIDGE

Access to flying bridge from saloon
Bridge ladder and hatch from aft deck
Flying bridge windshield
Stainless steel rails and stanchions
Mast (targa type) with TV-, radar-, GPS-, VHF-antennas, signal horn, navigation lights and search lights
Fully autonomous control station with engine instrument, readout, compass, speed indicator, VHF, GPS repeater, rudder angle indicator, engine controls, search light controls, autopilot second station
Cushioned helmsman- and passenger seats
Cushioned U-shaped sofa with table
Bar with sink and water tap
Refrigerator

Teak planking on decks
Flying bridge instrument perspex cover
Flying bridge settee cushion canvas cover
Radio-cassette with 2 speakers

MASTER STATEROOM

Queen-size berth with high quality elastic spring and bed mattresses
Bed spread
Dressing table, chair and mirrors
Large wardrobes
Drawers, lockers (storage under bed)
Mahogany panelling
Vinyl ceiling
Carpet
Portholes with curtains
Night tables

MASTER HEAD

Electric flushing marine toilet
Large washbasin
Mirror and medicine cabinet
Lockers
Shower with automatic drainage to tank
Electrical fan
Corian on counter top
Mahogany panelling
Vinyl ceiling
Corian flooring
Glassdoor to shower cabinet
Portholes with curtains

AFT GUEST CABINS (2)

Twin beds with high quality elastic spring and bed mattresses
Bed spreads
Night table
Wardrobe
Lockers above centreline bed (for suitcases etc.)
Drawers under beds
Mahogany panelling
Vinyl ceiling
Carpet
Portholes with curtains

FORWARD GUEST CABIN

Portholes with curtains
Upper and lower berths, with storage beneath
Beds with high quality spring and bed mattresses
Bed spreads
Wardrobe
Mahogany panelling
Vinyl ceiling
Carpet

GUEST HEADS (3)

Portholes with curtains
Electric flushing marine toilet

Large wash basin
Mirror and medicine cabinet
Lockers
Shower with automatic drainage to tank
Electrical fan
Corian on counter top
Glass door shower basin
Mahogany panelling
Vinyl ceiling
Corian flooring

Special sound insulation between crew quarters/Master Head and crew quarters/forward guest cabin.

CREW QUARTERS (2)

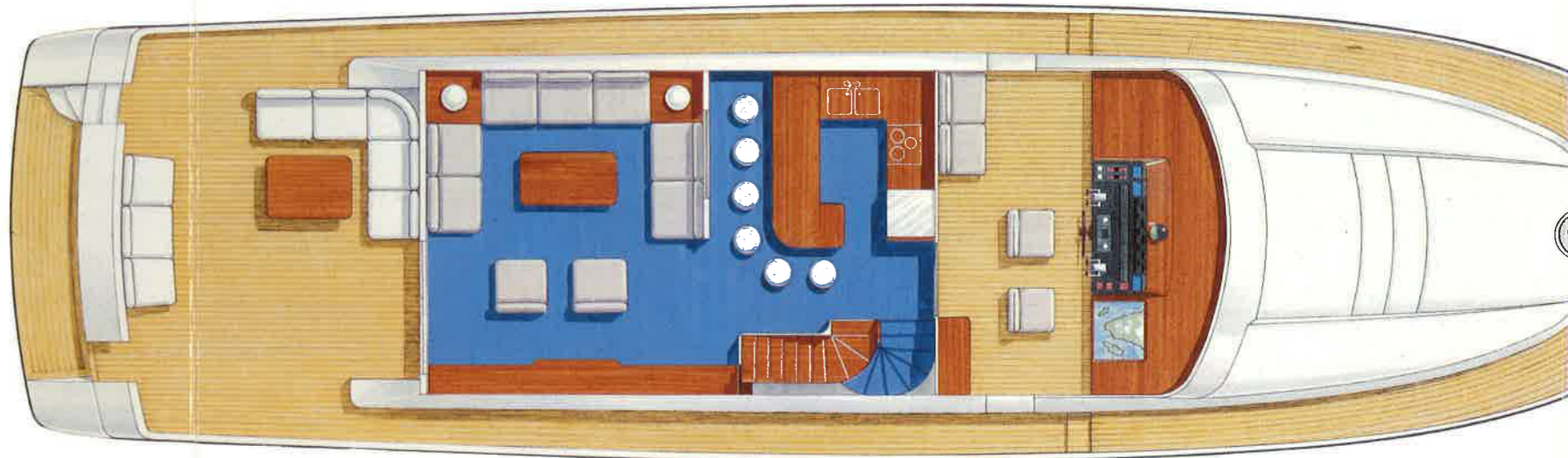
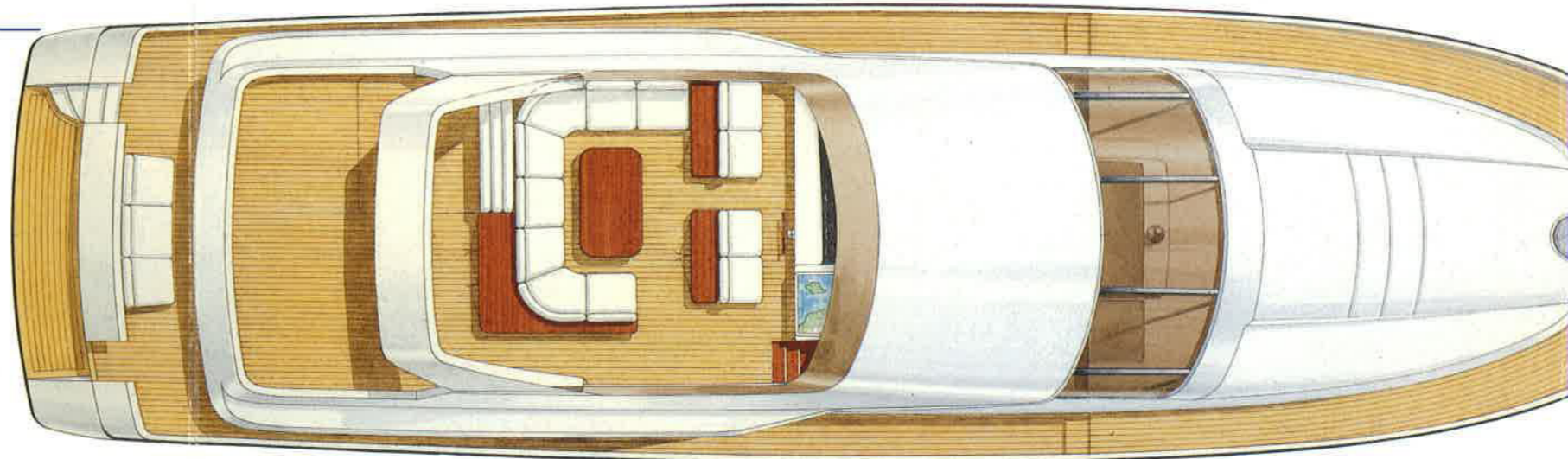
Portholes with curtains
Upper and lower berth with storage beneath
Beds with high quality spring and bed mattresses
Wardrobe
Mahogany panelling
Carpet
Vinyl ceiling

CREWS HEAD

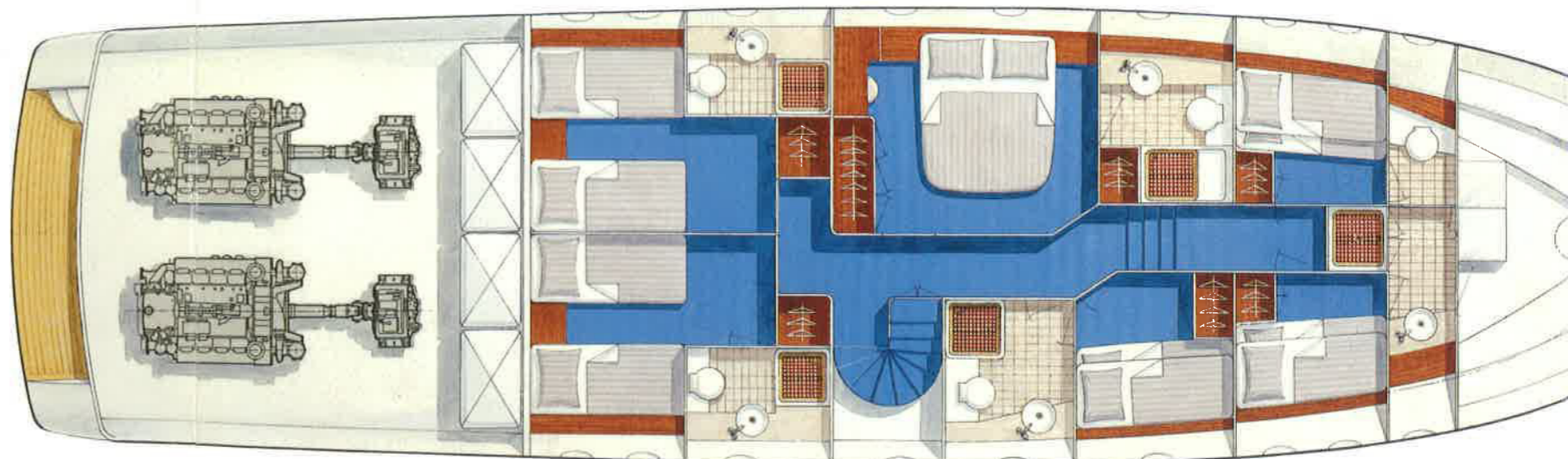
Electric flushing toilet
Large wash basin
Mirror and medicine cabinet
Lockers
Shower with automatic drainage to tank
Electric fan
Corian on counter top
Glassdoor shower basin
Mahogany panelling
Vinyl ceiling
Teak grating
Portholes with curtains

SALOON

One three-seat sofa, two two-seat sofas and two loose seats
Two corner tables with lamps
One Hi-Lo saloon table
Entertainment centre with AM/FM stereo receiver, CD, cassette player and four speakers
Bar with glasses and bottle racks
TV Video
Drawers and lockers
Indirect and cornice lighting
Sliding glass door to aft deck
Curtains
Electrical blinds for side windows
Vinyl ceiling
Carpet
Mahogany panelling



Alternative interior layouts available.



S P E C I F I C A T I O N S

GALLEY

Icemaker
 Big refrigerator with freezer 24 V
 Freezer, electric ceramic stove, microwave oven, oven, pantry fan, dishwasher, waste compactor
 Stainless steel double sink with fresh water mixer
 Lockers, shelves and drawers
 Glass, china and cutlery
 Corian on counter tops
 Mahogany frame on bar counter top
 Coto inlaid teak flooring

PILOT HOUSE

Vinyl ceiling
 Helmsman and navigator seats
 Two passenger seats
 Sliding door to galley/saloon
 Two doors (one each side) to deck
 Coto inlaid teak flooring
 Large chart table
 Chart lockers
 Instrument console
 Engine controls and full engine instrumentation (see below)
 Gyro compass
 Distribution panel for 240 V and 24 V

ENGINE INSTRUMENT IN ENGINE ROOM

Mechanical tachometer
 Engine start/stop switches
 Engine oil pressure
 Engine temperature gauge
 Warning lights

INSTRUMENT PANEL IN WHEEL HOUSE

Tachometers, gauges for engine temperature, oil pressure, exhaust temperature, gear box oil pressure
 Engine alarm with test switch
 Engine hour meter
 Warning light for alternator malfunction
 Voltmeter
 Four lights for high bilge water warning system
 Controls for washer/wiper, horns, defroster, search lights, windlass, bow-thruster
 Controls for navigation lights, anchorlight and NUC-light
 Control for trimtabs
 Engine controls
 Fuel and freshwater gauges

ELECTRONICS

VHF with second station on F/B
 Depth sounder (colour)
 Autopilot with second station on F/B
 Radar
 Speed log with repeater on F/B
 GPS with second station on F/B
 Electronic chart plotter
 Internal telephone system connecting cabins, saloon, F/B, galley, wheel house
 Stereo-cassette player and two speakers in each cabin
 TV in each cabin

ELECTRICAL SYSTEM 24 V DC

One 220 Ah starting battery group
 Two service battery groups á 220 Ah
 one 220 Ah navigational battery group
 Belt driven alternator on each main engine
 Three battery chargers (aut.) 75 Amps/each
 Lighting throughout the boat
 Emergency lighting

ELECTRICAL SYSTEM 220 V, 50 HZ

Two generators 20 kW each
 Distribution panel with voltmeter, Ampmeter, circuit breaker, frequency meter and battery monitoring
 Two shore connections for services

BILGE SYSTEM

Four bilge areas each with a 24 Volt pump with automatic float switch connected to panel in wheel house with high bilge water warning lamps
 Centralised bilge pump system (in engine room) with 220 V AC high capacity pump parallel with hand pump for 4 bilge areas connected via a manifold
 Materials used is pipes without welding, no return valves and ball valves in manifold

FRESH WATER SYSTEM

Two independent fresh water systems each with cold and hot water
 Two 24 Volt DC pumps with pressure tanks
 Two 220 Volt AC water heaters 80 l. capacity each
 Taps for pressure water in all heads, galley, F/B-bar, deck and transom shower
 Fresh water tap in engine room for refill of engines and generator
 Materials used in FW-lines is steel pipes without welding, approved for drinking water
 Freshwater purifier

SEA WATER SYSTEM

24 Volt DC electrical deck wash pump with tap on fore deck and fixed automatic washer for anchor chain

MISCELLANEOUS

Air conditioning 80 000 BTU
 Hydraulic system for anchor windlass and bowthruster
 Copper tubing and high pressure connections in hydraulic system
 Hydraulic servo assisted steering with two steering positions and copper pipes
 El. hydraulic trimtabs
 Remote controlled cut off fuel tank-valves and engine room air intakes
 Central vacuum cleaner
 Laundry machine with tumble dryer

TANKS

The main fuel tanks in G.R.P. are installed in forward end of engine room
 The fresh water tank in G.R.P. is integrated with hull between bottom frames and bottom centre girders
 The grey water tank (1500 l) in G.R.P. is integrated with hull between bottom frames forward of fresh water tank and between bottom centre girders
 The black water tank (500 l) in G.R.P. is integrated with hull between bottom frames forward of grey water tank between bottom centre girders
 Between tanks there are cofferdams
 Black and grey water tanks are fitted with one electrical 24 V and one hand discharge pump in parallel
 Hydraulic oil tank in stainless steel situated in engine room
 All tanks are fitted with monitoring systems, and inspection hatch

ENGINE ROOM

Main engines 2 x MAN 2842 diesels
 Gearbox 2 x ZF V-drive
 Steering gear
 Inspection light
 Mufflers
 Racor Fuel filters, two in parallel per engine
 Water strainers
 Aluminium flooring
 Sound insulation
 Engine room ventilation, air extractors, air blowers
 Water tight door in transom
 Working bench
 Tools
 Air inlets with water drainage

FIRE FIGHTING SYSTEM

According to classification rules

MAIN CHARACTERISTICS SRC 730

Length overall	22.20 m
Length waterline	19.50 m
Beam	5.90 m
Draft	1.70 m
Fuel tank capacity	8.000 l
Fresh water capacity	2.500 l
Displacement empty/fully loaded	40/50 tonnes
Freeboard	forward 2.05 aft 1.80
Standard engines	2 × MAN 2842 LZE diesels 1100 HP each with ZF V-drive
Speed max	26 knots
Range at 20 knots	500 Nm

We have been building boats for almost half a century. Boats with elegance, comfort and seaworthiness far above the ordinary.

Every single STOREBRO ROYAL CRUISER is a unique piece of craftsmanship, created as part of a boat-building tradition reaching back to the classical lines of the wooden boats of yesteryear.

Our genuine, old-fashioned craftsmanship goes hand in hand with the best that modern technology can offer — advanced computerized systems for hull design, woodworking and interior design.

Every component, every system and every piece of material is carefully selected to work in perfect coordination. Building boats in this way takes time and patience, a feeling for materials and methods and respect for one's work. But it is the only way we know.

