

---

STOREBRO ROYAL CRUISER



---

730

---

  
STOREBRO  
*Royal Cruiser*

*The Storebro Royal Cruiser 730 is an expression of modern technology harmoniously wedded to genuine, traditional craftsmanship. An exclusive Swedish design orchestrating light, space and a whole ensemble of elegant, practical features into a sophisticated celebration of life afloat.*



*The Storebro Royal Cruiser 730 is crafted to satisfy the highest standards, from seaworthiness and safety to performance and comfort.*



*It brings new meaning to adventure, freedom and beauty, magically transforming ideas into the dimension of reality.*



*The Storebro Royal Cruiser 730. Now, and for all your tomorrows* 





*W e l c o m e*



*o n b o a r d*







*The roomy and beautifully arranged flying-bridge is typical of the many superb design solutions on board the SRC 730. The whole vessel is packed with practical ideas to bring added convenience and comfort to life afloat.*



*Exclusive woodwork is a hallmark of Storebro Royal Cruisers. This is especially noticeable in the way the beautifully finished woodwork of the helmsman's position is exquisitely co-ordinated with the sophisticated technical equipment.*







*The saloon, with its galley and bar-top counter, is just one of the many exciting, yet functional, features of the SRC 730.*





*The roomy, well thought-out owner's cabin has a comfortable queen-size bed with a genuine spiral spring mattress. The cabin affords direct access to a tiled bathroom with bath, shower and toilet.*







*Guests can enjoy the comfort of well equipped two-bed cabins, with each cabin connected to a toilet/shower stall.*





**DESIGN:**

Storebro/W.H. Wilke/J. Björklund

**HULL STRUCTURE**

The hull is hand laminated, using isofthalic polyester resin and fibre glass.

The side shells have a sandwich form with foam core. Both side shells and bottom are strengthened with fibre glass reinforced plastic stiffeners.

**DECK**

- Hydraulic windlass
- Anchor with 100 m chain
- Escape hatch from crews quarter and access to storage room
- Access to engine room from aft deck
- Door to engine room from swimming platform
- Cushioned sofas with table on aft deck
- Doors in bulwark aft for steps down to swimming platform and for gangway entrance
- Retractable electrohydraulic gangway with teak gratings and handrail
- 2 capstan winches on aft deck
- Bow, stern and springline bollards (8)
- Freshwater taps ( 2 )
- 2 Boat hooks



**Main characteristics**

Length overall	22.20 m – 72'10"
Beam	5.90 m – 19'2"
Draft	1.70 m – 5'7"
Fuel tank capacity	8.000 l, 1760 imp. gall, 2100 US gall.
Fresh water tank capacity	2.500 l, 550 imp. gall, 660 US gall.
Grey water tank capacity	1.500 l, 330 imp. gall, 396 US gall.
Black water tank capacity	500 l, 110 imp. gall, 132 US gall.
Displacement empty	43 tonnes
Displacement fully loaded	53 tonnes
Standard engines	2 x MAN 2842 LZE diesels 1100 HP each with ZF V-drive
Speed max	26 knots
Range at 20 knots	500 Nm

- 2 Balloon fenders and 8 cylindrical fenders
- Teak planking on deck, stairs to - and on swimming platform
- Stainless steel rail and stanchions
- Mooring lines
- Shower on swimming platform

**FLYING BRIDGE**

- Access to flying bridge from saloon
- Bridge ladder and hatch from aft deck
- Flying bridge windshield
- Stainless steel rails and stanchions
- Mast with TV-, radar-, GPS-, VHF-antennas, signal horn, navigation lights and search lights
- Fully autonomous control station with engine instrument,

- readout, compass, speed indicator, VHF, GPS repeater, rudder angle indicator, engine controls, search light controls, autopilot second station
- Cushioned helmsman- and passenger seats
- Cushioned U-shaped sofa with table
- Bar with sink and water tap
- Refrigerator
- Teak planking on decks
- Flying bridge settee cushion canvas cover
- Radio-cassette player with 2 speakers

**MASTER STATEROOM**

- Queen-size berth with high quality elastic spring and bed mattresses

- Bed spread, night tables
- Dressing table, chair and mirrors
- Large wardrobes
- Drawers, lockers (storage under bed)
- Mahogany panelling
- Carpet
- Portholes with curtains

**MASTER HEAD**

- Portholes with curtains
- Electric flushing marine toilet
- Large washbasin
- Mirror and medicine cabinet
- Lockers
- Bath tub and shower with automatic drainage to tank
- Electrical fan
- Corian on counter top
- Mahogany panelling
- Corian flooring

**GUEST CABINS**

- Beds with high quality elastic spring and bed mattresses
- Bed spreads
- Night table
- Wardrobe
- Drawers under beds
- Mahogany panelling
- Carpet
- Portholes with curtains

**GUEST HEADS**

- Portholes with curtains
- Electric flushing marine toilet
- Large wash basin
- Mirror and medicine cabinet
- Lockers
- Shower with automatic drainage to tank
- Electrical fan
- Corian on counter top
- Corian flooring

**CREW QUARTERS**

Portholes with curtains  
Berths with storage beneath  
High quality spring and bed mattresses  
Wardrobe  
Mahogany panelling  
Carpet

**CREWS HEAD**

Electric flushing toilet  
Wash basin  
Shower with automatic drainage to tank  
Electric fan

**SALOON**

Sofas with Hi-Lo table  
Entertainment centre with AM/FM stereo receiver, CD, cassette player and four speakers  
Bar with glasses and bottle racks  
TV / Video  
Drawers and lockers  
Indirect and corniche lighting  
Sliding glass door to aft deck  
Curtains  
Carpet  
Mahogany panelling

**GALLEY**

Refrigerator, freezer, electric ceramic stove, microwave oven, oven, pantry fan, dishwasher, icemaker  
Stainless steel double sink with fresh water mixer  
Lockers, shelves and drawers  
Glass, china and cutlery  
Corian on counter tops  
Coto inlayed teak flooring

**PILOT HOUSE**

Helmsman and navigator seats  
Two passenger seats  
Sliding door to saloon  
Two doors (one each side) to deck  
Coto inlayed teak flooring  
Large chart table, chart lockers  
Instrument console  
Engine controls and instruments  
Distribution panel for 240 V and 24 V

**ENGINE INSTRUMENT IN ENGINE ROOM**

Mechanical tachometer  
Engine start/stop switches  
Engine oil pressure  
Engine temperature gauge

**INSTRUMENT PANEL IN WHEEL HOUSE**

Tachometers, gauges for engine temperature, oil pressure, exhaust temperature, gear box oil pressure  
Engine hour meter, voltmeter  
Warning light for alternator malfunction  
Three lights for high bilge water warning system  
Controls for washer/wiper, horns, defroster, search lights, windlass, bowthruster  
Controls for navigation lights, anchorlight and NUC-light  
Control for trintabs, engine controls  
Fuel and freshwater gauges.  
Gyro compass



**ELECTRONICS**

VHF with second station on Flying Bridge  
Depth sounder (colour)  
Autopilot with second station on Flying bridge  
Radar  
GPS with second station on Flying Bridge  
Electronic chart plotter  
Internal telephone system connecting cabins, saloon, Flying bridge, galley, wheel house  
Stereo-cassette player and two speakers in each cabin  
TV in Owner's cabin

**ELECTRICAL SYSTEM 24V DC**

One 220 Ah starting battery group  
Two service battery groups à 220 Ah  
One 220 Ah navigational battery group  
Belt driven alternator on each main engine  
Two battery chargers (aut.)  
One 100 Amps and one 75 Amps  
Lighting throughout the boat  
Emergency lighting

**ELECTRICAL SYSTEM 220V, 50Hz**

Two generators 20 kW each  
Distribution panel with voltmeter, ampmeter, circuit

breaker, frequency meter and battery monitoring  
Two shore connections for services

**BILGE SYSTEM**

Six bilge areas each with a 24 Volt pump with automatic float switch  
Centralised bilge pump system (in engine room) with 220 V AC high capacity pump for 5 bilge areas connected via a manifold

**FRESH WATER SYSTEM**

Two independent fresh water systems each with cold and hot water  
Two 24 Volt DC pumps with pressure tanks  
Two 220 Volt AC water heaters 80 l. capacity each  
Taps for pressure water in all heads, galley, Flying bridge bar, deck and transom shower  
Fresh water tap in engine room for refill of engines and generator

**SEA WATER SYSTEM**

24 Volt DC electrical deck wash pump with tap on fore deck and fixed automatic washer for anchor chain

**MISCELLANEOUS**

Air conditioning 80 000 BTU  
Hydraulic system for anchor windlass and bowthruster  
Hydraulic steering with two steering positions and copper pipes  
El. trintabs  
Remote controlled cut off fuel tank-valves and engine room air intakes  
Central vacuum cleaner  
Laundry machine with tumble dryer

**TANKS**

The main fuel tanks in stainless steel are installed in forward end of engine room  
The fresh water tank in G.R.P. is integrated with hull between bottom frames and bottom centre girders  
The grey water tank in G.R.P. is integrated with hull between bottom frames forward of fresh water tank and between bottom centre girders  
The black water tank in G.R.P. is integrated with hull between bottom frames forward of grey water tank between bottom centre girders  
Between tanks there are coffer-damms

Black and grey water tanks are each fitted with one electrical 220 V and one hand discharge pump in parallel  
Hydraulic oil tank in stainless steel situated in engine room  
All tanks are fitted with monitoring systems, and inspection hatch



**ENGINE ROOM**

Main engines 2 x MAN 2842 diesels  
Gearbox 2 x ZF V-drive  
Steering gear  
Inspection light  
Mufflers  
Racor Fuel filters, two in parallel per engine  
Water strainers  
Aluminium flooring  
Sound insulation  
Engine room ventilation, air blowers  
Water tight door in transom  
Tools  
Air inlets with water drainage



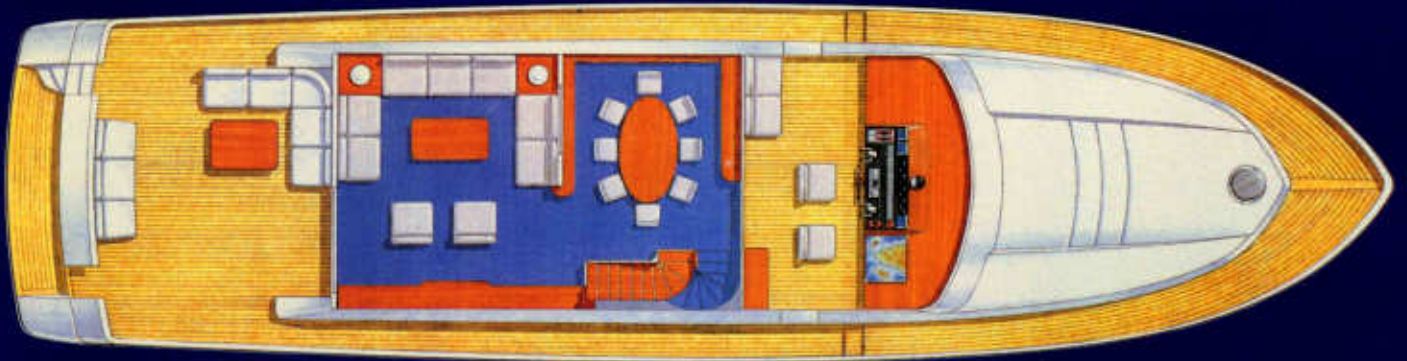
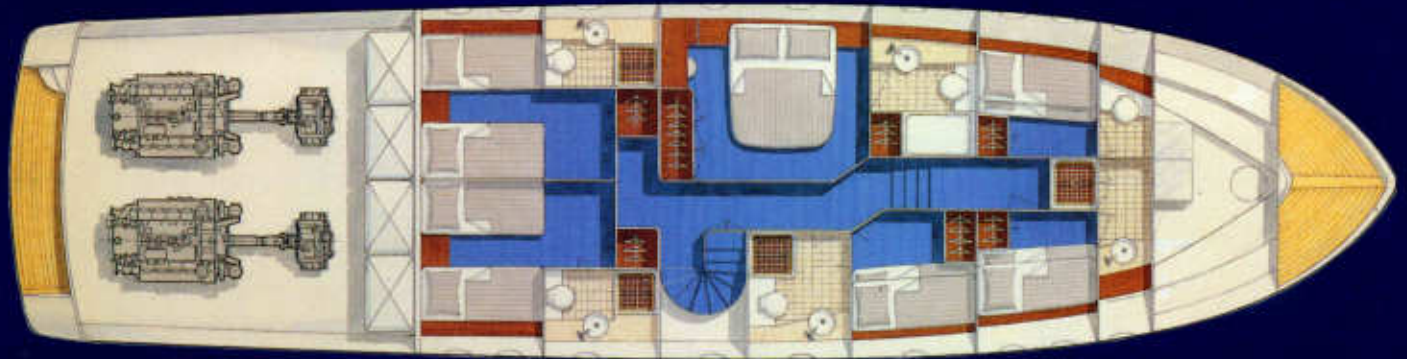
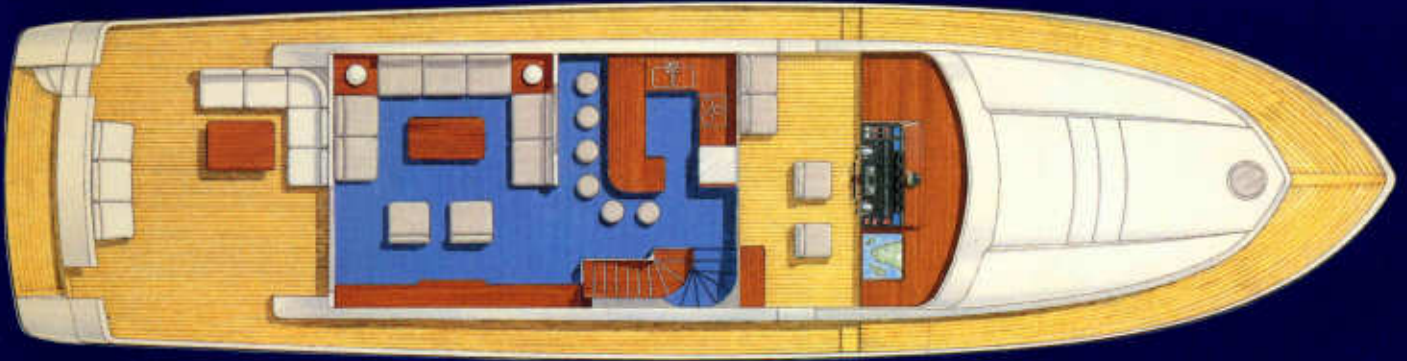
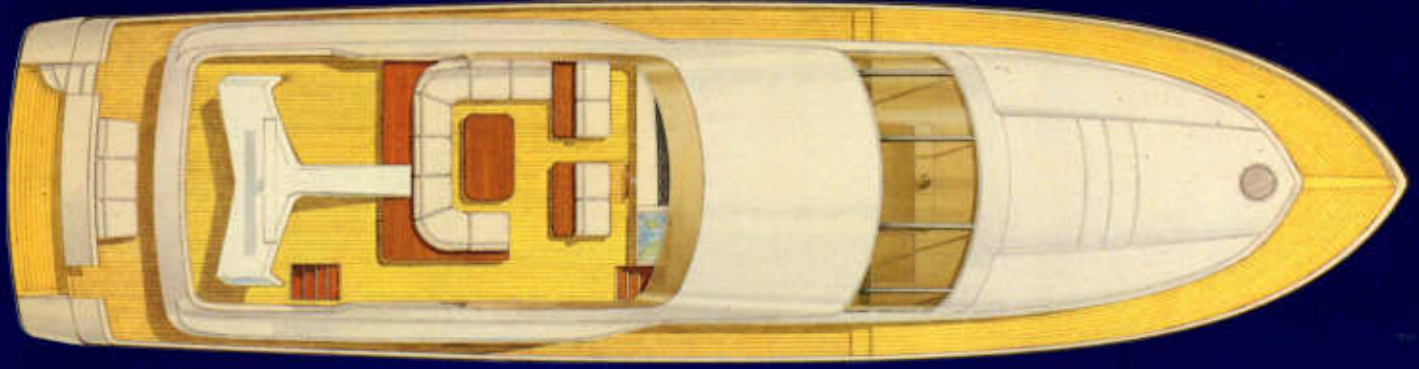
Certain extra equipment may appear in the pictures.

The manufacturer reserves the right to make alterations without prior notice.

**Production:**  
LGNFE Co Communication AB  
**Photographers:**  
M. Alborgbetti/Yacht Première,  
Per Svensson

**Builders:**  
AB Storebro Royal Cruiser,  
Storebro, Sweden.

*SRC 730 Alternative layouts*





**STOREBRO**  
*Royal Cruiser*



AB STOREBRO ROYAL CRUISER · S-590 83 STOREBRO · SWEDEN · PHONE +46 492 19500 · FAX +46 492 30300

---