

*The* STOREBRO ROYAL CRUISERS





*A Storebro boat has evolved through generations of boat-building experience. Genuine craftsmanship is combined with new technology, new materials and methods. A way of working which produces boats with exceptional qualities and lasting value.*

The distinctive feature and hallmark of Storebro boats is, above all, the exquisitely beautiful furnishings. The interplay of velvet-smooth wood with colour-matched fabrics, in tastefully-designed interiors. Everything a perfect fit, and with a finish far above the everyday. Detail work and choice of materials, not just to please the eye, but to ensure a long life.

A Storebro boat is very well-equipped in its standard form. Cabins, galley and saloon are furnished and equipped to the highest levels of comfort and efficiency. The berths, for example, have real sprung mattresses with coil springs protected from



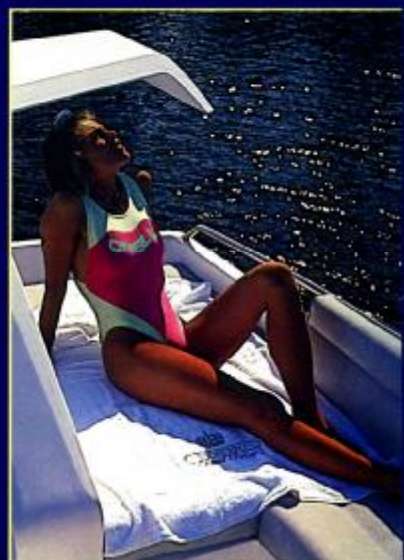
corrosion, while the galley is equipped with everything required for a comfortable life aboard.

Our hulls are built with the same uncompromising care. Every hull is laid up by hand, and we use only isophthalic resins to avoid any problem with osmosis. Manufacturing is carried out in accordance with ISO 9000, and in modern plants, where the environment can be controlled to provide the best possible production conditions.

Engine compartments, equipment, instrumentation, yes, everything onboard, is selected and installed with a professional pride which will not permit any short-cuts. We carry out constant and extensive quality controls, in line with a carefully-worked out system.

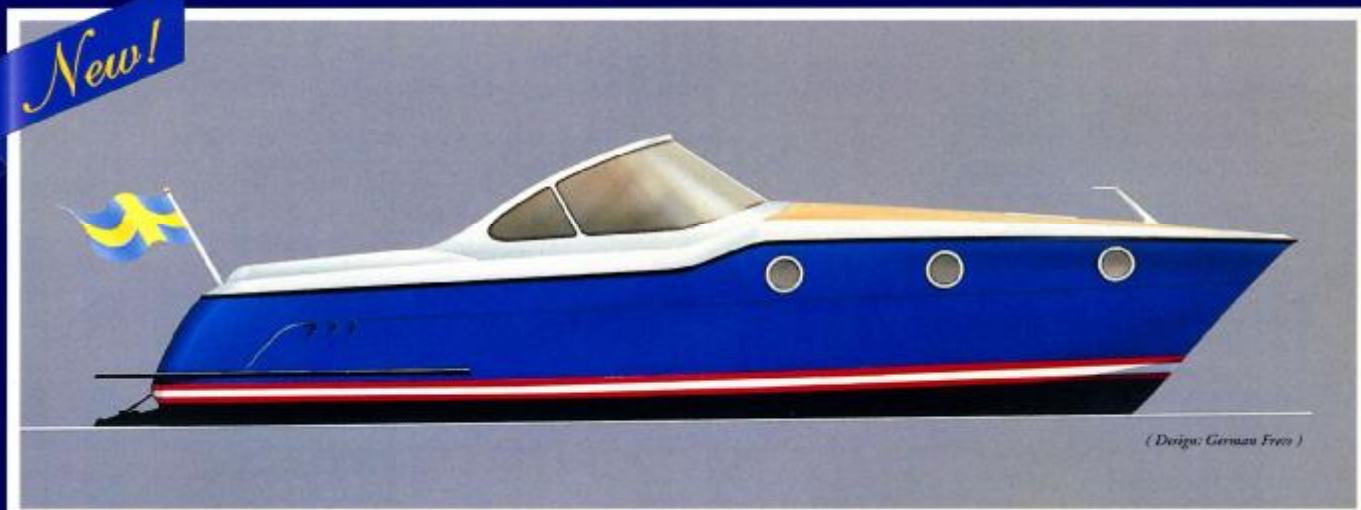
All to guarantee maximum seaworthiness, safety and comfort.

Storebro – boats with unique qualities and exclusive added value.





*New!*



(Design: German Fretz)

### STOREBRO RC 320

*In spring 1997 we will be presenting the Storebro RC 320. A completely new boat which takes its inspiration from our classic wooden boats of the Fifties and Sixties. An exclusive and generously-equipped weekender, with an elegant exterior and well-planned interior.*

*The large and inviting aft deck is on a single level. It offers ample seating, a fridge, sink and a selection of other amenities. The boat has a cockpit-cover with full standing headroom. In a few simple operations, the cover can be folded*

*away into the stern and the upper edge of the windscreen.*

*The Storebro RC 320 offers a great deal of choice in internal timbers and textiles, hull-colour and transmission – we can offer a water-jet for quiet, vibration-free smooth power, shallow-draught, minimal surging and the least possible effect on the environment. An option which builds on the experience we gained in the production of the new SRC 90 E special task boat for the Royal Swedish Navy.*

*New!*



(Design: W. H. Wilke)

### STOREBRO RC 430 BISCAY

*The Storebro RC 340 Biscay is another new development for the Spring. A very exclusive craft with soft, flowing lines and exceptionally generous space onboard. Forward, she has a large owner's stateroom, and a guest cabin with two single berths. Both cabins have their own shower and heads. The roomy saloon and aft deck are on a single level, which provides plenty of space for hospitality and pleasant socialising. The flying bridge also offers more than ample room.*

*The new interior fit-out has been executed in classic Storebro style, with velvet-smooth wood, including a lighter mahogany than in previous Storebro boats. The standard is exceptionally high, and the boat is delivered with a very full inventory.*

*The Storebro RC 430 Biscay satisfies the very highest requirements for convenience, safety and comfort.*



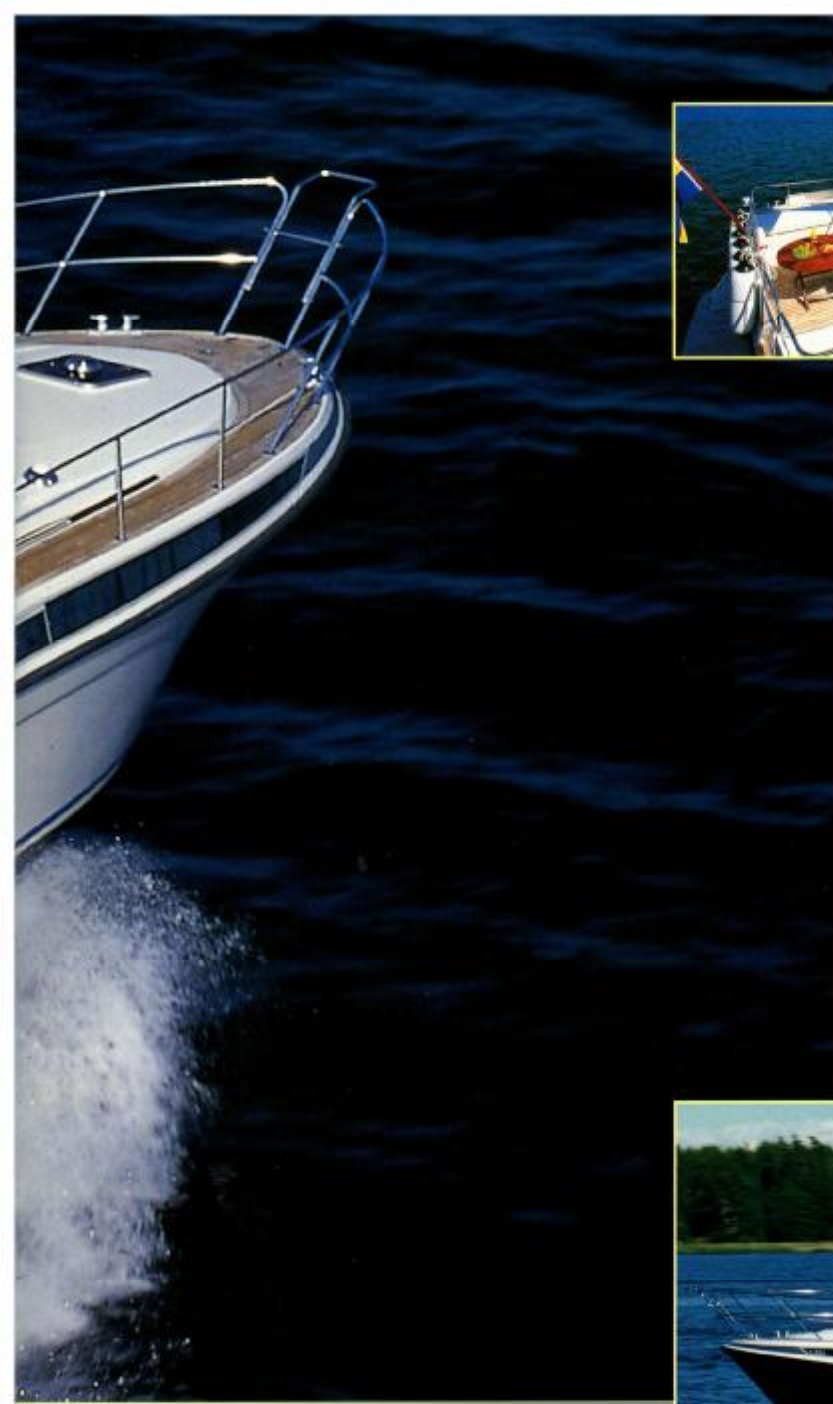


*The interior is planned to make the best use of the space available, as here in the airy saloon, where, for example, the helmsman's seat can be lowered and turned towards the sofa.*



*The large window in the stern creates a light and cosy atmosphere in the aft cabin.*





THE STOREBRO RC 355 BALTIC is a compact family boat for those who spend a great deal of time at sea, and are looking for a comfortable life-style on board. In addition to the trad-

itional cabin forward, she has a roomy aft cabin with two single bunks and a large window in the stern providing a feeling of light and space. Both sleeping cabins have their own showers/heads.

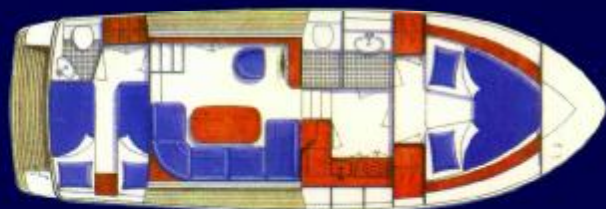
The interior provides a well-equipped galley and a spacious saloon with Storebro's classic and elegant furnishing, utilising beautiful woods and exclusive textiles.

The Storebro RC 355 can be supplied with or without a flying bridge, with a choice of engines, and in a special canal/river version – the Storebro RC 355 Canal.



*For Storebro's 50th anniversary (1996) we introduced an Anniversary version of the Storebro RC 355.*

*A boat with a beautiful blue hull and a special interior in the classic style.*







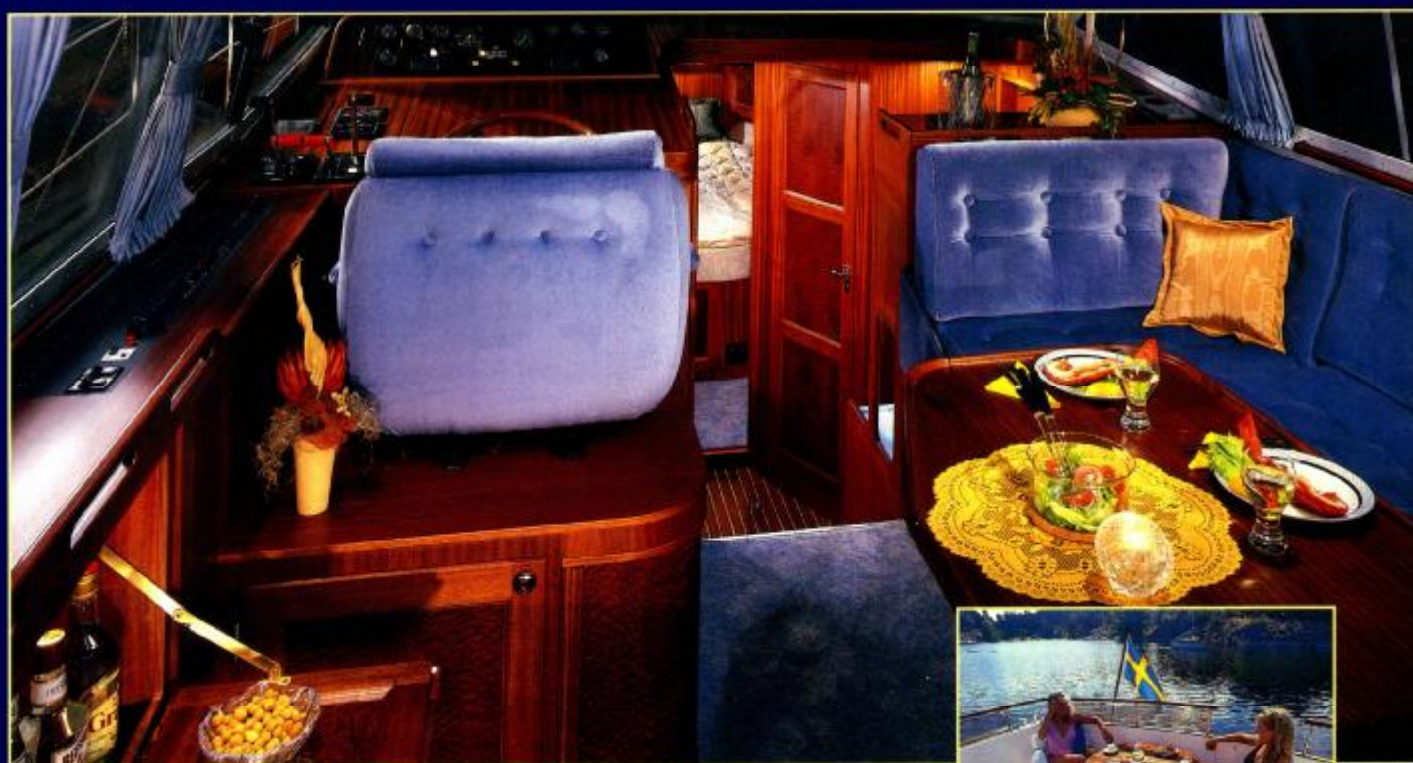
THE STOREBRO RC 380 BISCAY is a very well-planned 38 footer with generous room aboard. Large owner's state-room forward, with double berth, shower and heads, as well as a guest cabin with double berth, or alternatively a dinette, amidships. The practical galley is equipped with everything needed for a comfortable life on board.

The spacious and elegantly-furnished saloon provides plenty of room for entertaining. The saloon and aft deck are on the same level, only separated by a panoramic glass bulkhead with sliding door.

On the flying bridge there is a complete control position, and space for both sunbathing and entertaining.







*The saloon has a number of practical details, such as an inset drinks locker and a TV locker. The forward part of the U-shaped sofa can be turned round to form a wide navigator's seat.*



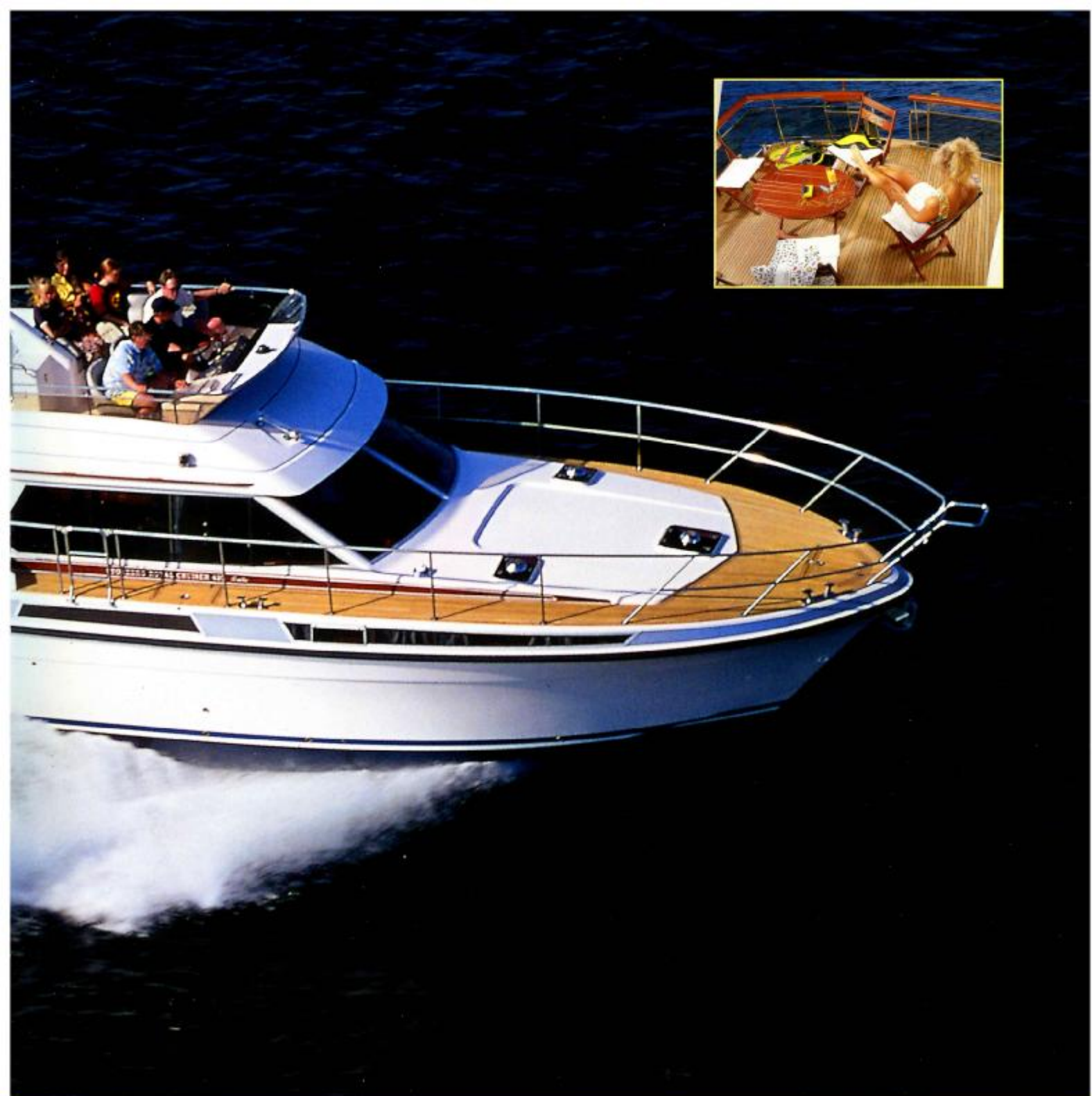


*The good-sized, efficient and well-planned galley has, as standard, durable work-surfaces in light, easy-care Corian.*

*The large and airy saloon has plenty of room for everyday socialising and for special occasions.*







THE STOREBRO ROYAL CRUISER 420 BALTIC is fitted-out with two well-planned sleeping cabins – a large forepeak and a roomy aft cabin. Both with double berths and proper sprung-mattresses, showers/heads and hanging lockers. For owners who require more sleeping accommodation, there is an alternative lay-out with the midships dinette replaced by a two-berth guest cabin.

The raised afterdeck provides close contact with the flying bridge. There is a convenient bathing platform in the stern.

The Storebro RC 420 Baltic is both spacious and comfortable, with all Storebro's well-known attributes – beautiful, elegant woodwork and a wealth of practical details in a cosy and pleasant atmosphere.





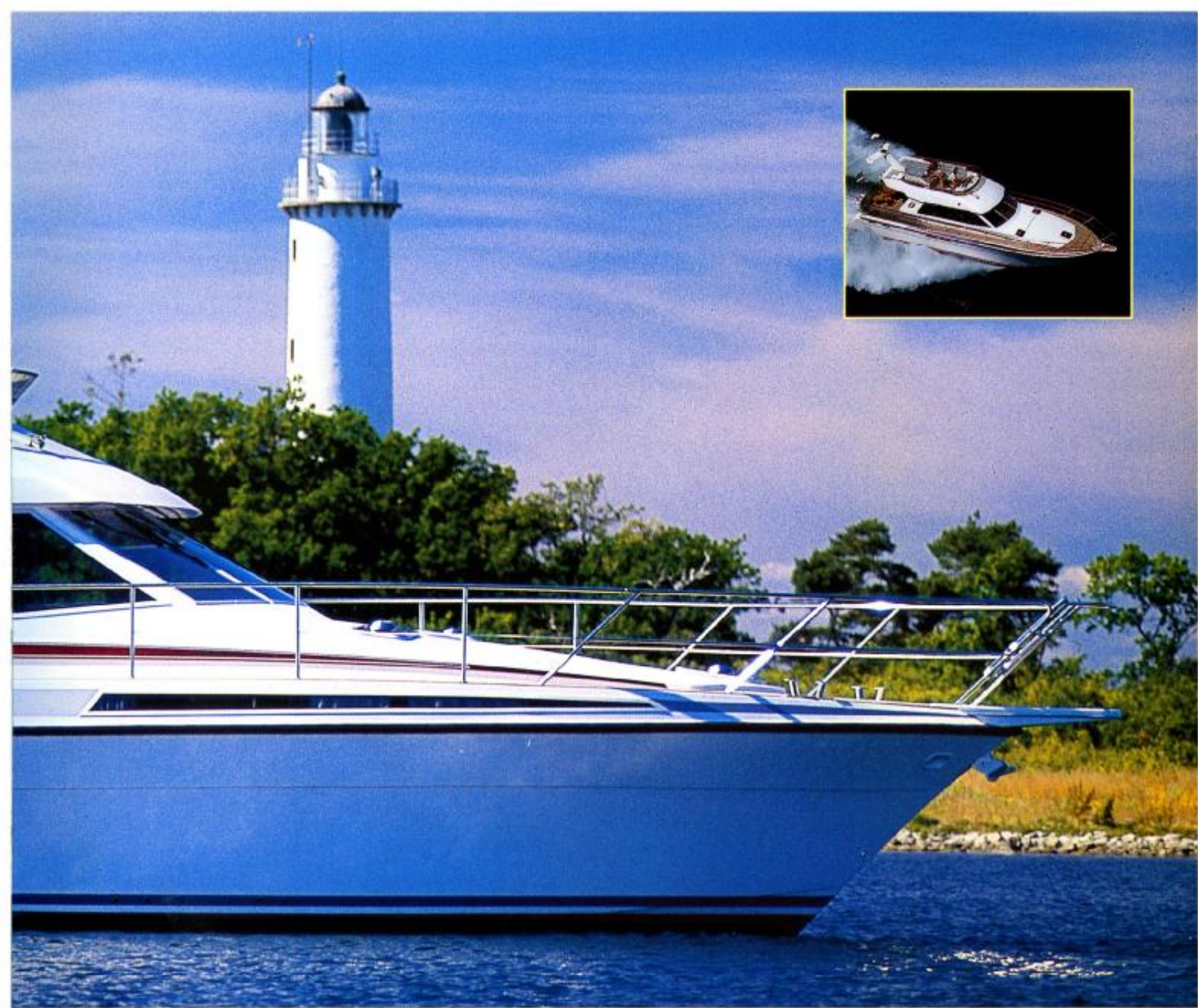


THE STOREBRO RC 500 is ideal for the owner who looks for the very best from his boat and from life aboard. She is very roomy, and the standard lay-out offers six berths, divided between the forepeak, an after cabin and an extra guest cabin amidships. There is also a well-equipped and efficient galley with dinette.

The light and airy saloon is on the same level as the very spacious aft deck, and are separated by a panoramic glass bulkhead with a sliding door. This provides generous entertaining room, and a fantastic view astern.











THE STOREBRO RC 730 is the jewel in Storebro's crown. An exclusive motor yacht built to meet the highest possible marine and personal requirements. Every boat is unique, and is tailored to the needs and wishes of the purchaser.

The construction combines advanced technology and traditional craftsmanship, shown not least by the tasteful and elegant interior, where modern technology complements the beautiful, hand-crafted wooden furniture.

The Storebro RC 730 offers almost unlimited possibilities for an owner seeking an exclusive yacht far above the average. The art of Scandinavian boatbuilding at its best.











### SRC 90 E

*The SRC 90 E is an ambulance-, transport- and special task boat for particularly demanding duties. A boat with minimum draught and an exceptionally tight turning-circle, rapid acceleration and high speed, and a very short stopping-distance.*

*The hull and superstructure are made from a carbon-fibre reinforced vinylester sandwich. The keel and bottom are reinforced with laminated-in wear-protection for hard landings.*

*The wheelhouse and passenger accommodation are suspended on elastic mounts in the hull, and are very efficiently sound-insulated to increase comfort and facilitate work and communication on board. Even at high speeds and in heavy seas.*

*The boat is powered by a Scania V8 diesel with a FF-jet waterjet unit which gives a top speed of up to 40 knots. The boat can handle a load of 2 tonnes and requires only a two-man crew.*

*The SRC 90 E can be fitted out for a variety of different marine tasks – customs, police, coastguard, lifeboat, taxi etc. – and fully-adapted to the special tasks involved.*



### Storebro 34 Sport

*A workboat built on Storebro's proven hull. The boat can be equipped and adapted for different requirements in accordance with the purchaser's specification.*

*The 34 Sport has a large working area on the afterdeck with storage space below. In the stern, a hydraulic lowering transom makes loading and unloading as easy as possible.*







## STOREBRO ROYAL CRUISER 355

L.o.a.	10.76 m (35'5")
Beam	3.75 m (12'3")
Draft	1.0 m (3'4")
Displacement	6.5/7.6 tonnes (without fuel and water)
Fuel capacity	2 x 500 litres
Fresh water capacity	400 litres
Batteries	3 x 170 Ah
Electrical system	12 V
Engines	2 x Volvo Penta diesels



## STOREBRO ROYAL CRUISER 380 BISCAY

L.o.a.	11.43 m (37'6")
Beam	3.77 m (12'4")
Draft	1.0 m (3'4")
Displacement	8/9 tonnes (without fuel and water)
Fuel capacity	2 x 500 litres
Fresh water capacity	400 litres
Batteries	3 x 170 Ah
Electrical system	12 V
Engines	2 x Volvo Penta diesels



## STOREBRO ROYAL CRUISER 420 BALTIC

L.o.a.	12.88 m (42'3")
Beam	4.20 m (13'9")
Draft	1.20 m (3'11")
Displacement	12 tonnes (without fuel and water)
Fuel capacity	2 x 800 litres
Fresh water capacity	600 litres
Batteries	2 x 170 Ah
Electrical system	24 V
Engines	2 x Volvo Penta diesels



## STOREBRO 34 SPORT

L.o.a.	10.35 m (34')
Beam	3.30 m (10'10")
Draft	1.0 m (3'3")
Displacement	5 tonnes (without fuel and water)
Fuel capacity	2 x 500 litres
Fresh water capacity	200 litres
Batteries	3 x 170 Ah
Electrical system	12 V
Engines	2 x Volvo Penta diesels



## STOREBRO ROYAL CRUISER 500

L.o.a.	15.10 m (49'7")
Beam	4.55 m (14'11")
Draft	1.20 m (3'11")
Displacement	16/18 tonnes (without fuel and water)
Fuel capacity	2 x 1,500 litres
Fresh water capacity	800 litres
Batteries	Engines: 170 Ah — Consumption: 220 Ah
Electrical system	24 V
Engines	2 x Volvo Penta or MAN diesels



## STOREBRO ROYAL CRUISER 730

L.o.a.	22.20 m (73')
Length waterline	19.50 m (64')
Beam	5.90 m (19'4")
Draft	1.70 m (5'7")
Freeboard	Forward: 2.55 m (6'9") Aft: 1.80 m (5'11")
Displacement empty	40 tonnes
Displacement fully-loaded	50 tonnes
Fuel capacity	8,000 litres
Fresh water capacity	2,500 litres
Electrical system	24 V / 220 V
Batteries	220 Ah
Standard engines	2 x MAN diesels 1100 HP, with ZF V-drive



## STOREBRO ROYAL CRUISER 380 SPORTFISHERMAN

L.o.a.	11.43 m (37'6")
Beam	3.77 m (12'4")
Draft	1.0 m (3'4")
Displacement	8/9 tonnes (without fuel and water)
Fuel capacity	2 x 500 litres
Fresh water capacity	400 litres
Batteries	3 x 170 Ah
Electrical system	12 V
Engines	2 x Volvo Penta diesels





STOREBRO BRUKS AB · S-590 83 STOREBRO · SWEDEN · PHONE +46 (0)49219500 · FAX +46 (0)49230300  
E-MAIL: [info@storebro.se](mailto:info@storebro.se) · INTERNET: [www.storebro.se](http://www.storebro.se)