



STOREBRO *Royal* 33



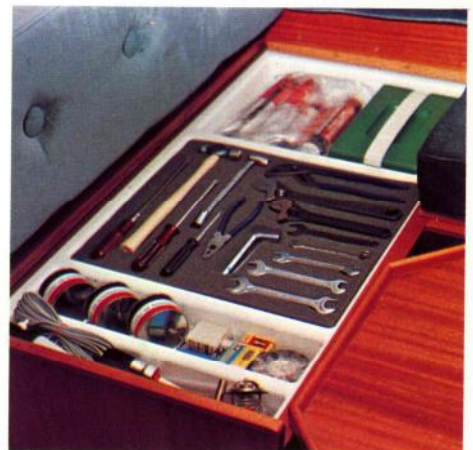
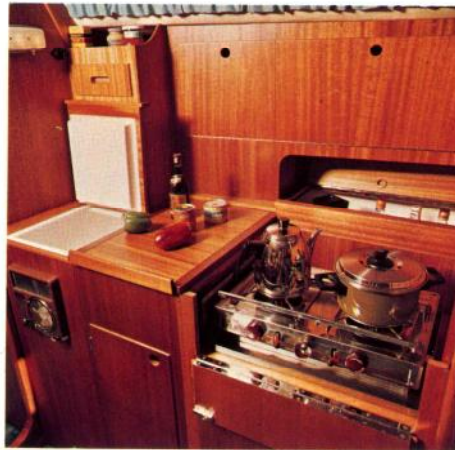
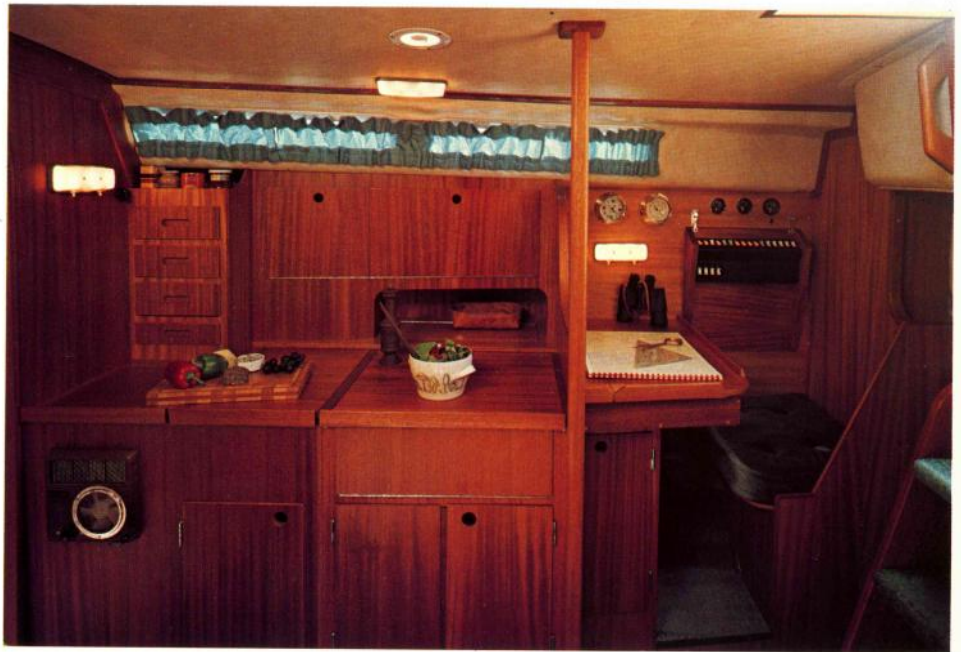
Storebro Bruks AB, Sweden, takes pleasure in presenting **STOREBRO *Royal* 33.**

Modern, fast, elegant lines plus the unmistakable stamp of Storebro fleet's classical beauty. Built with the quality consciousness and traditional hand craft which have established the respect and success which Storebro enjoys among seafaring folk everywhere.

The salon - stylish textiles match the satin finish rich mahogany. Comfortable sofas and dining table. This is where you finish off your day with a good dinner or discuss tomorrow's sailing over a chart. The dinette converts to sleeping space for two. Ample stowage under sofa and under the raised floor under the table.

Putting out to sea is doubly enjoyable when your boat is perfectly planned. Take the galley. Every detail, every surface exploited to maximum. The large quiet running refrigerator uses very little electricity. Hot and cold water fed from a tank holding 200 litres. Specially designed cabinets for glass and china (Storebro crockery optional). Efficient two stage lighting. Cutting board. Fibreglassbox behind stove for food storage. Well fitted cupboards and drawers. High quality carpentry throughout. Stoves with or without oven can be fitted.

Navigators corner with space for instruments, charts, radio etc. The electrical panel swings out on hinges for easy access to wiring which is to a standard rarely seen on sailboats. All circuits on separate automatic fuses. Direct wiring to all appliances makes fault finding easy.





A craft for people who want that little extra. Light and roomy, cosy, well designed for socializing and plenty of sleeping accommodation. The comfortable aft cabin with a walk through to the salon will comfortably accommodate two adults – crew or guests. Or could be used as parent free accommodation by the youngsters. Wardrobe. Discreet, effective lighting. Good ventilation. All for a sound, comfortable night's sleep.

Fore cabin with two berths. Storage on shelves and under berths. Can be made private by closing the doors.

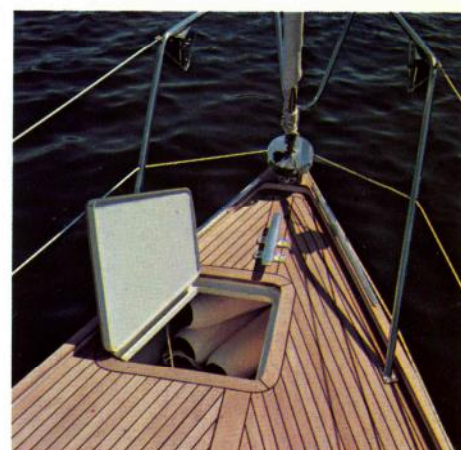
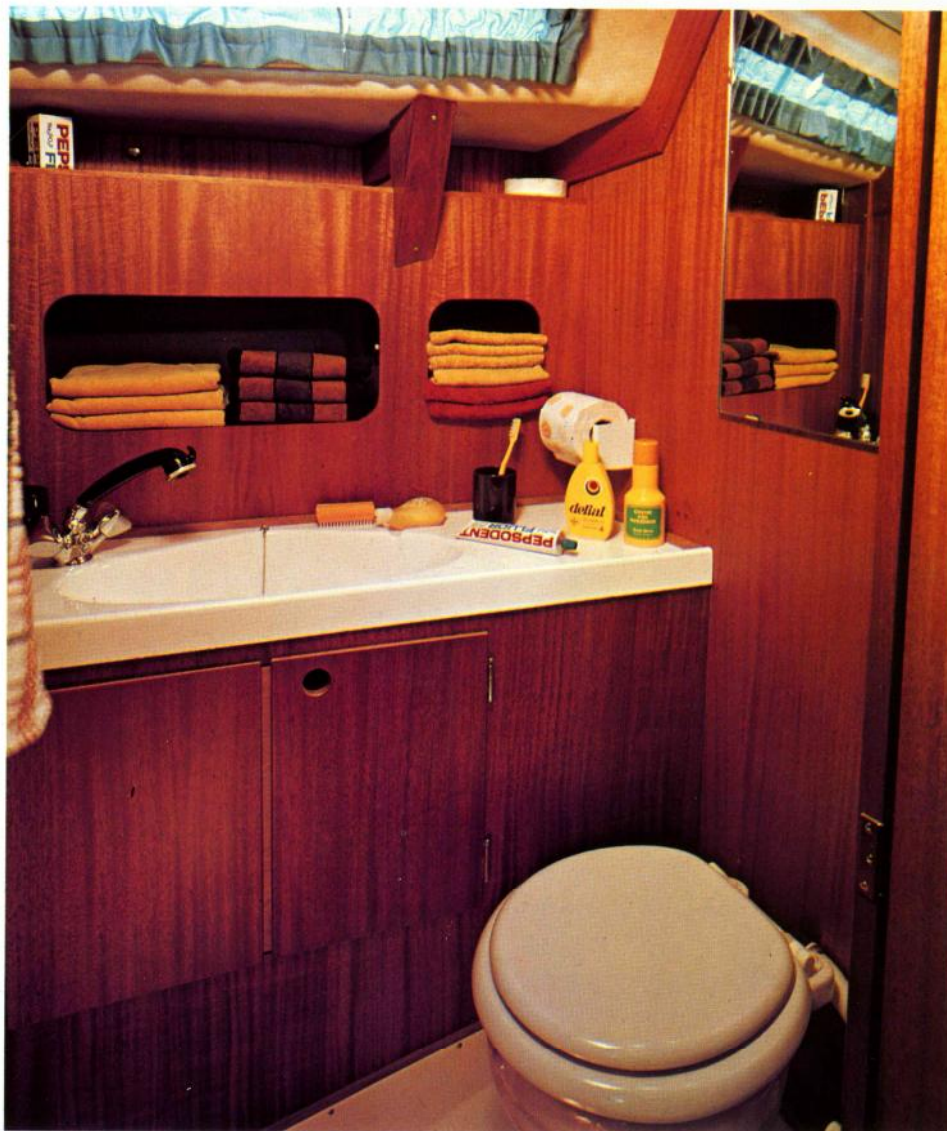
Bathroom with toilet, wash basin and efficient shower with pressurised hot and cold water. An important contribution to life aboard. A teak lattice set in the floor covers the shower water waste discharged with electrical pump.

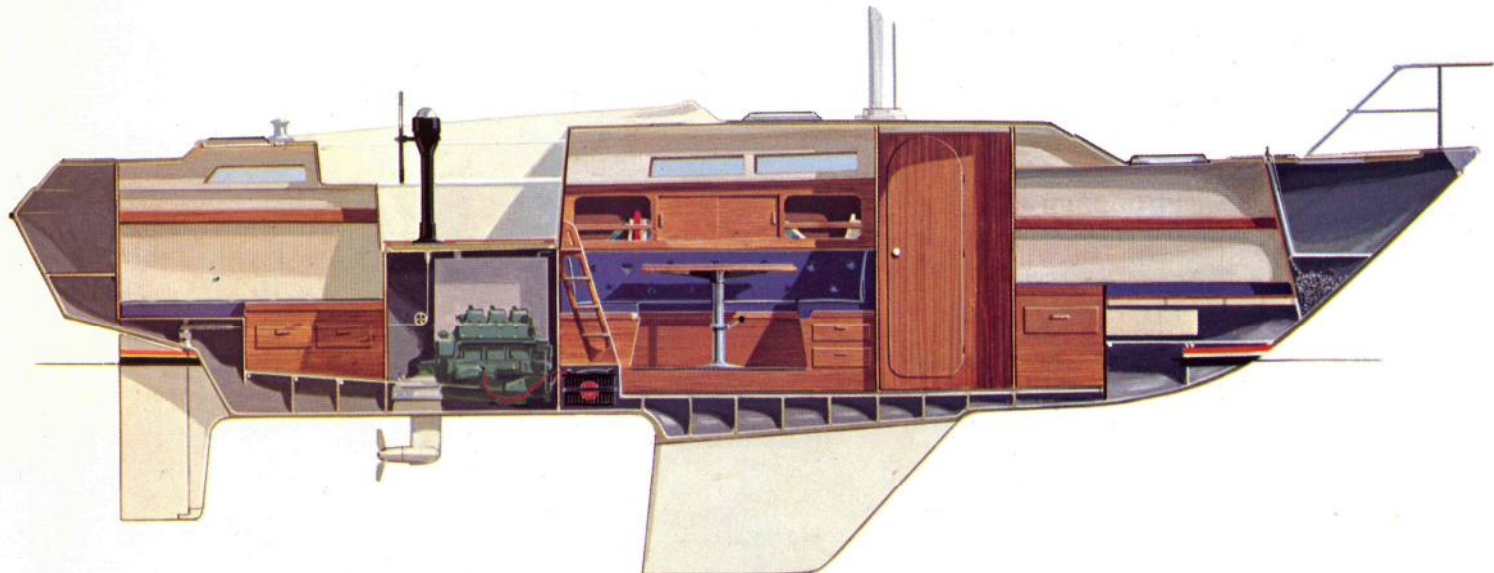
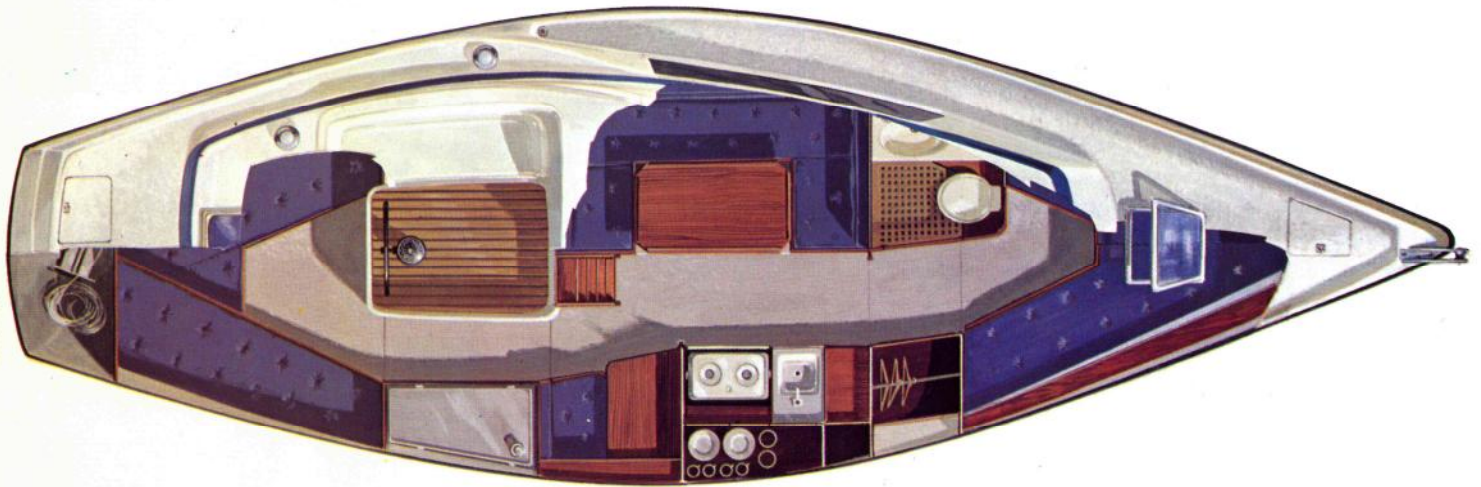
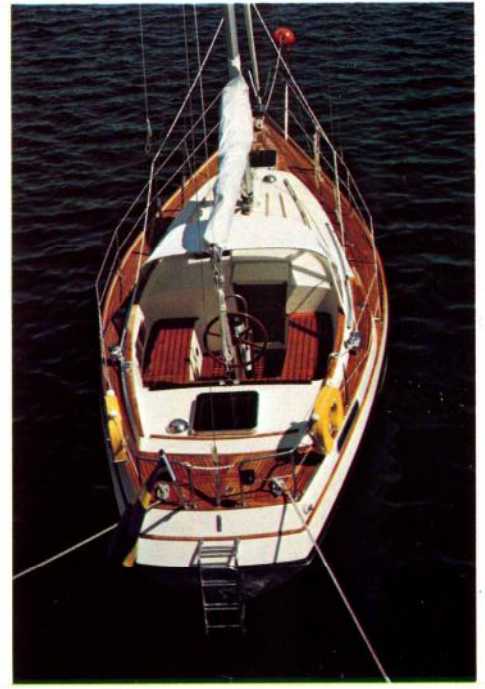
Roomy cockpit which can be equipped with a table mounted on the steering pedestal for dining in the open air. Teak slatted seats on hinges for easy cleaning under, always offers dry seats. Cockpit sides are slanting to give maximum seating comfort. Cockpit storage to port for sails.

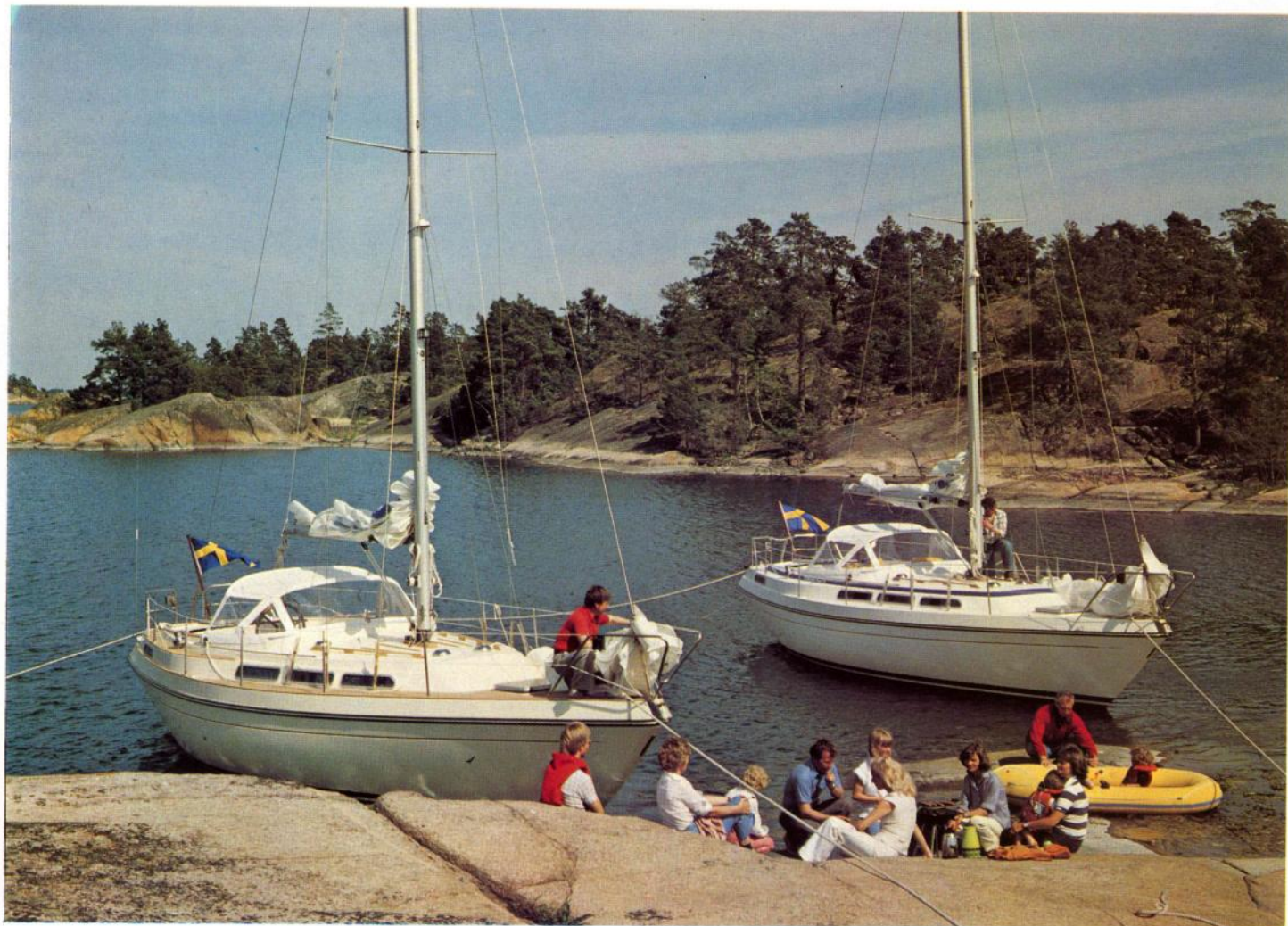
Deck storage fore and aft with space enough for all your fenders, anchors, mooring lines etc. Teak-deck shown on some pictures is optional.

Successful long voyages are not solely dependent on well planned fittings. More important still is being secure in the knowledge that your craft is built safely and strongly from stem to stern. Storebro have always held safety details in great respect – rather one too many than one too few. There are many examples. Hull with hefty stringers and sturdy keel and rudder fastenings. All fiberglass details are handlaid and cured in a special curing room where temperature is raised to ensure full curing. No smell of resin in the finished boat. Three electric and one manual bilgepumps. All boat built to the standards of "Det Norske Veritas" and delivered with their certificate.

The **STOREBRO Royal 33** is designed and built for uncompromising sailors who want quality throughout and who are willing to pay just a little extra go get it.









STOREBRO BRUKS AKTIEBOLAG

S-590 83 STOREBRO, SWEDEN - TEL. 0492/301 60 - CABLE "STOREBROBRUK" VIMMERBY - TELEX 3943 STB