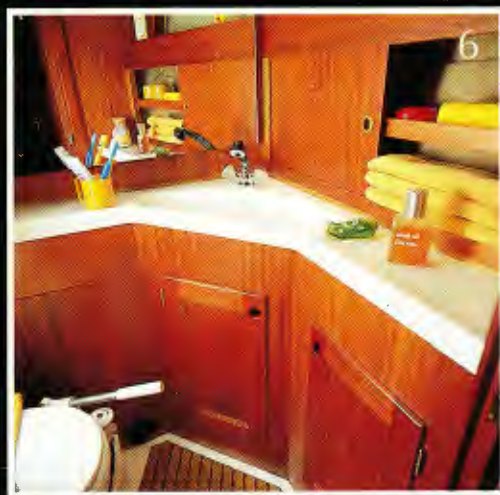
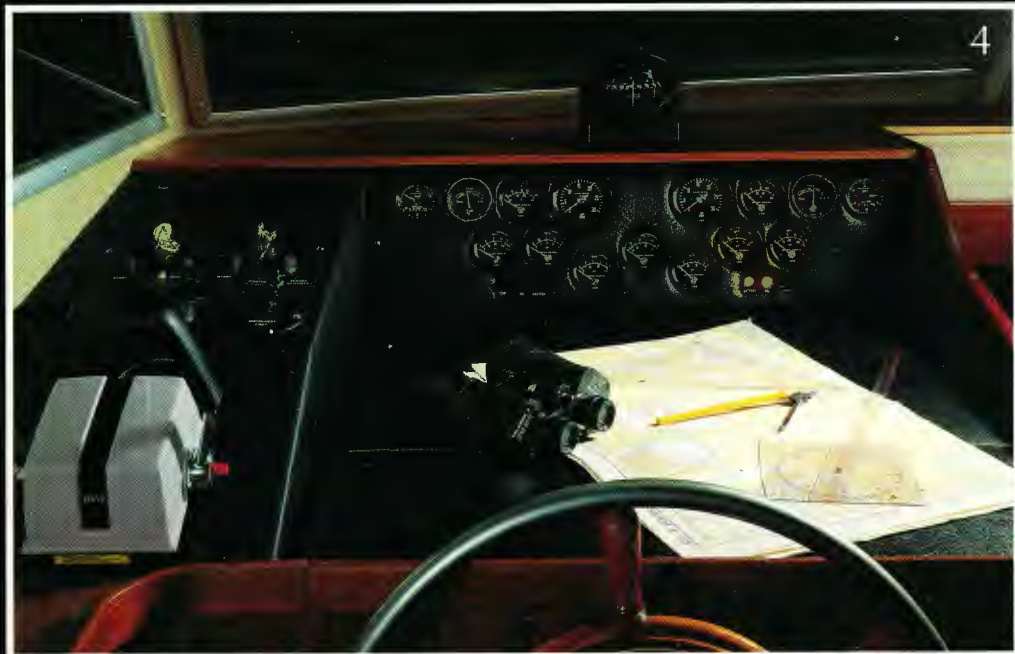


1983-25



Storebro Royal Cruiser 36







8



9



10

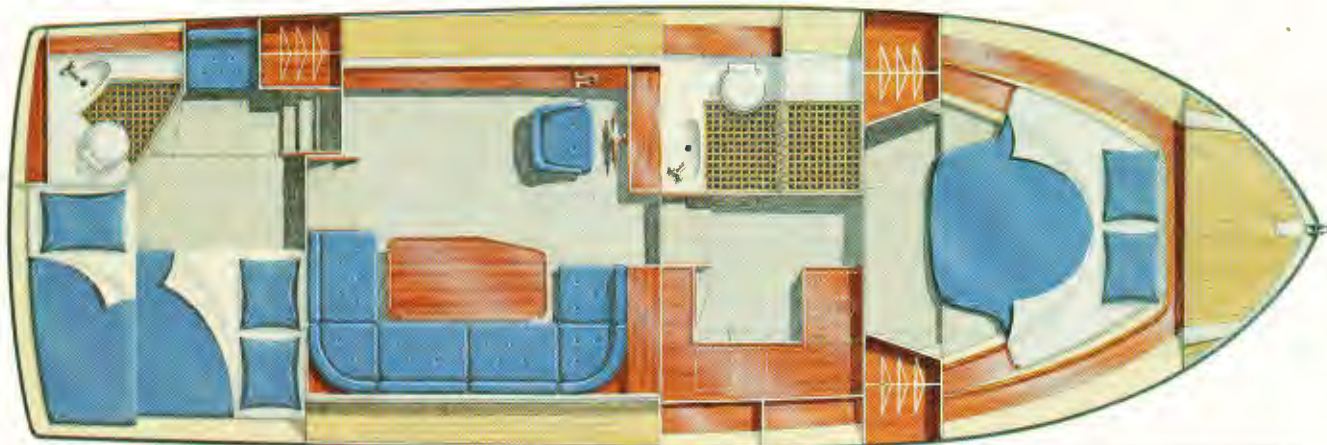
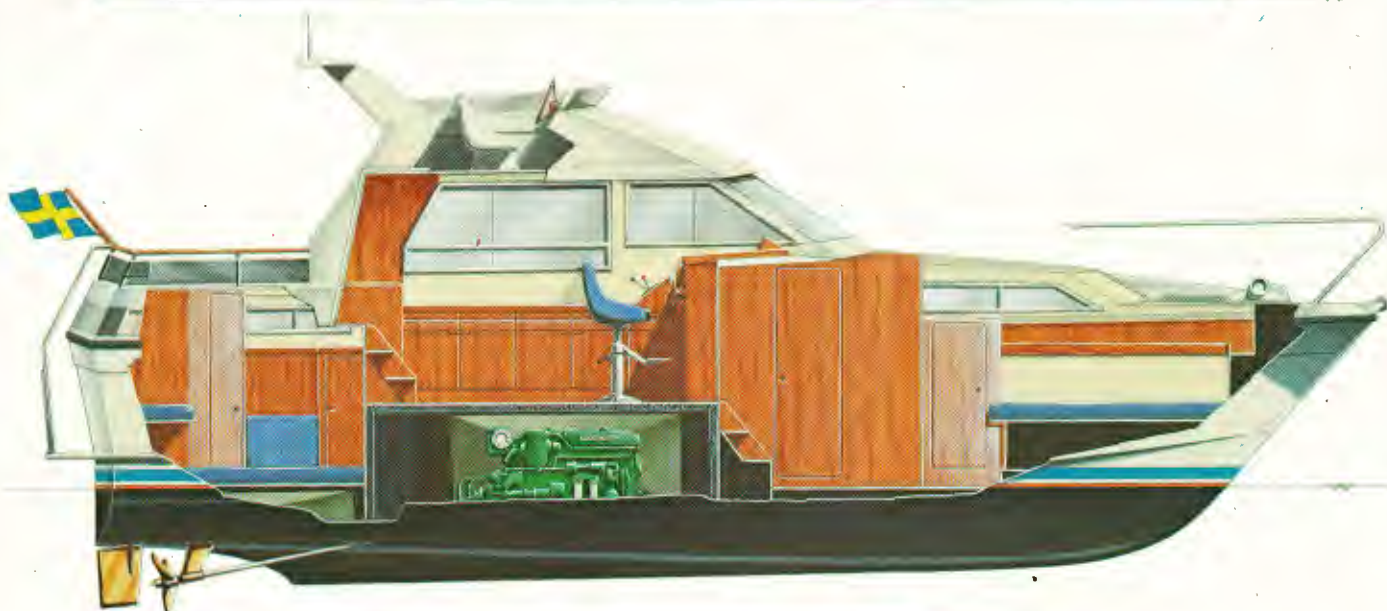
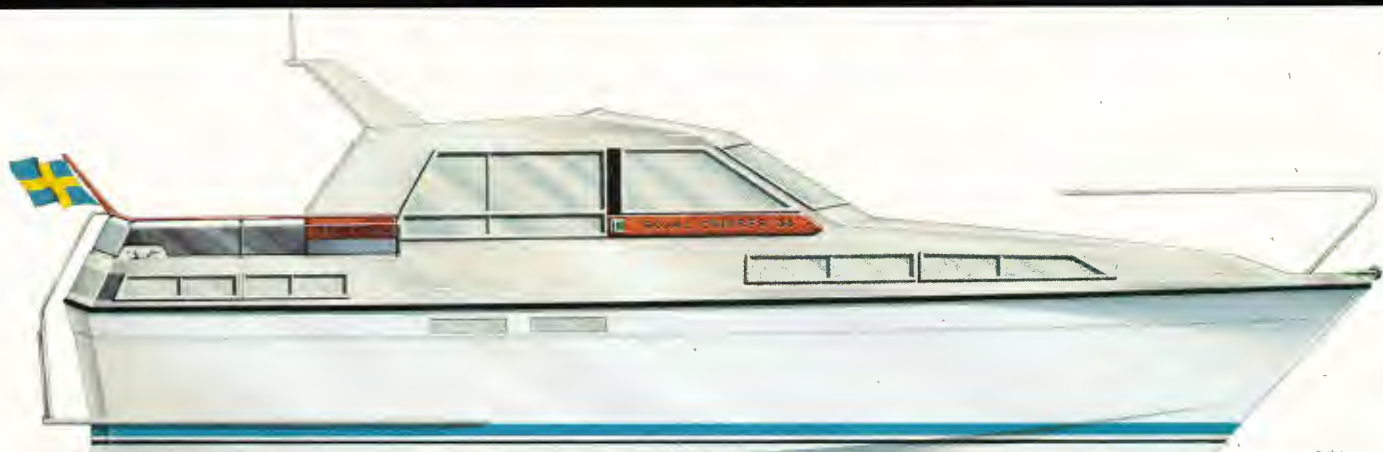
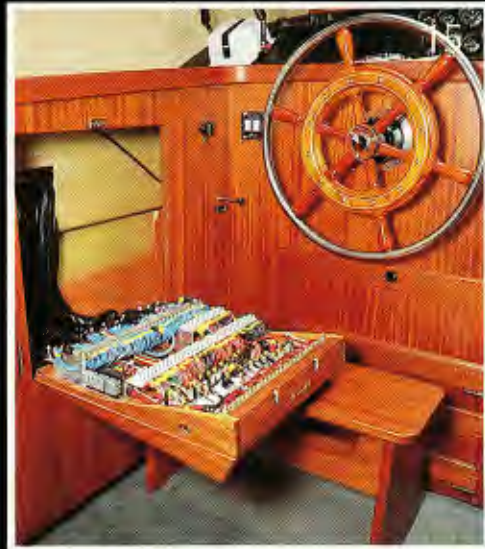




11



12



Specifications SRC 36

A new cruiser from Storebro which combines traditional boat building with modern design and technology. In building the Storebro Royal Cruiser 36 we have utilised the experience gained over the past 30 years of building rugged and sea worthy craft, all of which are built to the meticulous standards demanded by Det Norske Veritas. Storebro Royal Cruiser 36 – built for sea going families, providing optimal comfort and space while in harbour, and maximum security at sea. The large aft deck is a sun bathers dream, sheltered from the wind, but completely open to the sun, providing a large area for relaxing and socialising.

The interior, you will find, is very spacious and designed with typical Scandinavian flair. The comfortable aft cabin has accommodation for 3 adults, with its' own separate toilet room and shower.

The large deck saloon is virtually as spacious as on the Storebro Royal Cruiser 40, again providing a good area for socialising and relaxing.

On this entirely new design, the owners' cabin has been located forward with a large double berth and access to separate toilet and shower cabin.

The galley has been designed with considerable thought to the requirements of cooking at sea with ample storage space, large working surfaces, built in cutting boards, with everything readily to hand for the cook. Storebro Royal Cruiser 36 is a craft built for maximum safety and strength, a craft in which you can happily take to sea and make the most of your sea going life.

The hull of the Storebro Royal Cruiser 36 is designed for fast offshore cruising providing a comfortable soft ride in short choppy seas.

By meticulous care in the hand laying of the glass reinforced plastic and utilisation of the well known integrated stringer system an extremely strong + rugged hull is produced, which is the hallmark of all Royal Cruisers.

Storebro Royal Cruiser 36 Baltic

L.o.a.	11,0 m
Beam	3,83 m
Draft	1,2 m
Displacement	Approx. 9 tons
Fuel capacity	2 x 660 l
Fresh water capacity	400 l
Number of berths	5
Electrics	24 V
Batteries	2 x 165 Ah
Engines,	
Twin Volvo Penta TAMD 60 C	
marine diesels, 2 x 240 shp	
Speed	Approx. 23 knots

Hull, deck and superstructure

Handlaid glass reinforced plastic. Teakdeck available as optional equipment.

Interior

Selected mahogany with satin finish varnish.

Standard equipment

3 pairs of mooring bollards/stemhead fitting with roller/safety glass throughout/navigation lights to international standards/flagpole and boat hooks/handrails/pulpit/lifelines/6 fenders/4 moorings/anchor/anchor line/horn compressor type/stainless steel swimming ladder/fender storage in the deck amidships Port and SB/ aft railing in stainless steel and mahogany.

Fore cabin (owner's cabin)

Queensize berth/wardrobes/lockers and shelves/hatch to foredeck/shower cabin/toilet room with WC and wash basin/pressurized hot and cold water/mirror/lockers and drawers.

Galley

Space for 2-burner stove or stove with oven/double stainless steel sinks/pressurized hot and cold water/chopping board/glass and china rack/glass, china and cutlery for 6 persons/el. refrigerator/fire extinguisher/sliding window.

Deck saloon and cockpit

Helmsman's seat/complete engine instrumentation/engine controls/hydraulic steering/compass/sunlog/chart light/hour meters/fuel gauges/fire extinguisher/manual bilgepump/U-shaped sofa with hi-lo table/sideboard/sliding windows.

Aft cabin (guest cabin)

One double bed, one single bed, locker, shelves and drawers/toilet room with WC, wash basin and shower/pressurized hot and cold water/mirror/lockers/escape hatch/opening windows/water tank under the double bed.

Engine room

Twin engines, flexibly mounted/two fuel filters/sea water filters/electric bilgepumps/fresh water pump/alternators/fuel tanks in stainless steel/ample sound insulation.

Miscellaneous

Service box containing tools, spares, first aid box, distress signals/24 V outlet sockets in salon, engine room, galley, cabins and toilets/batteries/curved frontwindows to give increased strength/electro hydraulic trimtabs/cushions/curtains/fitted carpets/panel lights over side windows/cabin lights/foldable mast of targa-type for radar etc./flying bridge available as optional equipment.

Builders: Storebro Bruks AB

Design: W.H Wilke/John H.V. Lindblom

The manufacturer reserves the right to make alterations without notice.



Purveyor to H.M. the King of Sweden

Powered by

VOLVO PENTA

diesel

Pictures

Text to the pictures on page 2, 3, 4, 5 and 6.

1. The deck saloon with its big sofa makes a cosy and comfortable place for socialising.
2. The luxurious owner's cabin offers complete comfort. A large double bed, plenty of wardrobe space and shelves, bathroom with toilet and a separate shower cabin.
3. The self contained guest cabin with one double and one single bed, wardrobe lockers and drawers, all finished out in mahogany.
4. Comprehensive instrumentation and a large chart table in front of the helmsman.
5. The foreward toilet with washbasin, W.C., a separate shower cabin and ample locker space.
6. In the guest cabin the bathroom offers shower, washbasin and W.C.
7. Scandinavian flair has been utilised in the well appointed galley, with electric refrigerator with freezer, double stainless steel sinks, with pressurized hot and cold water. Glass, china and cutlery, stove options to buyer's choice. Masses of stowage space.
8. Ample aft deck stowage for anchor and ropes.
9. The foredeck with bowroller for easy anchor handling, showing the conveniently placed escape hatch and rope locker. Teak deck optimal.
10. Fender stowage, right where it is needed, amidships on each side.
11. The sofa on the flying bridge converts easily to a comfortable sun bed.
12. The aft deck, with room for eating and sunbathing giving comfortable access to the deck saloon, flying bridge and the main deck. The teak deck is optional.
13. The spacious, and well sound insulated engine room, easy to reach by steps in the fore-end.
14. An indication of the attention to detail paid by the Storebro craftsmen is the comprehensive service box, containing tools, spare parts, first aid kit and distress flares.
15. The control panel for the meticulously detailed, but simple to use, Storebro electric system, showing automatic circuit breakers on the 24 V system.

Storebro

Storebro was originally founded in year 1728 by major W.M. Pauli, who erected a hammer forge, a blast furnace, a flour- and saw mill and last but not least a small foundry, which gradually developed into a modern industry with a capacity of 4.000 metric tons per annum of high grade cast iron for machines. Since early 18th century a mechanical workshop was established. Today Storebro Bruks AB employs around 500 people. The current production program, besides boats, consists of machine tools and special machines, machined cast iron, sub-contracting and re-conditioning of used machines.

Boat production at Storebro started with the building of small rowing and fishing boats. From the beginning the emphasis was on quality. Today Storebro boats are well known the world over for their superb finish, design comfort and seaworthiness.

The boat building tradition at Storebro lives on and is transferred from generation to generation.

Today our range includes boats of between 31 Ft and 40 Ft in length with both power and sail.

The map shows the location of our two boat yards on the Swedish east coast.

We would very much like to show you our yards, our production and last, but not least, our boats.

So why not come and see us?



