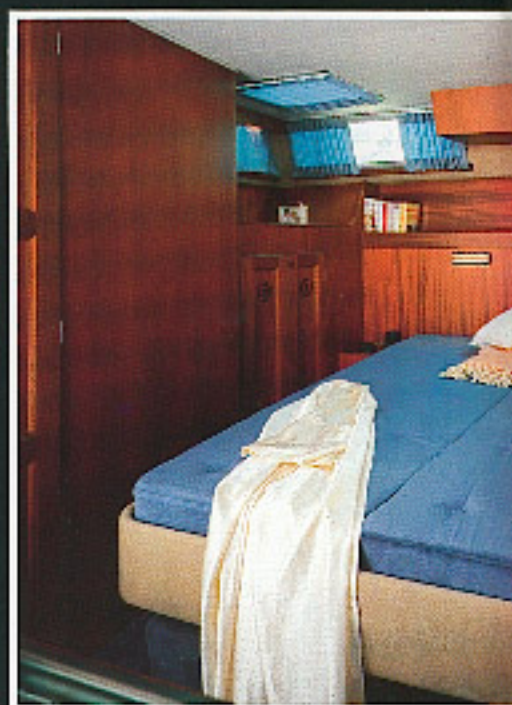
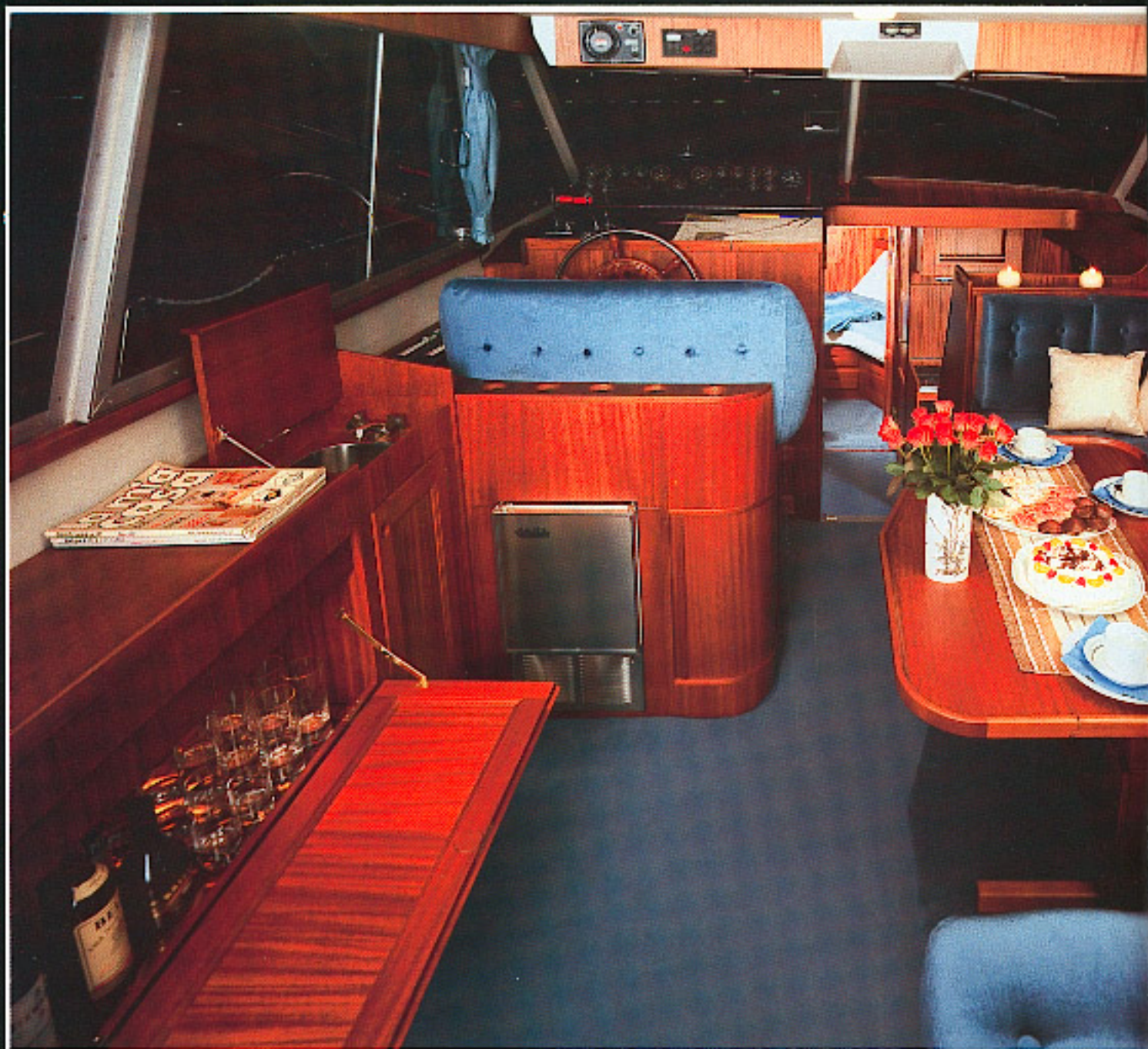
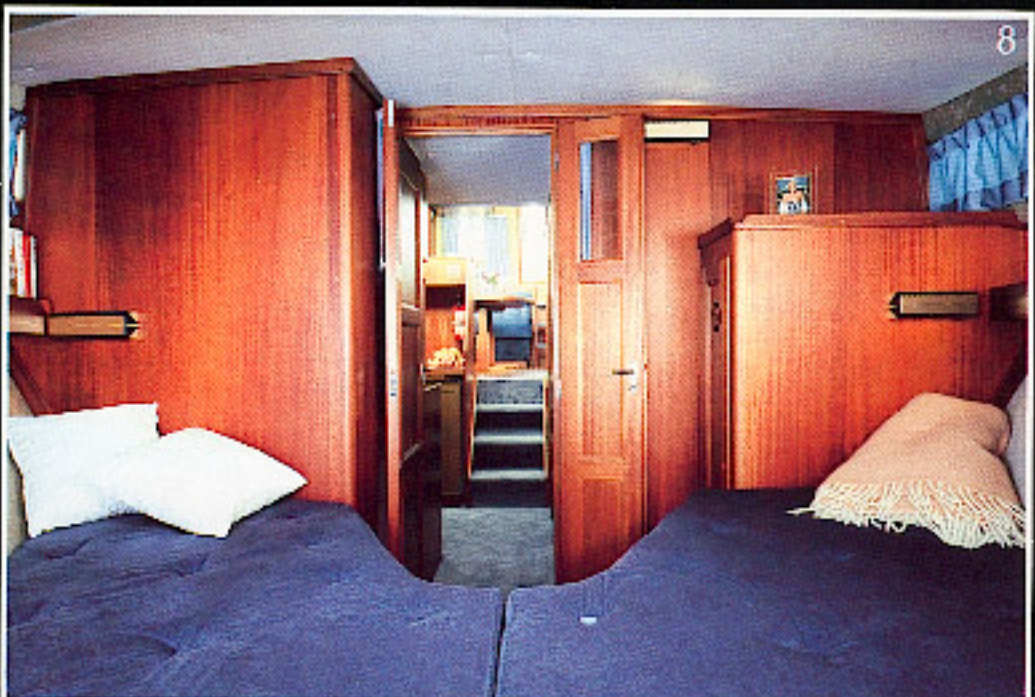
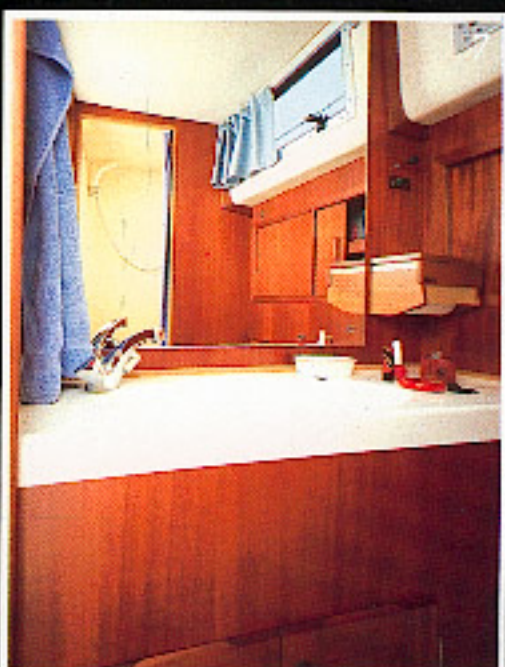
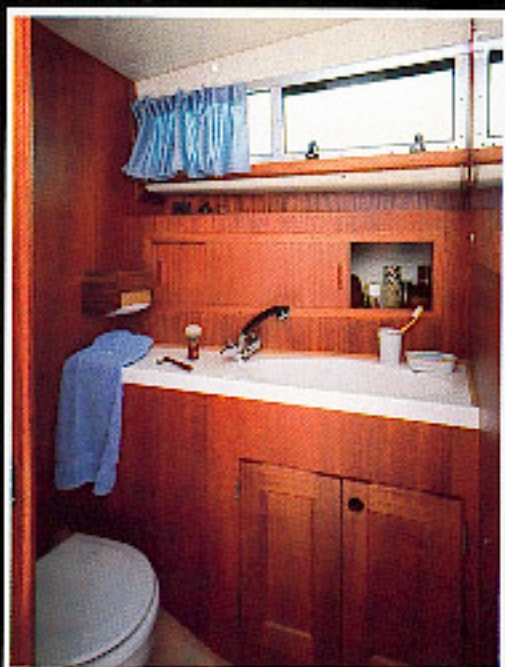
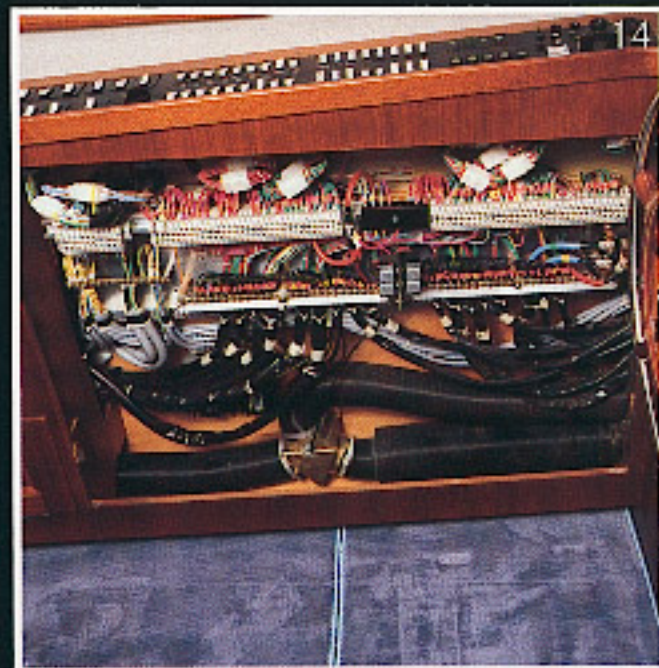


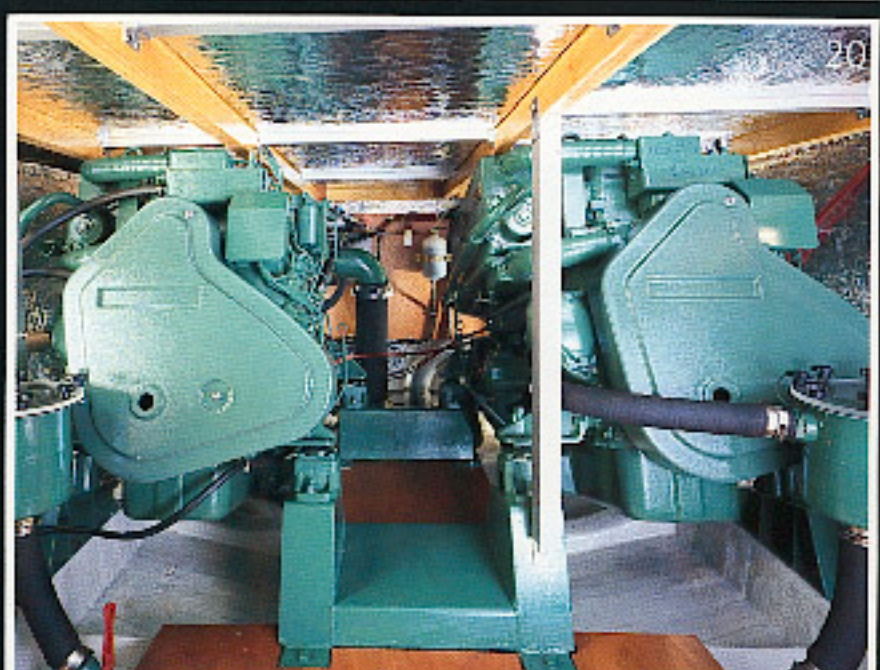
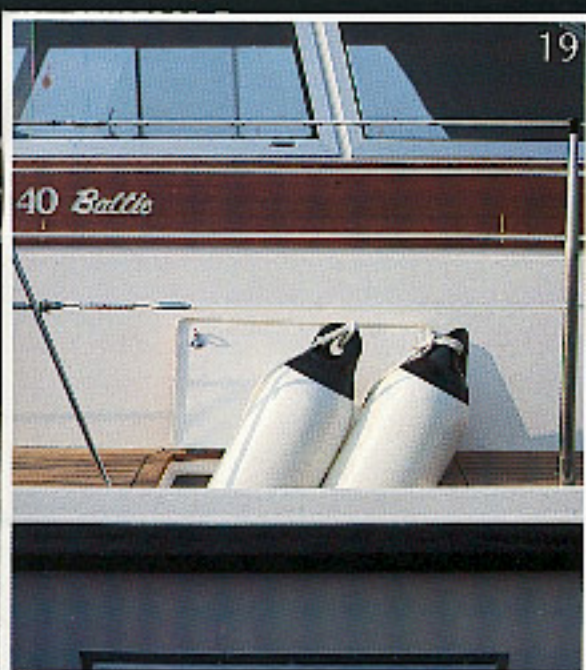
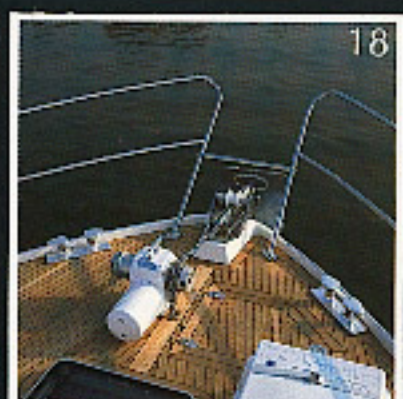
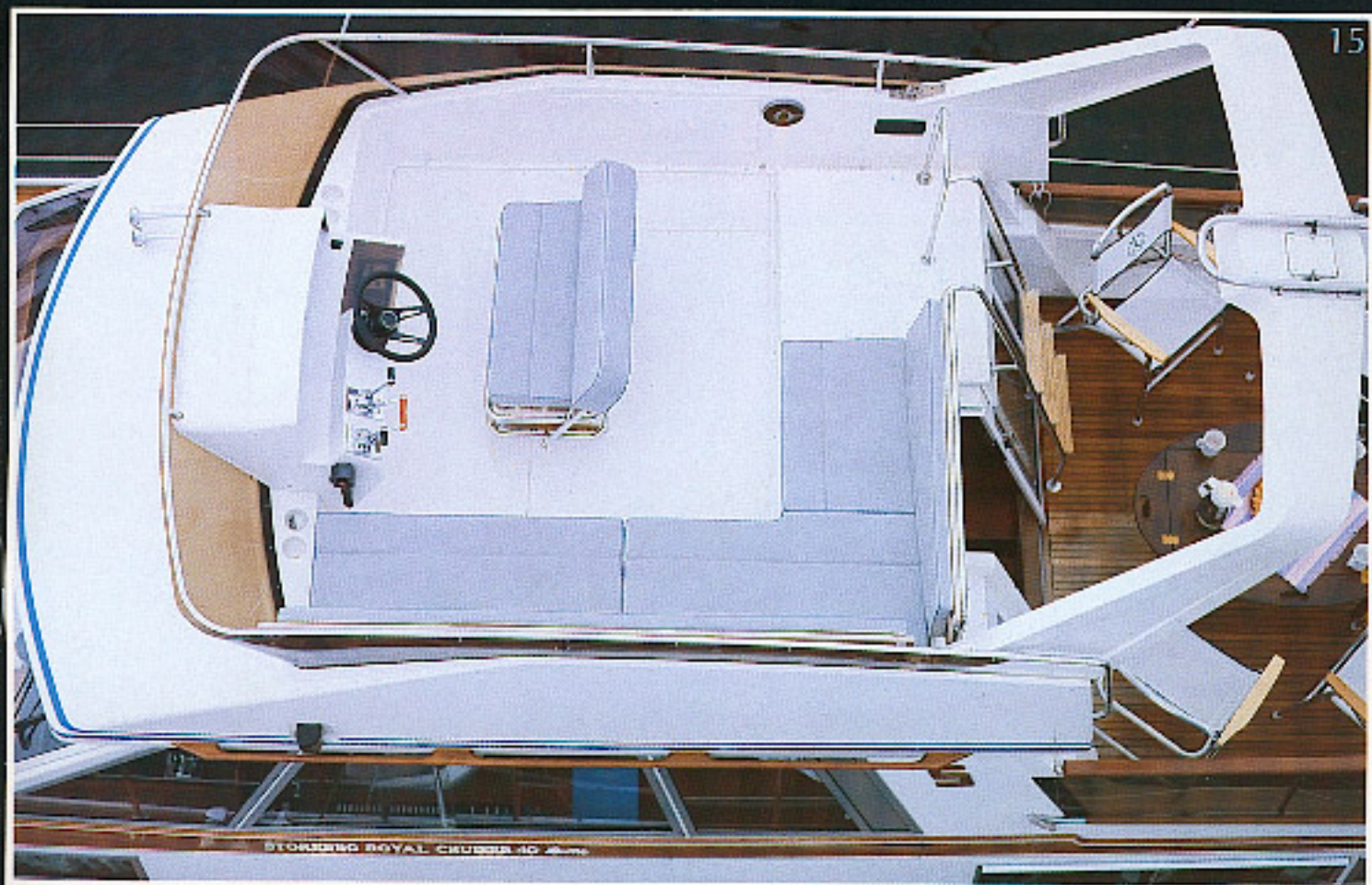


Storebro Royal Cruiser 40
Baltic & Biscany

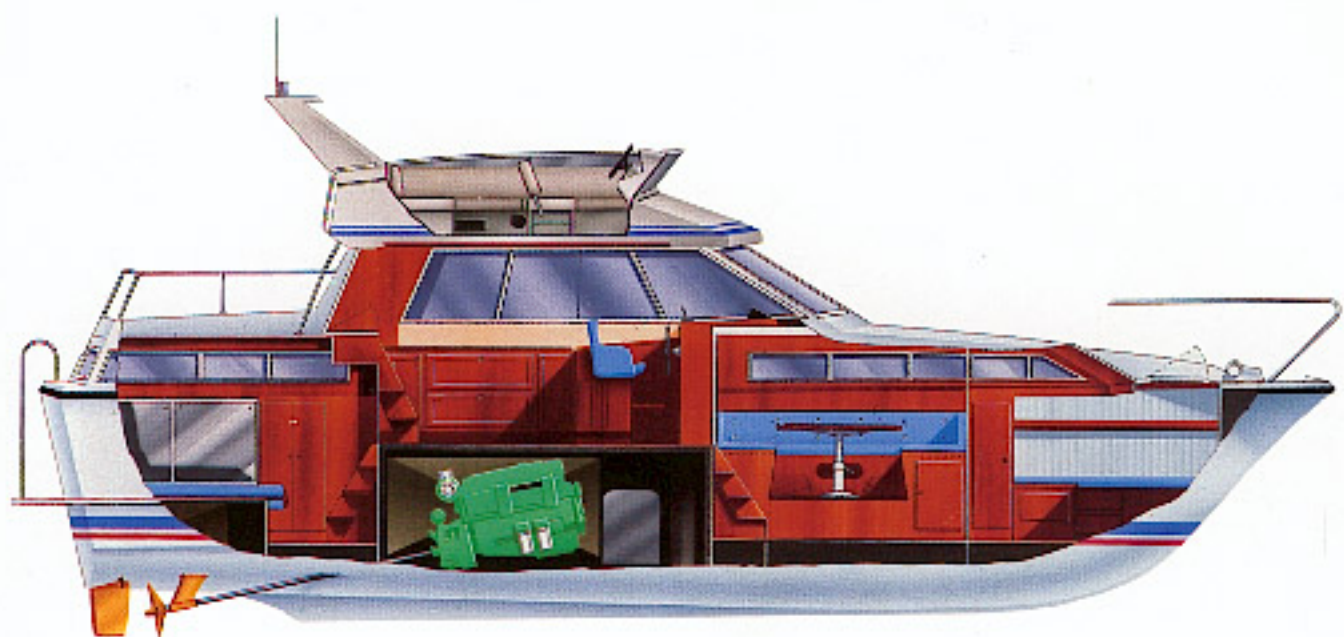






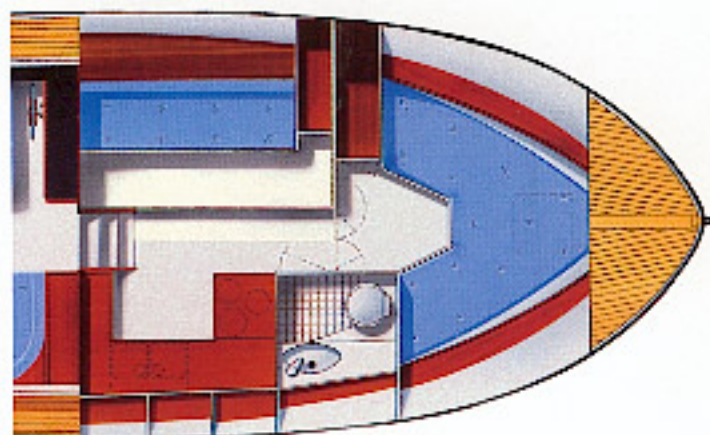


SRC 40 Baltic Flying Bridge

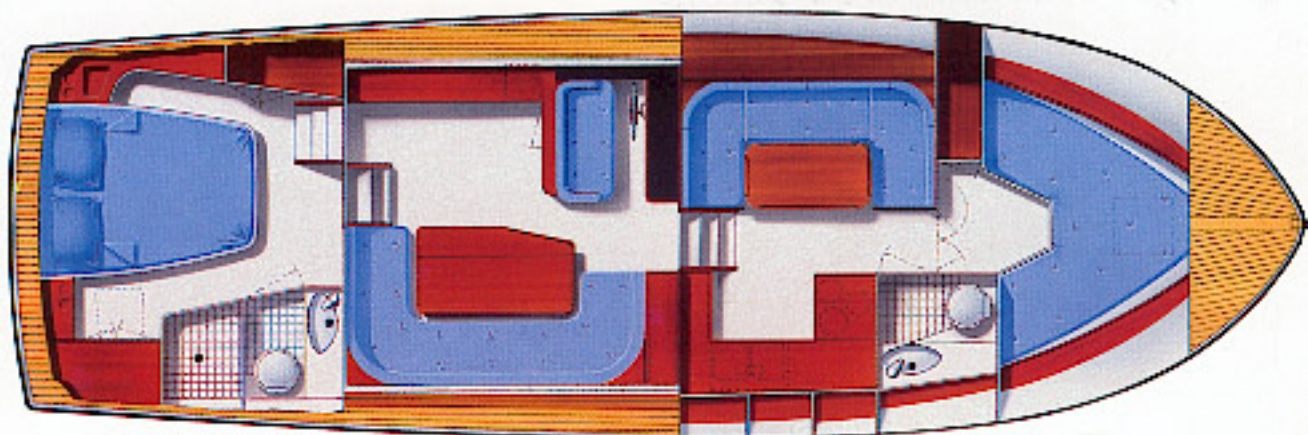


SRC 40 Alternative lay-out

Alternative layout gives an extra guest cabin separated from the galley by a bulkhead. The cabin has upper and lower berths and a wardrobe.



SRC 40 Baltic Standard lay-out



Specifications SRC 40

Storebro Royal Cruiser 40

Available as pleasure craft in 2 variations.

40° Baltic: With deck salon and aft cabin.

40° Biscay: With deck salon without aft cabin, also available with crewcabin.

Specification Storebro Royal Cruiser 40

Hull, deck and superstructure:

Handlaid glassreinforced plastic.

Teakdeck is available as optional equipment.

Interior:

Selected mahogany with satin finish varnish.

L.o.a.	approx 12.09 m – 39' 8"
Beam	approx 3.91 m – 12' 10"
Draft	approx 1.20 m – 3' 11"
Displacement	approx 11 tons
Fuel capacity	approx 2×800 l – 2×175 imp. gallons
Fresh water capacity	approx 600 l – 132 imp. gallons
Number of berths	6
Electrics	24 V
Batteries	2×170 Ah
Engines	2×Volvo Penta TAMD 61 A, 2×294 shp 2×Volvo Penta TAMD 71 A, 2×344 shp

Standard Equipment

Deck: Deck fittings – 3 pairs of mooring bollards, stainless steel – Stemhead fitting with stem roller – Safety glass throughout – Navigation lights to International standards – Mast, flag pole and boat hooks – Hand rails – Pulpit – Life lines – 6 Fenders – 4 Moorings – El. anchor windlass incl. catapult and anchor – Horn, compressor type – Stainless steel swimming ladder – Fender storage in the deck amidships Port and SB.

Fore cabin: Two berths with stowage space under – Wardrobe – Deck hatch.

Dinette and Galley:

U-shaped settee with table that can be lowered to form a double berth (P) – Galley with space for 2-burner stove or stove with oven – Double stainless steel sinks – Pressurized hot and cold water – Chopping boards – Glass and china rack – Glass, china and cutlery for 6 persons – 90 l. electric refrigerator – Tool box under settee containing e.g. tools, first aid box, distress flares and engine spares. The dinette can on special order be replaced by a guest cabin with two berths.

Toilet room, forward:

Wash basin with shower, hot and cold pressurized water – WC – Mirror – Sliding window – Lockers and shelves.

Cockpit and deck salon:

Complete engine instrumentation – Echo sounder – Compass – Sumlog – Autopilot – Chart light – Hour meters – Fuel gauges – Fire extinguisher – Morse controls – Morse steering – Manual bilge pump – Helmsman's seat – U-shaped sofa with hi-lo table – Bar with el. refrigerator and sideboard with sink – Navigator's sofa integrated in decksalonsofa – Ceiling panel for extra instruments – Cigarettelighter – Battery warning system – Fuel gauges – Freshwater gauge.

Aft cabin (only Baltic):

Queen-size berth – Wardrobes – Lockers and shelves – Dressing table with mirror – Fresh water tanks (600 l.) under berth – Toilet room with shower compartment, wash basin and WC – Pressurized hot and cold water – Mirror.

Engine room:

Twin engines, flexibly mounted – Two fuel filters – Sea water filters – Five electric bilge pumps – Fresh water pump – Alternators – Fuel tanks, 2×800 l.

Miscellaneous:

Cushions, curtains and fitted carpets – Interior lights throughout the boat – Outlet sockets in salon, engine room, cockpit and aft cabin – Batteries – Curved front windows to give increased strength – Electro hydraulic trimtabs – Groundplate (Dynamplate) – Manual bilge pump.

Flying Bridge (Optional):

L-sofa – Helmsman's sofa – Engine controls – Engine instruments – Compass – Repeater for log – Trimtab controls – Controls for anchor windlass – Repeater for echo sounder – Bar locker – Storage locker – Cushions.

Builders: Storebro Bruks AB

Design: Super structure W.H. Wilke

Hull and interior John H.V. Lindblom.

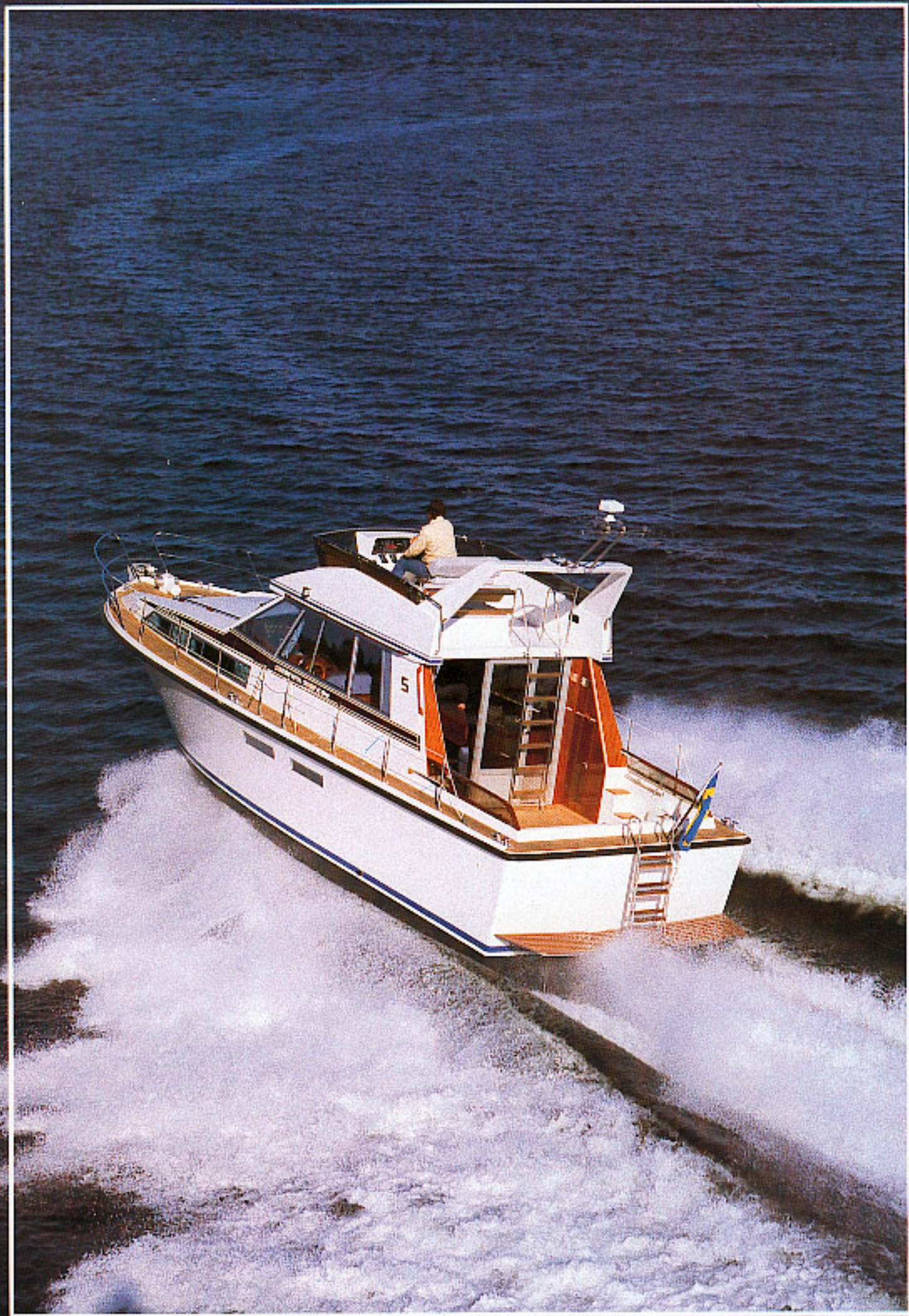
Certain extra equipment can appear in the pictures.

The manufacturer reserves the right to make alterations without notice.



Powered by
VOLVO PENTA
diesel

Purveyor to H.M. the King of Sweden



STOREBRO DRUKS AB

S-590 83 STOREBRO, SWEDEN. PHONE +46 492 30100. TELETYPE +46 492 30100. TELEFAX +46 492 30100.