

**STOREBRO ROYAL
CRUISER 43**





STOREBRO ROYAL CRUISER 43

We introduce our new 43 footer. Another member of the famous ROYAL CRUISER Class.

When we sat down to plan the 43 ft. Royal Cruiser we had certain basic principles in mind. We wanted a boat which lay between the 34 ft. and 47 ft. Royal Cruisers. All the good qualities — seaworthiness, quality, elegance — which have become bywords with the sister ships must be equalled or surpassed. In addition we aimed for lines which were unmistakably "Royal". Our goal was quite simply to find a boat worthy of the Storebro tradition.

We chose the best materials; we used our long experience as boat builders — and here is the result. A boat which stands at the summit of the art of boat building today. A boat which we are proud of.

Now it is your turn to decide if we have succeeded. Make a careful comparison with others in its class.

Look at the construction and detail work. Look at everything. We are convinced that the comparison will be to the advantage of the 43' Royal Cruiser. This vessel fulfills the most fastidious wishes; that is why we have built it. For you, who can be happy only with the best.



1 The dinette with U-settee provides ample seating for six people.

2 Dinette from another angle, also showing the forward cabin with two berths.



3







5

6





3 The galley — room for several cooks!

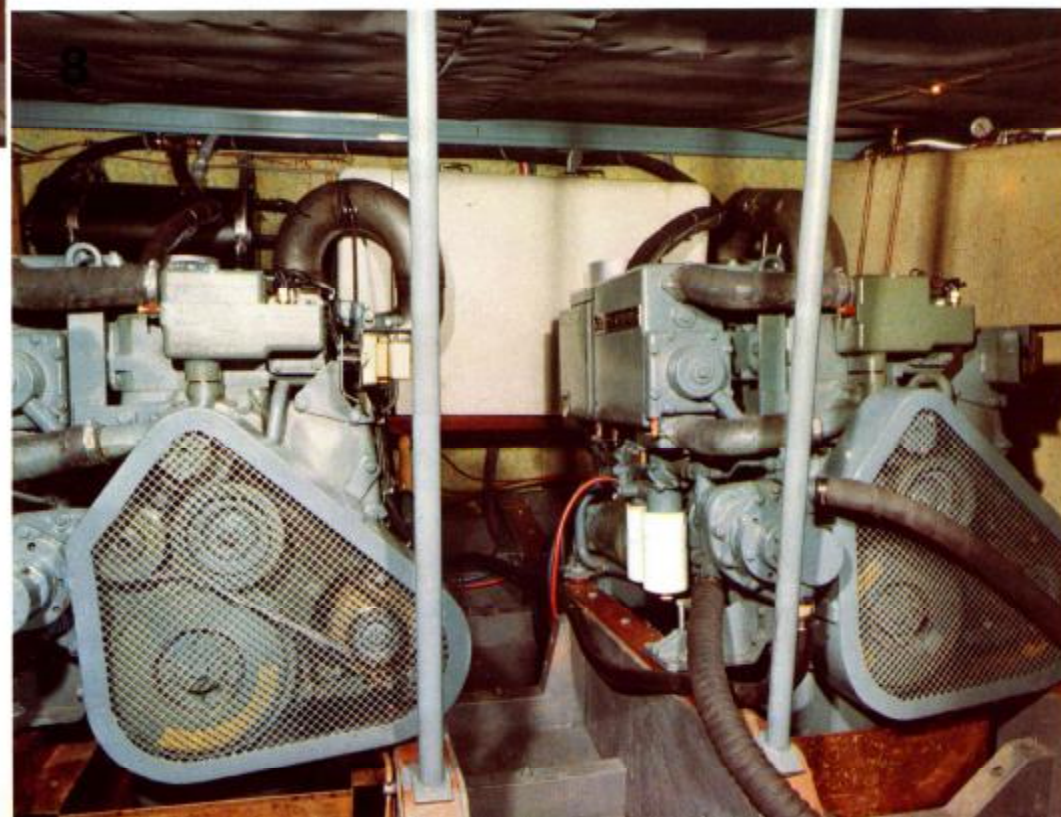
4 Deck saloon looking aft. In standard form, the deck saloon is unfurnished apart from the helmsman's seat and bar. This enables owners to use their favourite colours and types of furniture and gives each boat an individual style. The picture shows the deck saloon furnished by one of our German owners.

5 Deck saloon looking forward. Well equipped steering console to (P).

6 After cabin — or Owner's Stateroom, which it may deservedly be called. Two very wide berths. Dressing table and three wardrobes. Toilet compartment with basin; separate bathroom with hip bath.

7 Steering position. Double Morse controls and complete instrumentation. (Automatic pilot and echosounder are optional.)

8 The engine room with two Volvo Penta TAMD 70 C 280 hp DIN each which give a speed of 19 knots. Behind the engines can be seen the 6-kw generator. (Optional).



Round bilge semi-displacement mahogany hull with efficient spray rails give the ultimate for a dry, soft and stable ride, even in the roughest weather conditions.

Apart from the helmsman's seat and bar the deck saloon is unfurnished so that owners have complete freedom of choice in decor and furnishings. A companionway at the after end leads to the owners stateroom.

This has two very wide berths, dressing table and three wardrobes. To (P) is a separate toilet compartment with wash basin and w.c., whilst to (S) is the unusual luxury of a hip bath. From the forward end of the deck saloon a companionway leads to the dining saloon and galley. The galley is nicely equipped with 85 l. refrigerator, space for electric or gas cooker with oven. There are good cupboards, stainless steel sink, chopping board, etc. The U-shaped seat gives ample seating for six people to sit at table. This dinette can easily be made into a double berth by lowering the table.

The second w.c. compartment is forward of the galley; it contains w.c., wash basin and shower. Opposite this is a spacious hanging locker. The forecabin has two berths with stovage space beneath and a hatch to the fore deck.

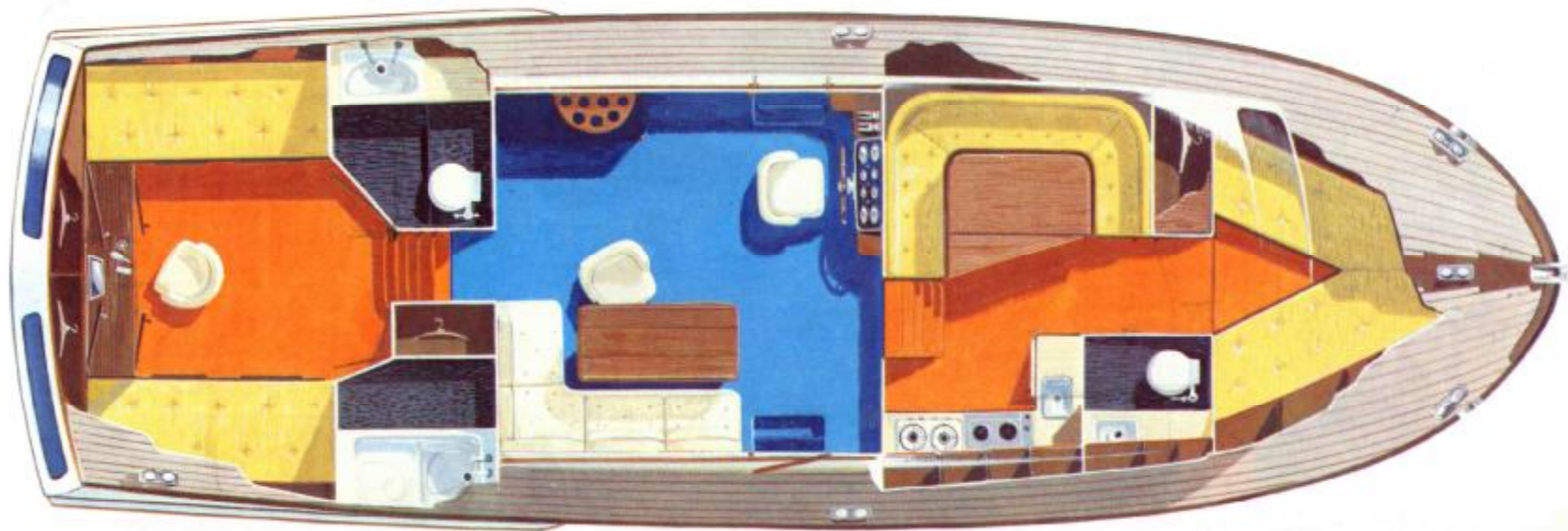
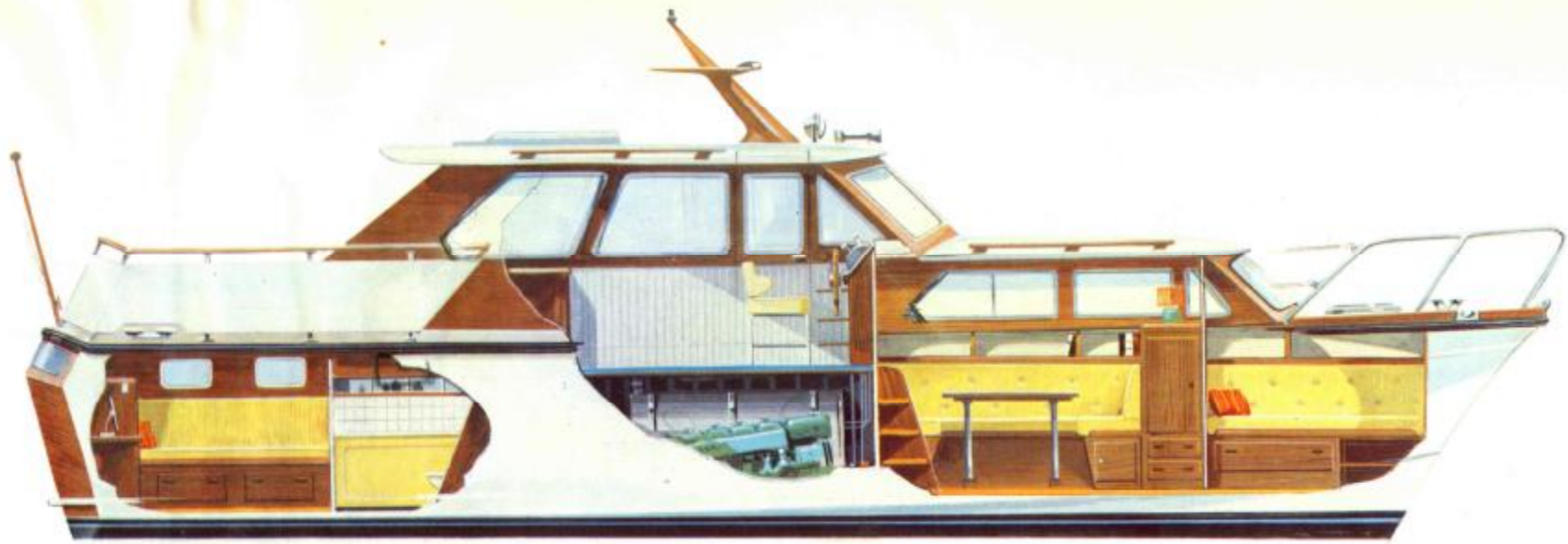
All floors (except the deck saloon) have close fitted carpets.

STANDARD EQUIPMENT

Two Volvo Penta diesels TAMD 70 C, 280 hp DIN each with mechanical bilge pumps. 4-bladed propellers. Stainless steel water tanks. Morse steering and controls. Fuel gauges. Five electric bilge pumps. Hot water system. Navigation lights to International standard. Electric 85 l. refrigerator. Safety glass throughout. Batteries. Boat hooks. Windscreen wipers. Helmsman's seat. Upholstery and mattresses in upholstered foam. Curtains and carpets (except deck saloon). Ensign staff and socket. Foam backed deckhead linings. Three pairs of mooring bollards. Fairleads forward.

SPECIFICATION

Length over all	12.980 m=42'7"
Beam	4.290 m=14'1"
Draft	1.11 m= 3'8"
Displacement	13.0 tons
Height above waterline ex. mast	3.20 m=10'6"
Freeboard:	
forward	1.71 m= 5'7"
aft	1.50 m=4'11"
Height:	
in cradle	4.40 m=14'5"
in deck saloon	1.99 m= 6'6"
in after cabin	1.85 m= 6'1"
in engine room	1.53 m= 5"
in forward saloon	2.03 m= 6'8"
in fore cabin	1.99 m= 6'6"
Fuel capacity	2×1000 l.=2×220 gallons
Fresh water capacity	2× 300 l.=2× 66 gallons
Number of berths	6
El. system	24 volt D.C.
Batteries	4×12 volt, 152 Ah each
Engines	Two Volvo Penta Diesel TAMD 70 C 280 hp DIN each
Speed	Approx. 19 knots
Builder	STOREBRO BRUKS AB
Designer	John Teale





STOREBRO BRUKS AKTIEBOLAG

S-590 83 STOREBRO, SWEDEN — TEL. 0492/301 60 — CABLE "STOREBROBRUK" VIMMERBY — TELEX 3943 STB S