

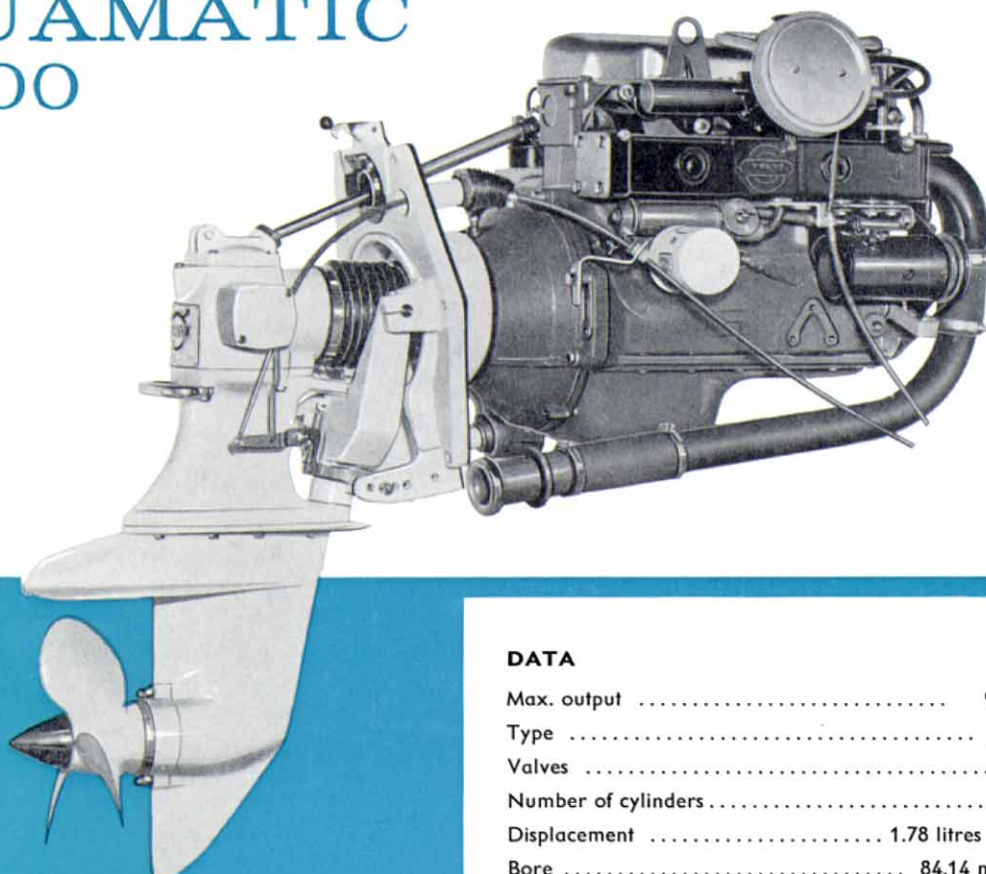


The Aquamatic 95/100 supplements the Volvo Penta inboard/outboard series with an output of 95 h.p. (SAE). The basic engine is the renowned Volvo four-cylinder, four-stroke unit of which more than 350,000 have been manufactured in one of the largest and most modern engine factories in Europe. More than 30,000 marine power units consisting of this engine in combination with the Volvo Penta outboard drive Model 100 have been produced — this resulting in a marine power pack with extremely high performance and running reliability.

Standard equipment includes: five-bearing crankshaft, overhead valves, one horizontal carburettor, 12 V electrical equipment, high-level location of starter motor and fully enclosed flywheel and dynamo to eliminate the risk of bilge water damage, cooling water pump fitted directly on the engine and driven from the camshaft through a flexible coupling, hyper-effective oil cooler and spin-on oil filter.

From the viewpoints of price and fuel consumption, the Aquamatic 95/100 is one of the most economical inboard/outboard units on the market suitable for the greater part of the range of motor boats in operation today.

VOLVO PENTA INBOARD ENGINE WITH OUTBOARD DRIVE AQUAMATIC 95/100



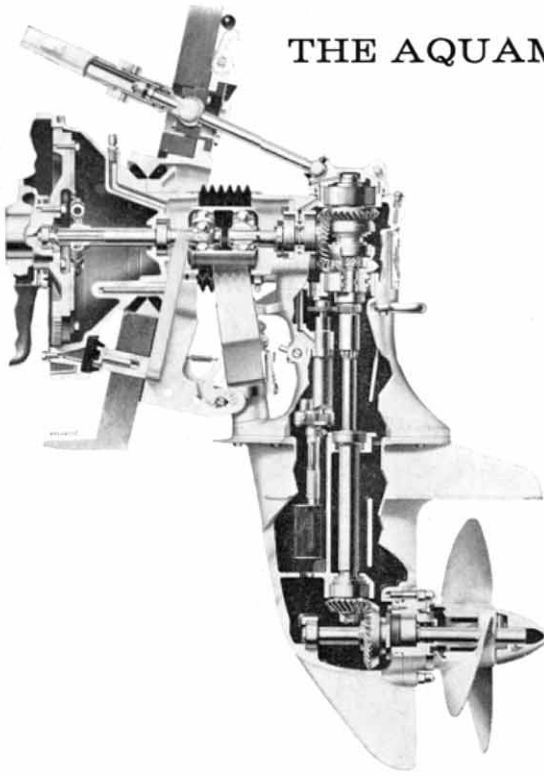
Standard equipment includes: Instrument panel with electric revolution counter, electric temperature gauge, warning lamps for charging and oil pressure.

DATA

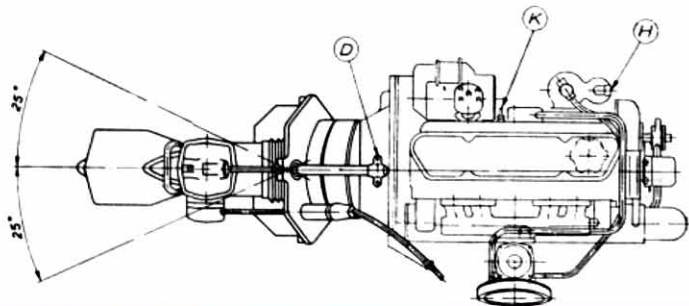
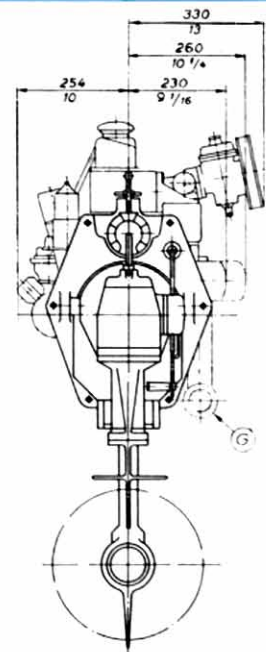
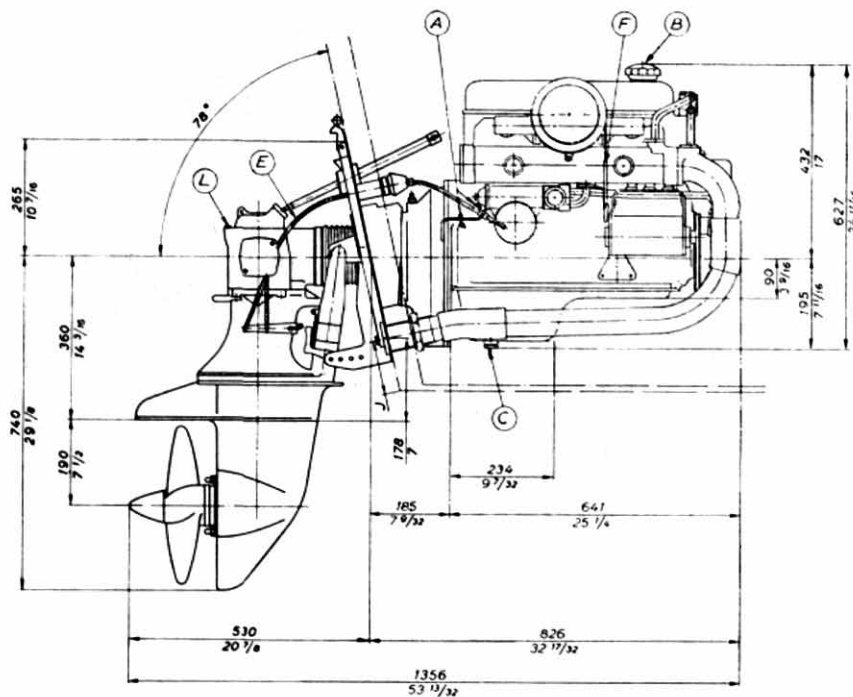
Max. output	95 h.p. SAE
Type	four-stroke
Valves	overhead
Number of cylinders	4
Displacement	1.78 litres (109 cu.in.)
Bore	84.14 mm (3.313")
Stroke	80 mm (3.15")
Compression ratio	10:1
Total weight	210 kg (465 lb.)

All the electrical cables are combined to form one single cable harness between the engine and the instrument panel with a plug-in connector about 1.5 m (5 ft.) from the engine — this facilitates installation to a great extent.

THE AQUAMATIC OUTBOARD DRIVE MODEL 100 - a well-tested outboard drive



The Volvo Penta outboard drive Model 100 has been delivered to the extent of more than 30,000 units which have been installed in widely varying types of boats all over the world. The O/D Model 100 has, as shown in the illustration, the Silent-Shift system — a patented cone clutch transmission made by Volvo Penta. Shifting is smooth, quiet and gentle. Power transmission is through the medium of a pressure-lubricated universal joint. The lubricating oil pump — which is of the gear type — runs even when outboard drive is in neutral position. The oil dipstick has a high-level location and permits checking and topping up without taking the boat out of the water. The drive tilts up to an angle of 60° and can be fitted with an electro-hydraulic lift system. An effective anti-corrosion ring of zinc is located between the propeller and the underwater housing. All the external bolts and polished sections are made of stainless steel. The O/D Model 100 in combination with a Volvo Penta engine makes up a unit that has been tested and used in practice many years longer than any other inboard/outboard.



- A Water drain
- B Oil filler
- C Oil drain
- D Connection for steering cable
- E Gear shift cable
- F Throttle cable
- G Exhaust outlet
- H Connection for fuel inlet, outer diam. $\frac{5}{16}$ "
- K Oil dipstick, engine
- L Oil dipstick, outboard unit

Dimensions in millimetres and inches



AB VOLVO PENTA

Box 392, Göteborg 1, Sweden
Tel. 235460 Cables: Penta
Telex: 20755