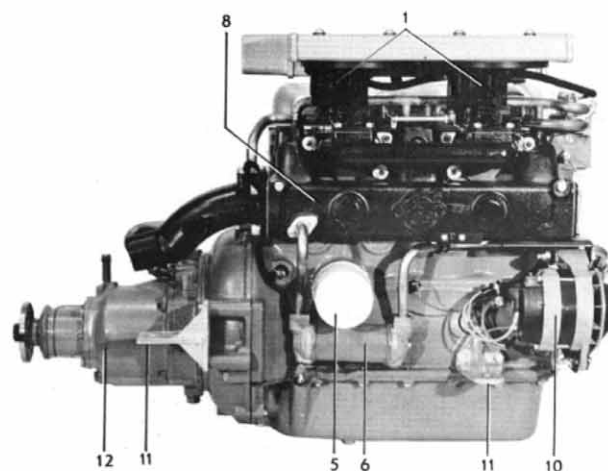
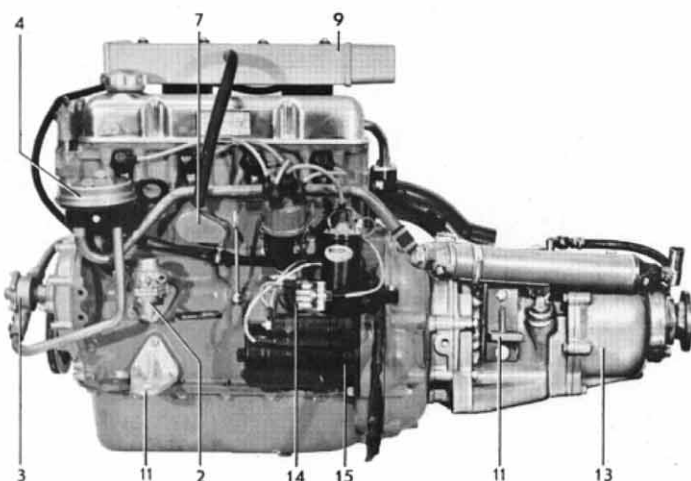




## BB 115 C



4-cylinder, 4-stroke carburetor engine  
Propeller shaft output 70 kW (95 hp)



### STANDARD EQUIPMENT

**ENGINE BODY** – Cylinder block and head made of special cast iron. Light-alloy pistons with 2 compression rings and one oil scraper ring. Crankshaft journalled in 5 bearings. Self-rotating, overhead valves.

A tool kit for minor adjustment is supplied.

**FUEL SYSTEM** – Double downdraft carburetors with acceleration pumps (1). Fuel pump (2) driven from camshaft, equipped with hand primer and flexible hose with fuel pipe connection.

**COOLING SYSTEM** – Thermostat-controlled sea-water cooling system. Sea-water pump with neoprene rubber impeller (3). Cleanable sea-water filter (4). Sea-water cooled RB reduction gear. BW type reverse gear has sea-water cooled oil cooler.

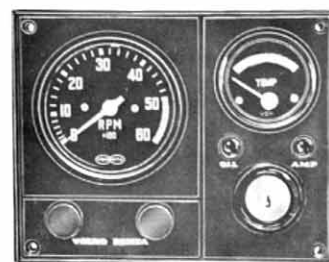
**LUBRICATING SYSTEM** – Pressure-lubricating system with full-flow lubricating oil filter of the spin-on type (5). Sealed crankcase ventilation (7). Cleanable, tubular-type oil cooler (6).

**INTAKE SYSTEM** – Silent Flow type intake silencer with built-in flame guard (9).

**EXHAUST SYSTEM** – Sea-water cooled exhaust manifold and manifold elbow of cast iron (8).

**ELECTRICAL SYSTEM** – Corrosionproof 12 V electrical system, with complete instrument panel. Main fusing mounted on engine with built-in spare fuses (14). Brushless alternator with built-in transistor regulator, 35 A, 420 W (10). Starter motor output 735 W (1 h.p.) (15).

Instrument panel is provided with key switch, rev counter, temperature gauge, warning lamps for battery charging and oil pressure, switch for instrument lighting and one extra switch. Cable harness, 7 m (23 ft.) in length, with plug-in contact.



**ENGINE MOUNTING** – The engine is supplied with engine brackets for fixed suspension (11).

**POWER TRANSMISSION** – Mechanical reverse gear type RB or hydraulic type Borg Warner. Engine speed and reverse gear on type BW is operated by a single control lever. Bracket for control cables included.

Engine is supplied with reverse gear as follows:

Alt. 1 Rev. gear type RB red. ratio 1.91:1, L-H prop. (12)

2 Rev. gear type BW red. ratio 2:1, R-H prop. (13)

3 Rev. gear type BW red. ratio 2:1, L-H prop. (13)

4 Rev. gear type BW red. ratio 2.9:1, L-H prop (13)

Propeller shaft flange for 30 mm propeller shaft – red. ratios 1.91:1 and 2:1

Propeller shaft flange for 35 mm propeller shaft – red. ratio 2.9:1

## EXTRA EQUIPMENT

### FUEL SYSTEM

Water-separating filter with or without flexible hoses.  
 Water separator  
 Fuel line kit with piping and installation parts.  
 Electrically operated fuel pump.  
 Cap with connections for fuel tank.

### COOLING SYSTEM

Cooling water intake complete with cock and hose.

### EXHAUST SYSTEM

Through - hull fitting  
 Rubber exhaust hose  
 Connection flanges for exhaust line

### ELECTRICAL SYSTEM AND INSTRUMENT

Charging distributor for charging 2-battery system  
 Extra instruments: Hourmeter, fuel- and water gauge, voltmeter oil pressure gauge, rudder indicator  
 Master switch  
 Cable harness extension  
 Instrument panel for extra instruments  
 Automatic alarm for oil pressure and water temperature

### ENGINE MOUNTING

Flexible engine mounting

### BOAT ACCESSORIES

Electrically operated bilge pump  
 Original paint  
 Oils  
 Electro-mechanical trim tabs  
 On board kits

### CONTROLS AND CONTROL SYSTEM

VP single-control lever for both speed and forward-reverse operation, top-mounted or side-mounted.  
 Two levers control - side mounted  
 Control cables  
 Steering gears  
 Steering wheel  
 Steering lock  
 Steering cables  
 Ball joint and fork kit for steering cable

### PROPELLER EQUIPMENT

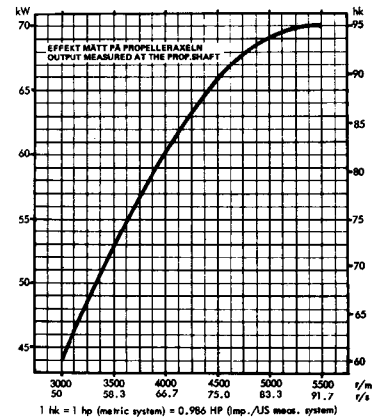
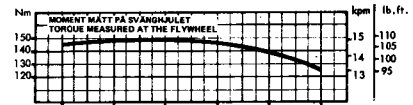
Flexible coupling  
 Clamp coupling  
 Propeller shafts  
 Propeller shaft sleeves  
 Propellers

## DATA

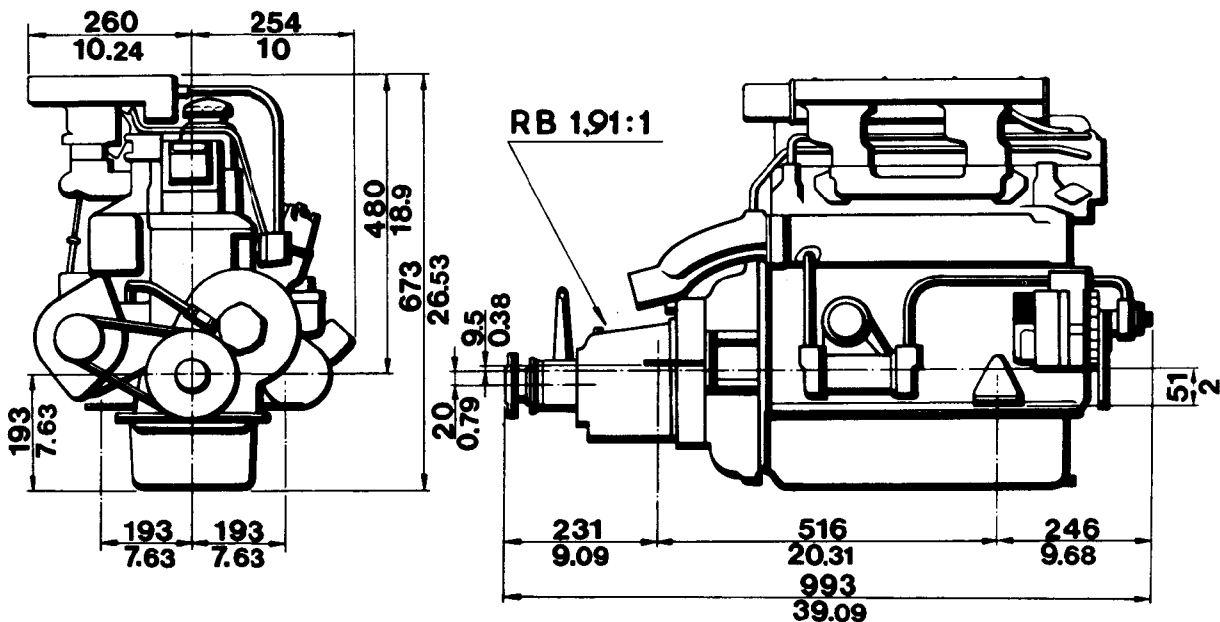
Type of operation	4-stroke carburetor engine with overhead valves
Designation	BB115C
Propeller shaft output <sup>1)</sup>	70 kW (95 hp)
Max. operating speed, r/s (rpm)	91.7 (5500)
Number of cylinders	4 in-line
Capacity, dm <sup>3</sup> (in <sup>3</sup> )	1.986 (121)
Bore/Stroke, mm (in)	88.9/80 (3.50/3.15)
Compression ratio	8.4:1
Fuel quality <sup>2)</sup>	min. 87 octane
Total weight, engine with RB reverse gear, appr. kg (lb)	215 (475)

1) The diagram indicates the propeller shaft output for a run-in engine with mechanical reverse gear according to DIN 6270 Leistung B. The engine flywheel output is approx. 3% higher. To calculate the propeller shaft output with a hydraulic reverse gear type BW, reduce the indicated output by 16% at maximum speed.

2) The engine can be run on unleaded fuel.



## DIMENSION DRAWING



**AB VOLVO PENTA**

S 405 08 Gothenburg, Sweden  
 Telephone: 031/23 54 60  
 Telegrams: Penta  
 Telex: 207 55

We reserve the right to carry out modifications

