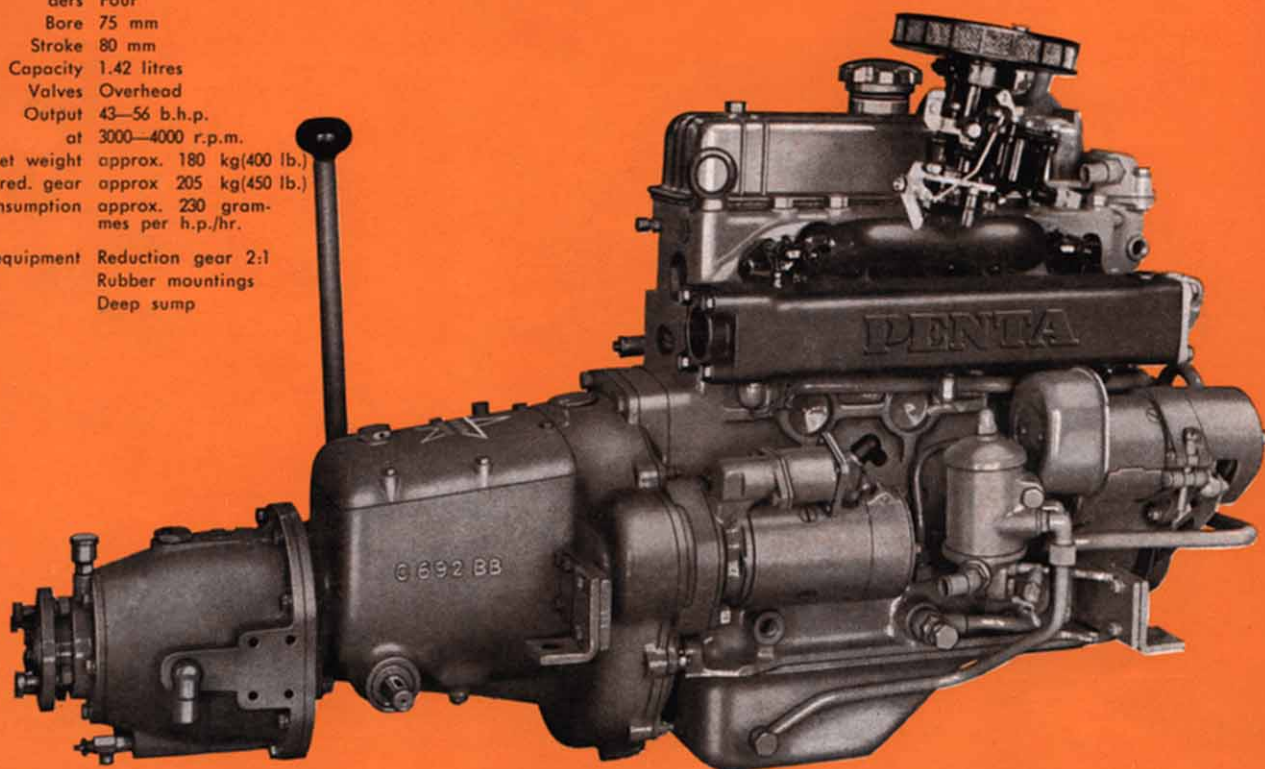


Technical information

Type	Four-stroke
Number of cylinders	Four
Bore	75 mm
Stroke	80 mm
Capacity	1.42 litres
Valves	Overhead
Output	43—56 b.h.p. at 3000—4000 r.p.m.
Net weight	approx. 180 kg(400 lb.)
with red. gear	approx. 205 kg(450 lb.)
Fuel consumption	approx. 230 grammes per h.p./hr.
Extra equipment	Reduction gear 2:1 Rubber mountings Deep sump



BB 50 a light-weight, high-output sports engine

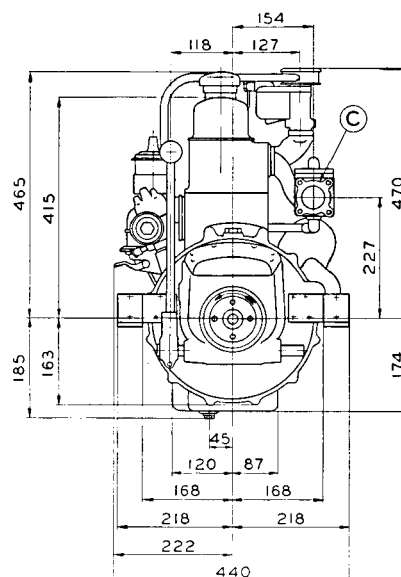
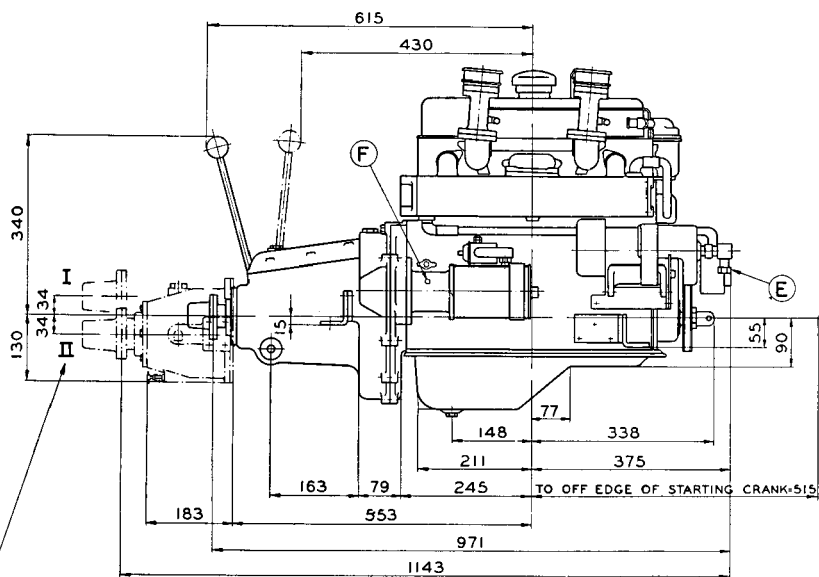
The high output of the BB 50 — 56 b.h.p. att 4000 r.p.m. — compared with its low weight — about 180 kg (400 lb.) — makes it particularly suitable for use in light-weight speedy boats. The BB 50 fitted with a reduction gear 2:1 gives a boat the speed and pulling power that is so essential for water ski-ing etc.

Equipment includes a down-draught carburetter, oil cooler, full-flow oil filter, 6-volt electric starter and dynamo as well as an instrument panel fitted with the following: revolution counter, oil pressure gauge, water temperature gauge, starter button, ignition switch with key, charging control light, choke control and indirect lighting.

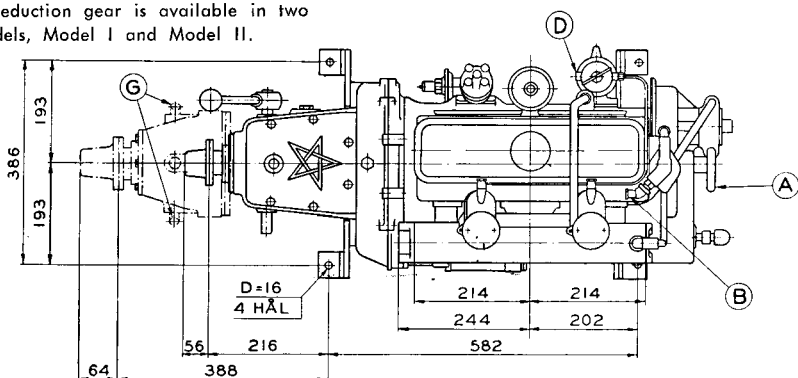
The engine has automatic cooling water temperature control by means of a thermostat ensuring the correct operating temperature under all conditions of loading.



Dimensions of the BB 50 (shown in millimetres)

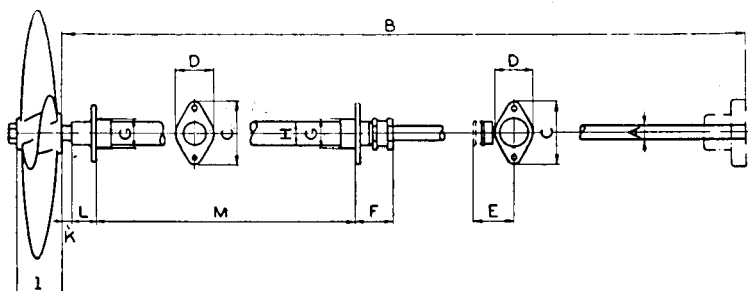


A reduction gear is available in two models, Model I and Model II.



- A. KYLVATTENINLOPP, SLANGFASTE FÖR 5/8" SLANG
COOLING WATER INLET FOR RUBBER HOSE 5/8"
- B. KYLVATTENAVLOPP, SLANGFASTE FÖR 5/8" SLANG
COOLING WATER OUTLET FOR RUBBER HOSE 5/8"
- C. CASAVLOPP 1 1/2" RÖR
EXHAUST OUTLET 1 1/2" PIPE TAP
- D. BRÄNSLEINLOPP, KOPPARRÖR UTV DIAM 5/16"
FUEL INLET COPPER PIPE OUTER DIA 5/16"
- E. ANSLUTNING FÖR VARVRÄKNARE
TACHOMETER CONNECTION
- F. ANSLUTNING FÖR MANOMETER
OIL PRESSURE GAUGE CONNECTION
- G. KYLVATTENANSLUTNING, SLANGFASTE FÖR 5/8" SLANG
COOLING WATER CONNECTION, RUBBER HOSE 5/8"

These drawings show the engine fitted with twin down-draught carburetters but also apply to the new model with one carburetter.



**Propeller
equipment for the BB 50
with bronze or
stainless steel shaft**

Reduction	A	B	C	D	E	F	G	H	I	K	L	M
1:1	25	2000	90	58	70	75	42	34	64	ca 15	37	1000
2:1	30	2000	120	62	76	80	50	40	78	ca 15	50	1500