

VOLVO PENTA

MD 2B



Volvo Penta MD 2 B is a 2-cylinder, 4-stroke marine diesel engine with direct injection. The exceptionally compact outer dimensions and the considerably powerful propeller thrust make the engine specially suitable for installation in small fishing boats, work boats, pleasure boats and as an auxiliary unit in sailing craft.

MD 2 B is a further development of the well-known MD 2 engine. It has many components in common with MD 1 B and MD 3 B, which gives special advantages from the viewpoint of service and parts supply.

Direct injection ensures immediate starting on diesel fuel oil without any preheating, for example, with glow plugs.

The MD 2 B is very economical. To a great extent this is due to the effective design of the combustion chamber and also to the fact that the fuel injection pump is fitted with a centrifugal-type governor, which always supplies the engine with the correct fuel quantity for the varying loads and speeds.

MD 2 B is delivered with the easy operating "Mono-Shift" reverse gear which requires specially small forces.

The reverse gear is built on the cone clutch in the wellknown aquamatic drives. Both speed and reverse gear are operated with the same control lever e.g. "fingertip control".

The engine is supplied with the following alternative equipment:

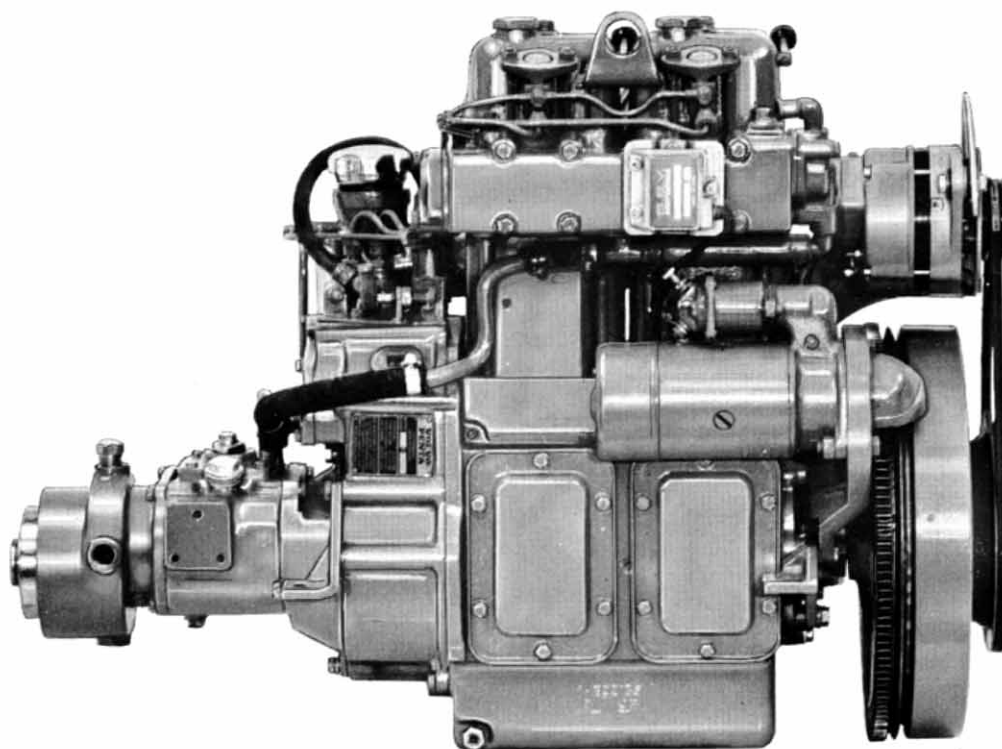
1. With manual start and reduction/reverse gear type RB ratio 1.87:1.
2. With starter-generator and reduction/reverse gear type RB ratio 1.87:1.
3. With starter motor, alternator and reduction/reverse gear type MS ratio 1.91:1.
4. With starter generator and reduction/reverse gear type RB ratio 3.42:1.

Here are some of the outstanding features included in the standard equipment:

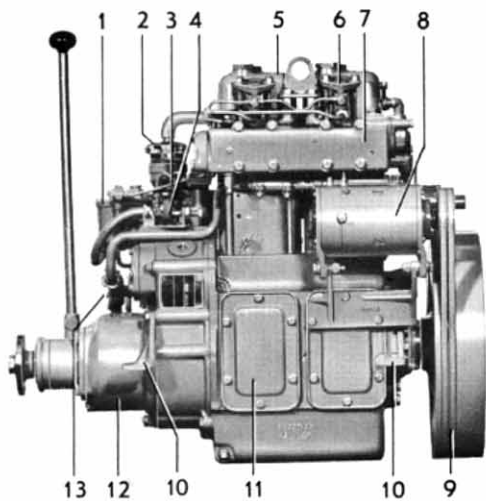
- Feed pump with hand primer for fuel and with effective fuel filter. This makes it possible to locate the fuel tank lower than the engine.
- Built in injection pump with all speed governor for accurate speed governing. The governor requires only small manoeuvre forces from the speed control.
- Full-flow lubricating oil filter of the "Spin-On" type — easy to change.
- Thermostat-controlled cooling system means that the engine always runs at its most favourable operating temperature. Sea-water pump with an impeller made of neoprene rubber.
- Effective intake silencer.
- Decompression device and raised hand starter facilitate manual starting and the cold starting device also provides easy starting in cold weather.

VOLVO PENTA
2-cylinder, 4-stroke
marine diesel engine
with direct injection

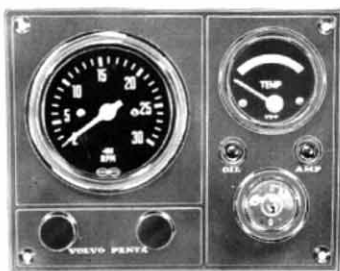
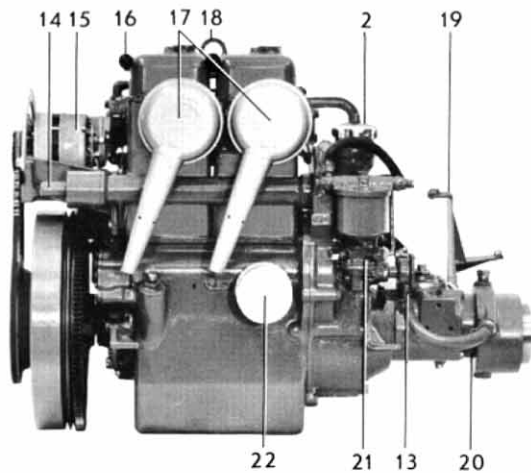
25 h.p.



VOLVO PENTA MARINE DIESEL ENGINE TYPE MD 2B



1. Fuel filter
2. Filler cap for oil
3. Fuel injection pump
4. Speed control
5. Rocker arm casing
6. Injector
7. Water-cooled exhaust manifold
8. Starter generator (only engines with elec. equipment)
9. Flywheel
10. Engine mounting
11. Inspection cover
12. Reduction/reverse gear type RB (ratio 1.87:1)
13. Sea-water pump
14. Hand start shaft
15. Alternator (included as standard on engines with MS Red/reverse gear)
16. Decompression device
17. Air silencer
18. Lifting eyelet
19. Bracket for manoeuvring cables
20. Reduction/reverse gear type MS (ratio 1.91:1)
21. Feed pump
22. Spin on oil filter



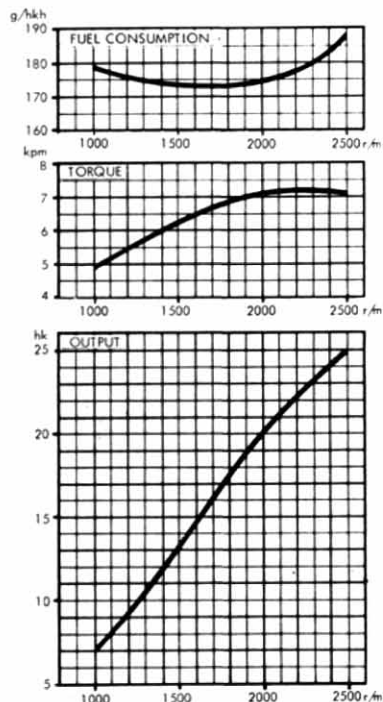
Instrument panel is included as standard on elec. equipped engines

EXTRA EQUIPMENT

Water-cooled exhaust elbow
Flexible engine mounting
Flexible propeller shaft coupling
Fuel tank
Pulley
Water-cooled exhaust pipe
Dry exhaust pipe

Bottom connection parts
Alternator 12V-38A
Remote control cold-starting control
Elec. bilge pump
Propellers, shafts and sleeves
Controls and cables
Water separator for fuel
Elevated hand start

ENGINE DIAGRAM



1) Outputs according to DIN 6270
Leistung B

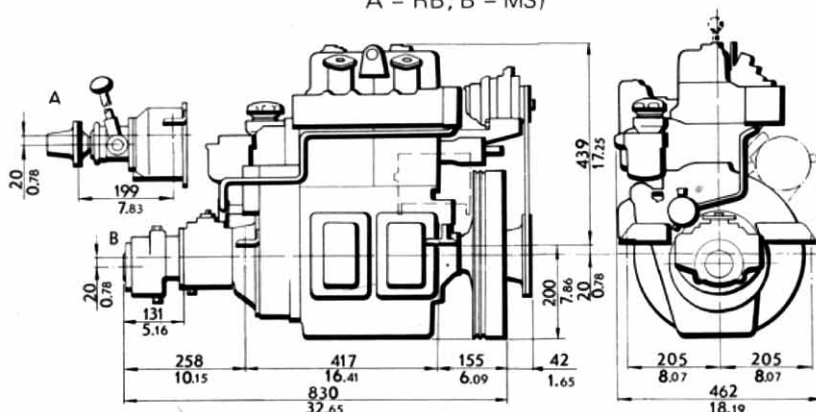
We reserve the right to carry out modifications

DATA

Operation: 4-stroke diesel with direct injection

Continuous output, h.p. (DIN) ¹⁾ at r.p.m.	25/2500
Max. torque kpm (lb.ft.)/r.p.m.	7.2 (52)/2000
Bore, mm (in.)	88.9 (3.5)
Stroke, mm (in.)	90 (3.54)
Capacity, cm ³ (cu.in)	1120 (68.4)
Valves	Overhead
Compression ratio	17.5:1
Max. inclination while running	15°
Net weight, including reduction/reverse gear, approx. kg (lb.)	220 (485)

DIMENSION DRAWINGS (engine with reduction/reverse gear A = RB; B = MS)



AB VOLVO PENTA

Box 392, S-401 26 Göteborg 1, Sweden

Tel: 23 54 60

Telegram: Penta

Telex: 207 55