

reckon  
on economy  
when you  
buy a boat  
engine



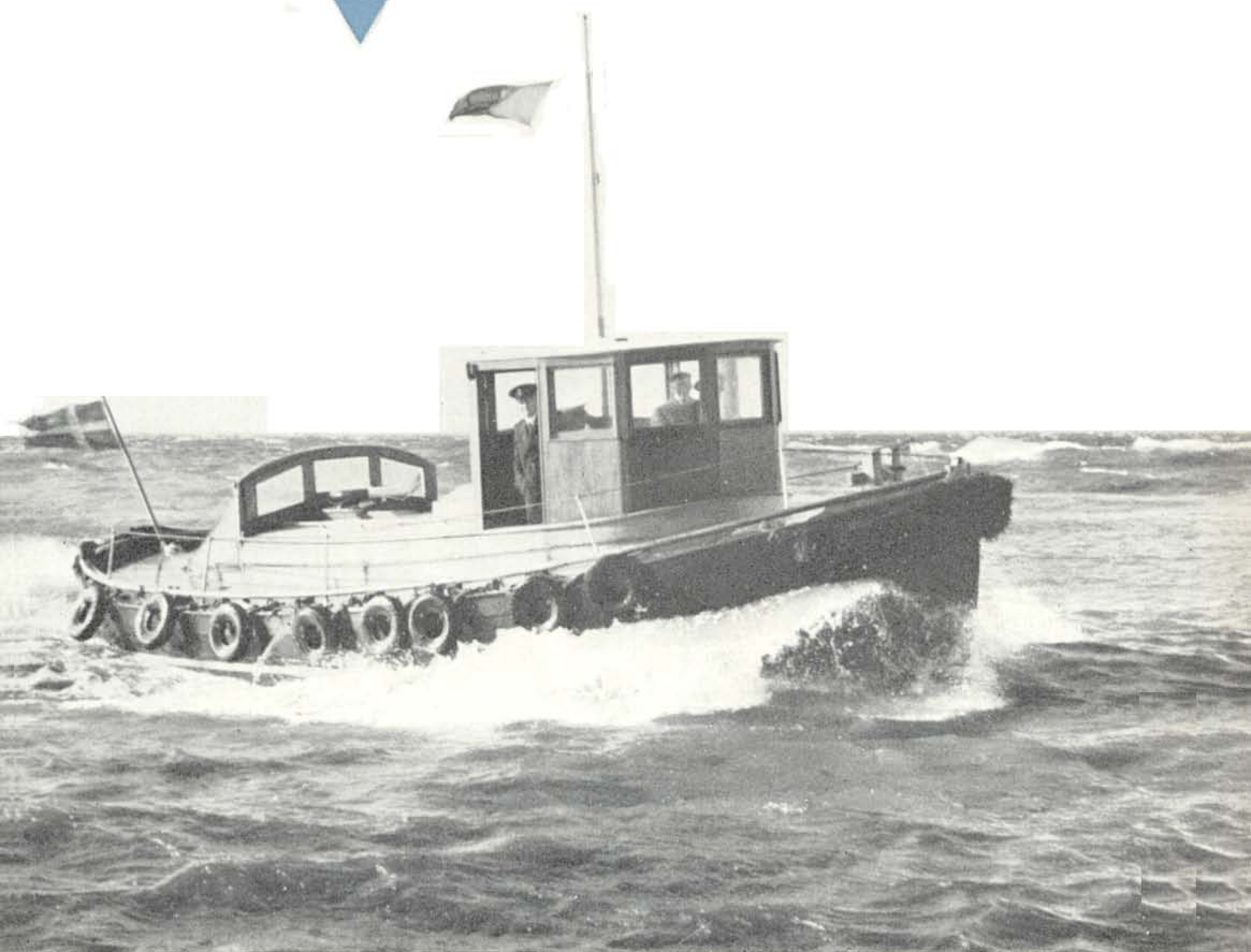
count  
on a





# **PENTA MARINE ENGINES**

**Petrol  
Paraffin  
Diesel**





As a discerning boatowner you naturally demand the highest quality for the equipment of your boat. When deciding on the installation you make it a point of collecting all information about the engine and studying it in detail.

It is, unfortunately, not possible for us to describe all our engines in detail in such a small brochure as this. We just want to show you that our production range includes an engine for every type of boat — the small motor boat you use for fishing and bathing in the summer, the more robust cruiser, or the various types of commercial craft which need powerful reliable engines.

Which of these engines is most suitable for your boat? It is impossible for us to say without knowing anything at all about your particular boat but if you would please send us details on the attached form we will give you advice and information concerning the most suitable equipment. At the same time, we will supply you with a detailed description of the engine and propeller equipment we propose.

We are always at your service with information to help you to get the best out of your boat, both now and in the future.

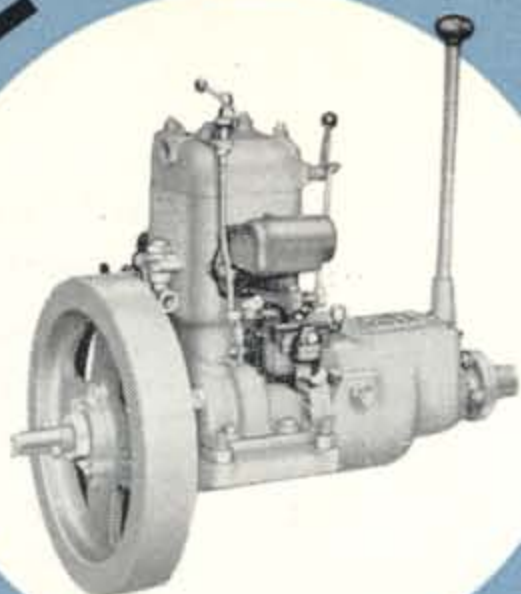
AKTIEBOLAGET

**PENTA**

GOTHENBURG

SWEDEN

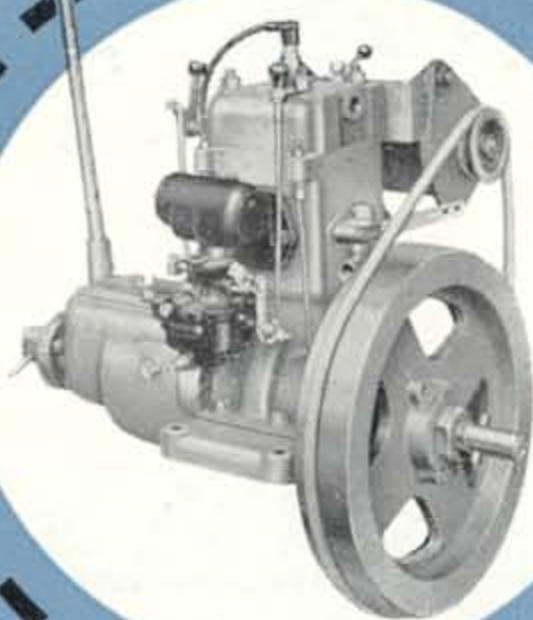
# PENTA MARINE ENGINE F12



Standard equipment includes a starter handle.



Raised chain starter can be fitted, and arranged in the most convenient position.



Dyna-start is available, if desired, e.g. when the engine is used as an auxiliary in a sailing yacht.

A robust and reliable engine with low maintenance costs. Is easy to operate and runs equally well on petrol or paraffin, no adjustment being necessary for the change-over.

The F 12 is very suitable for smaller fishing boats, launches or pleasure boats.

An ideal auxiliary for sailing craft.

## D A T A

Max. output ..... 5½ b.h.p.

Cylinder capacity ..... 600 c.c.

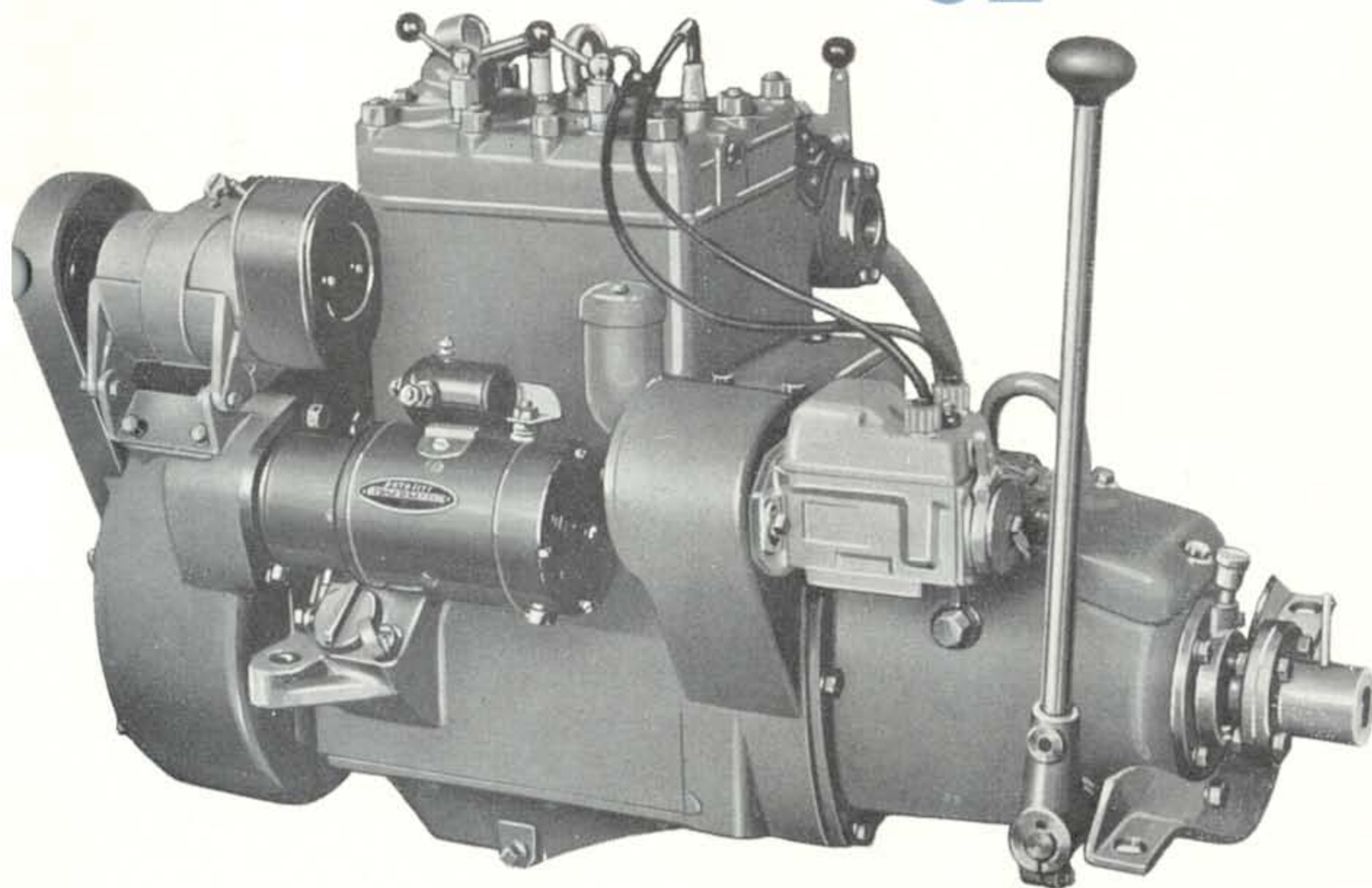
Number of cylinders ..... 1

Nett weight ..... about 85 kg.  
(187 lb.)





# PENTA MARINE ENGINE C2



The ideal engine for the smaller cabin cruiser and other medium-size boats. Particularly suitable as an auxiliary.

The C2 is fitted with chain starting, replaceable cylinder liners and a thermostatically controlled cooling system.

The engine can also be equipped for operating on paraffin in addition to other optional extras such as electric starting and reduction gear.

## DATA

Marine output range . . . . . 7—11 b.h.p.

Cylinder capacity . . . . . 1 litre

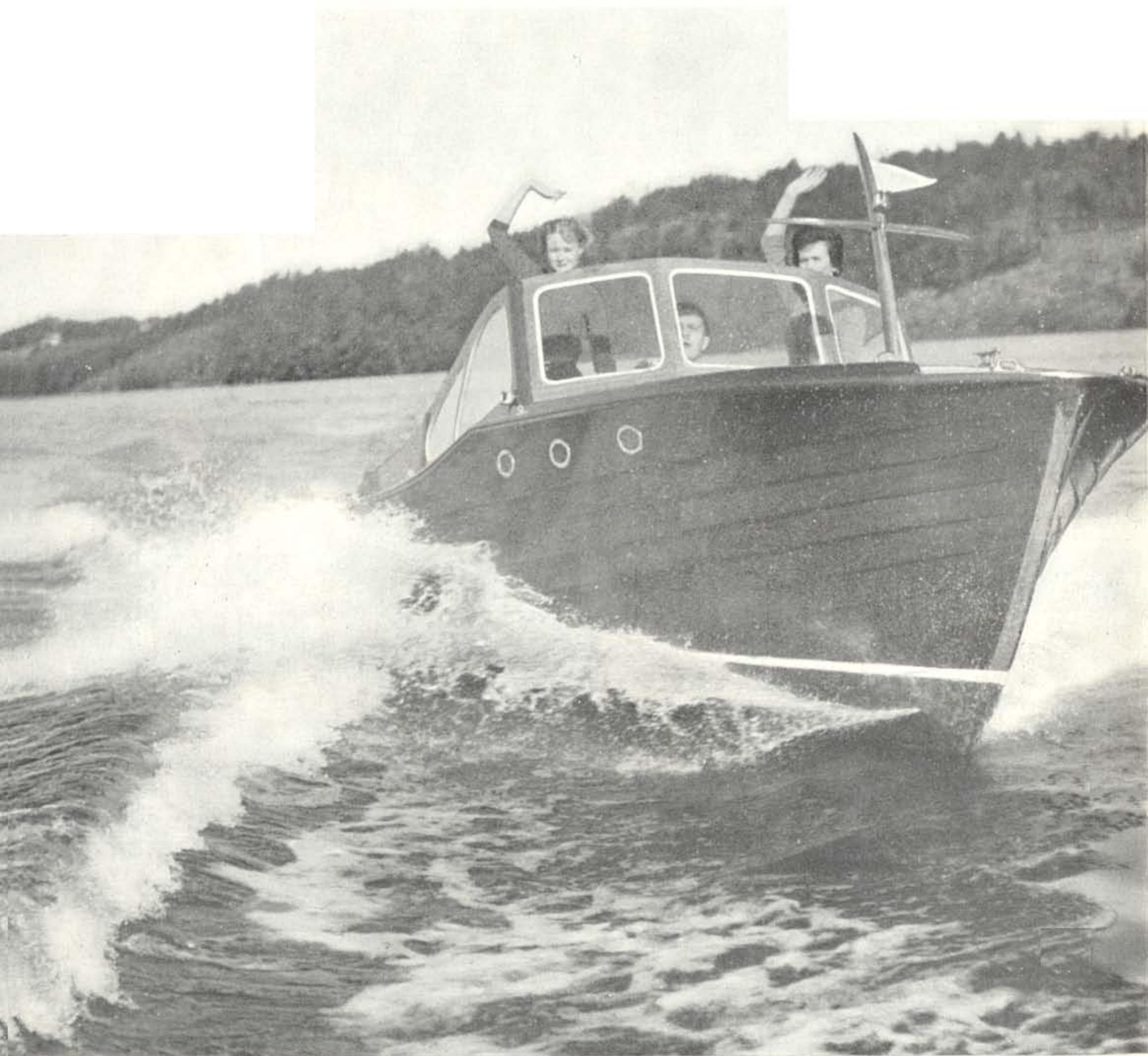
Number of cylinders . . . . . 2

Nett weight . . . . . about 155 kg.  
(340 lb.)





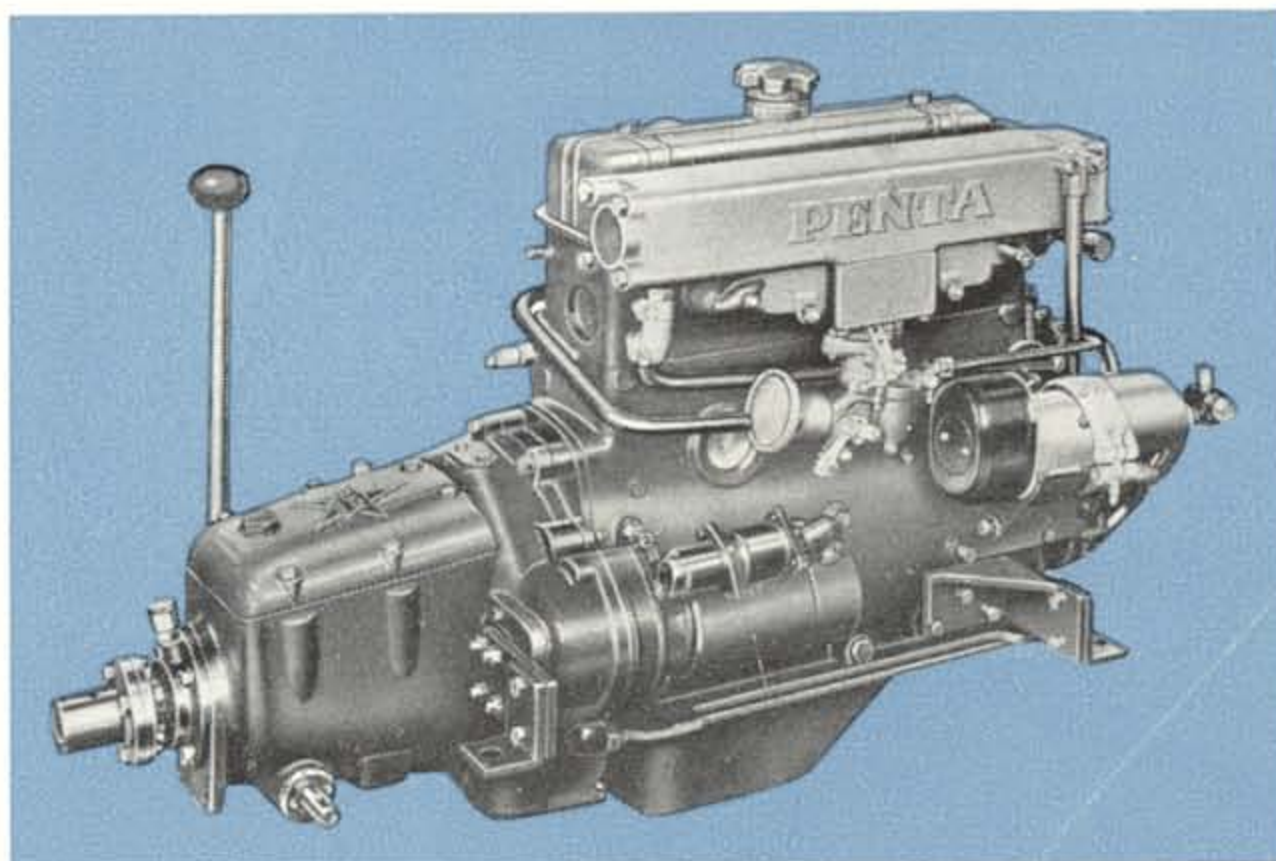
**PENTA**  
**MARINE ENGINES**  
**BB 41 BB 43**



## BB 41

The engine to suit the fast runabout or utility boat.

It has also proved itself to be a reliable and economical engine for the comparatively heavy pleasure or commercial craft.

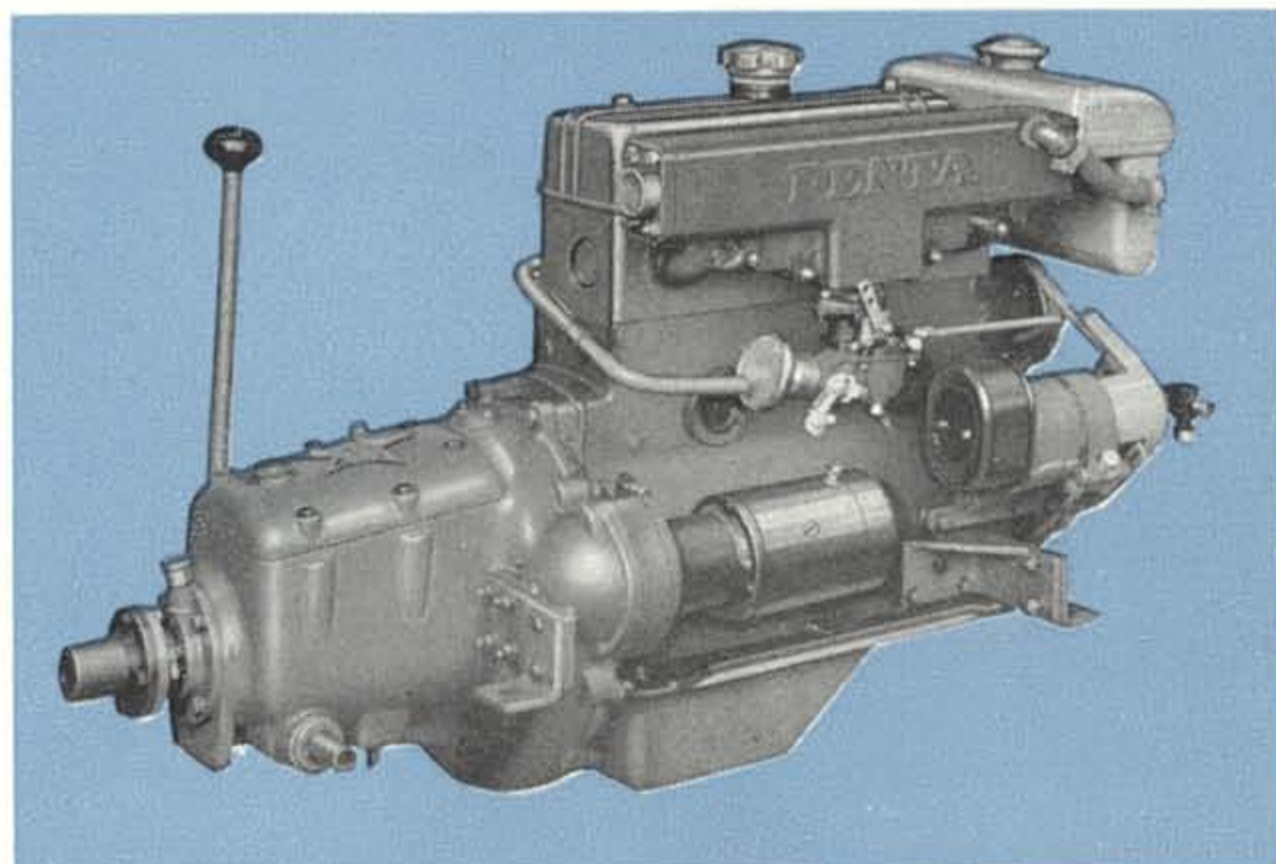


## BB 43

Exactly the same performance as BB 41. A fresh-water cooling system is fitted on the BB 43.

### DATA

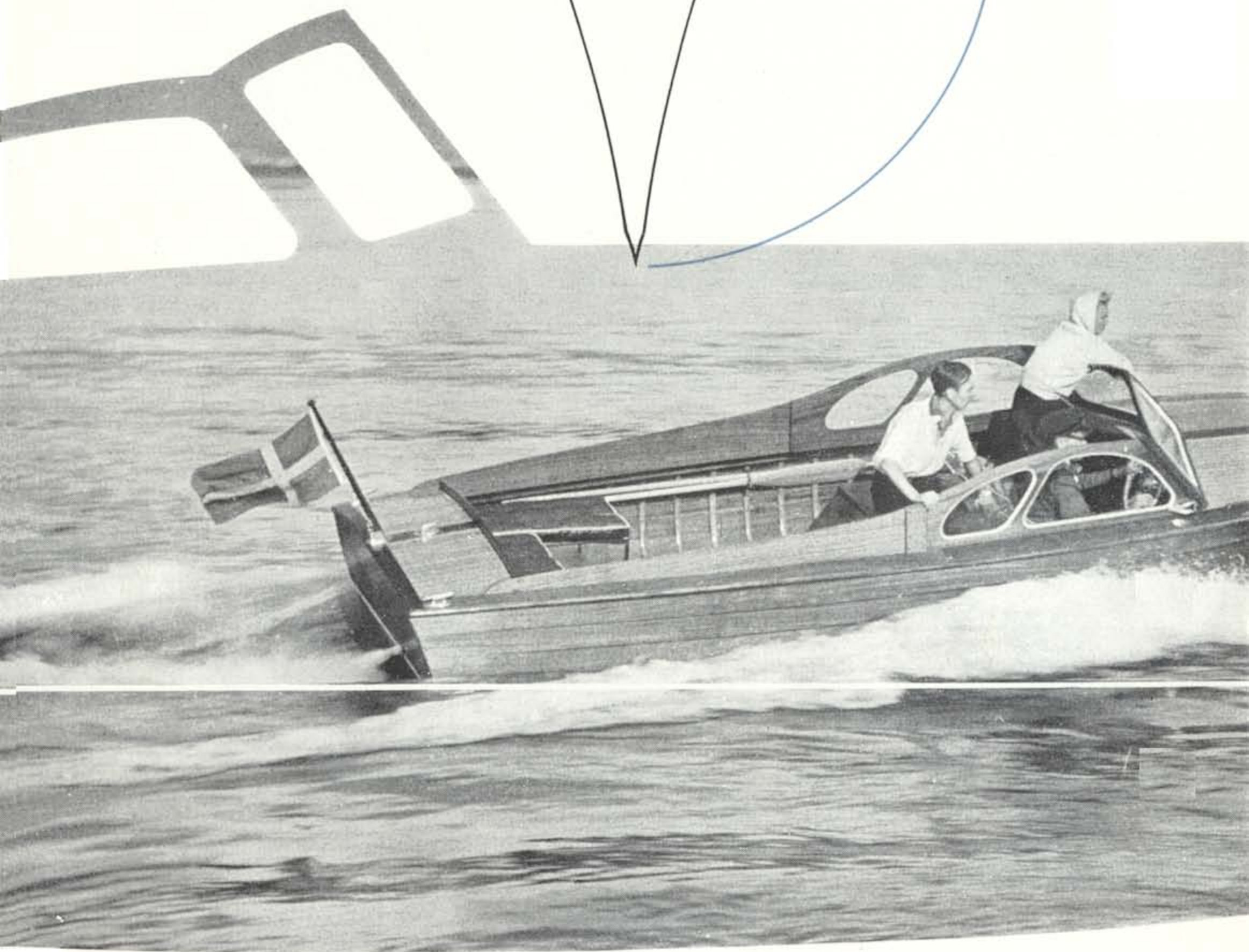
Marine output range .....	16—35 b.h.p.
Cylinder capacity .....	1,42 litres
Number of cylinders .....	4
Nett weight .....	about 185 kg (410 lb.)



*N*

**With course set for**

**higher speeds...**

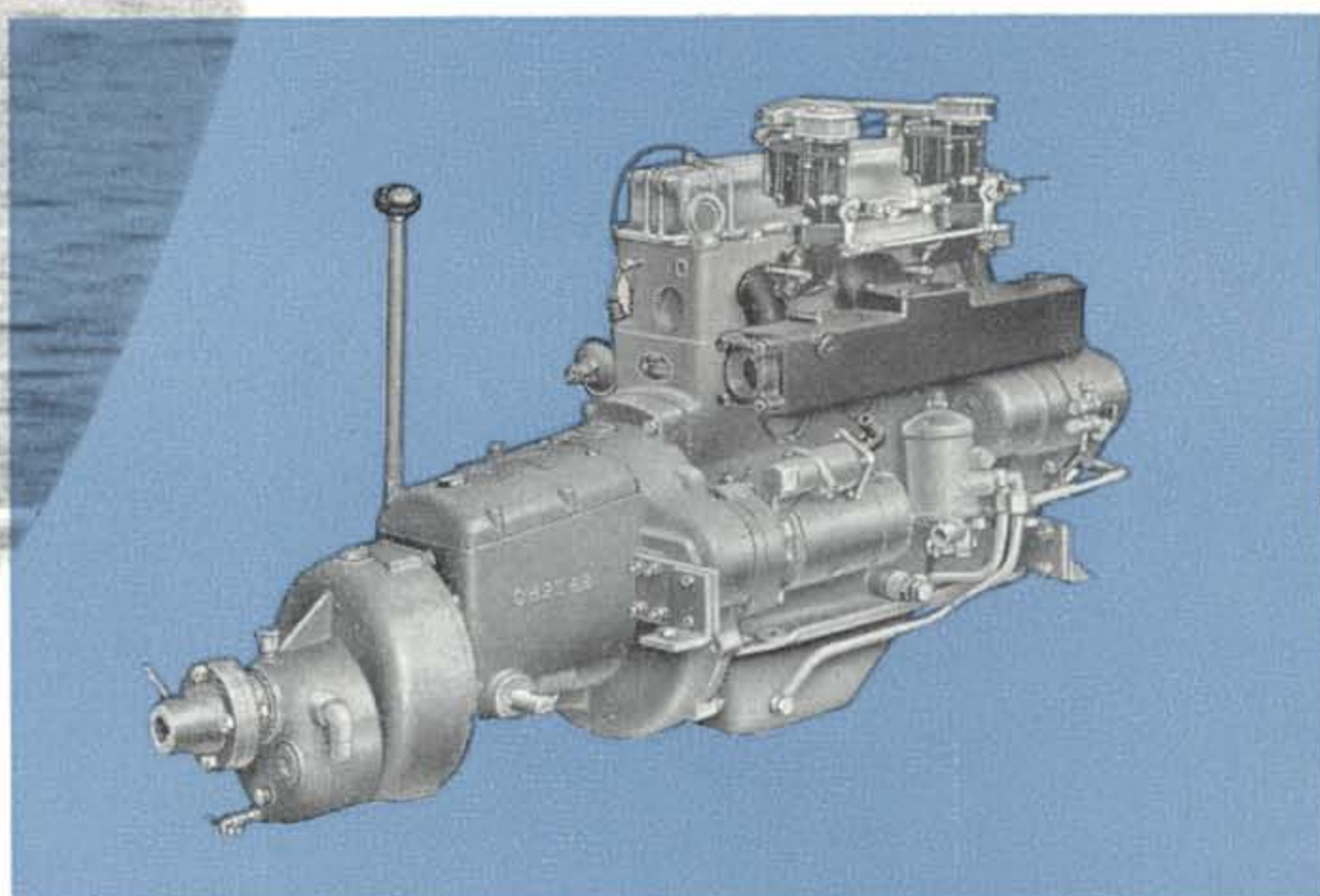
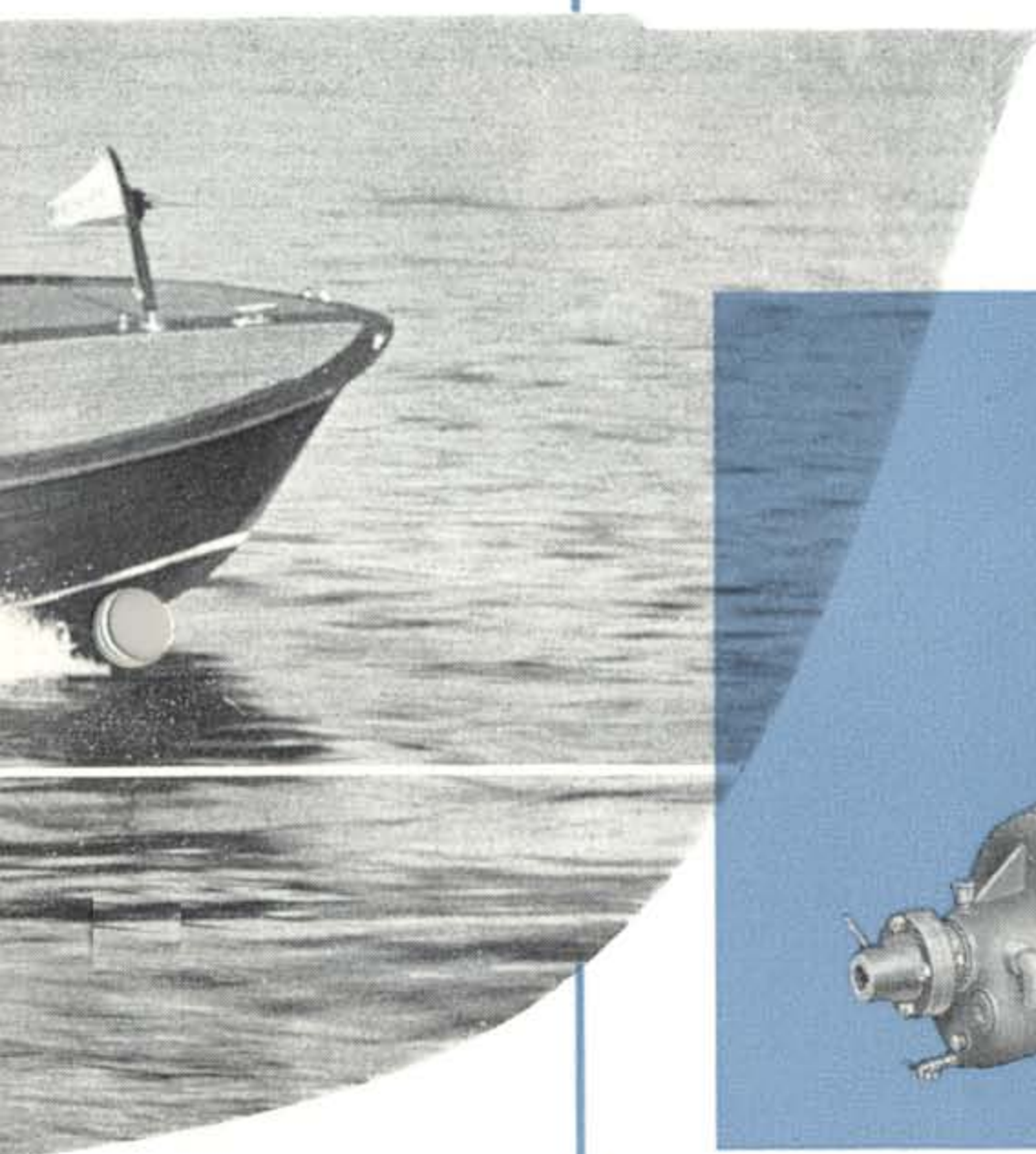


# PENTA MARINE ENGINE BB 50

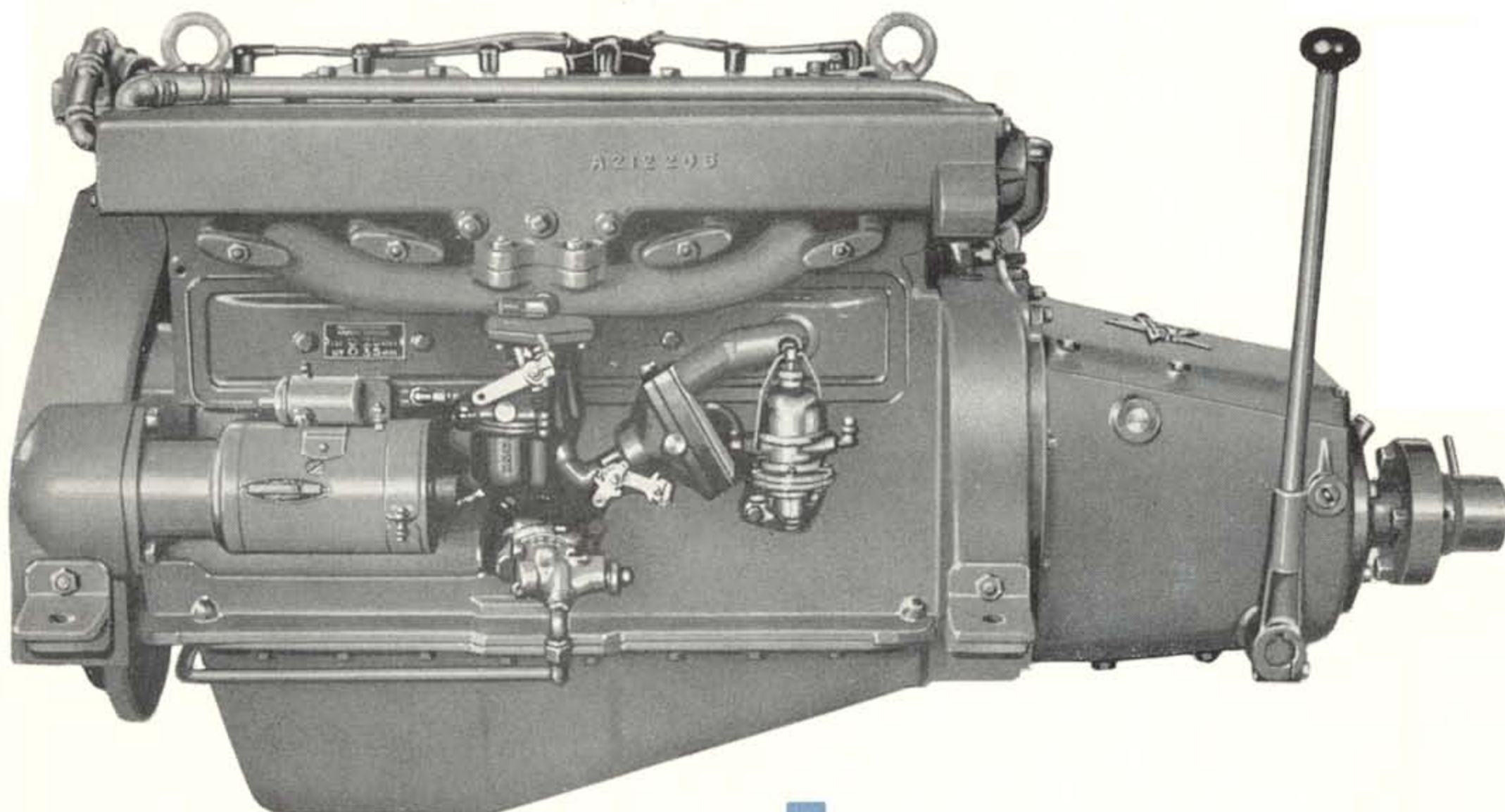
This powerful and light sports engine is the ideal unit for the fast runabout or speed boat. It has proved itself to be economical in operation and cheap in maintenance and has been chosen as a standard engine by many producers of small speed craft.

## D A T A

Output	..... 50 b.h.p.
Cylinder capacity	..... 1,42 litres
Number of cylinders	..... 4
Nett weight	..... about 185 kg. (408 lb.)
With reduction gear	..... about 205 kg. (450 lb.)



# PENTA MARINE ENGINE ED 6



Smooth, even running is a characteristic of the ED 6, which operates equally well on petrol or paraffin.

It is suitable for the fast type of craft and, fitted with reduction gear, is ideal for cruisers and other heavier boats.

#### D A T A

Marine output range . . . . 30—84 b.h.p.

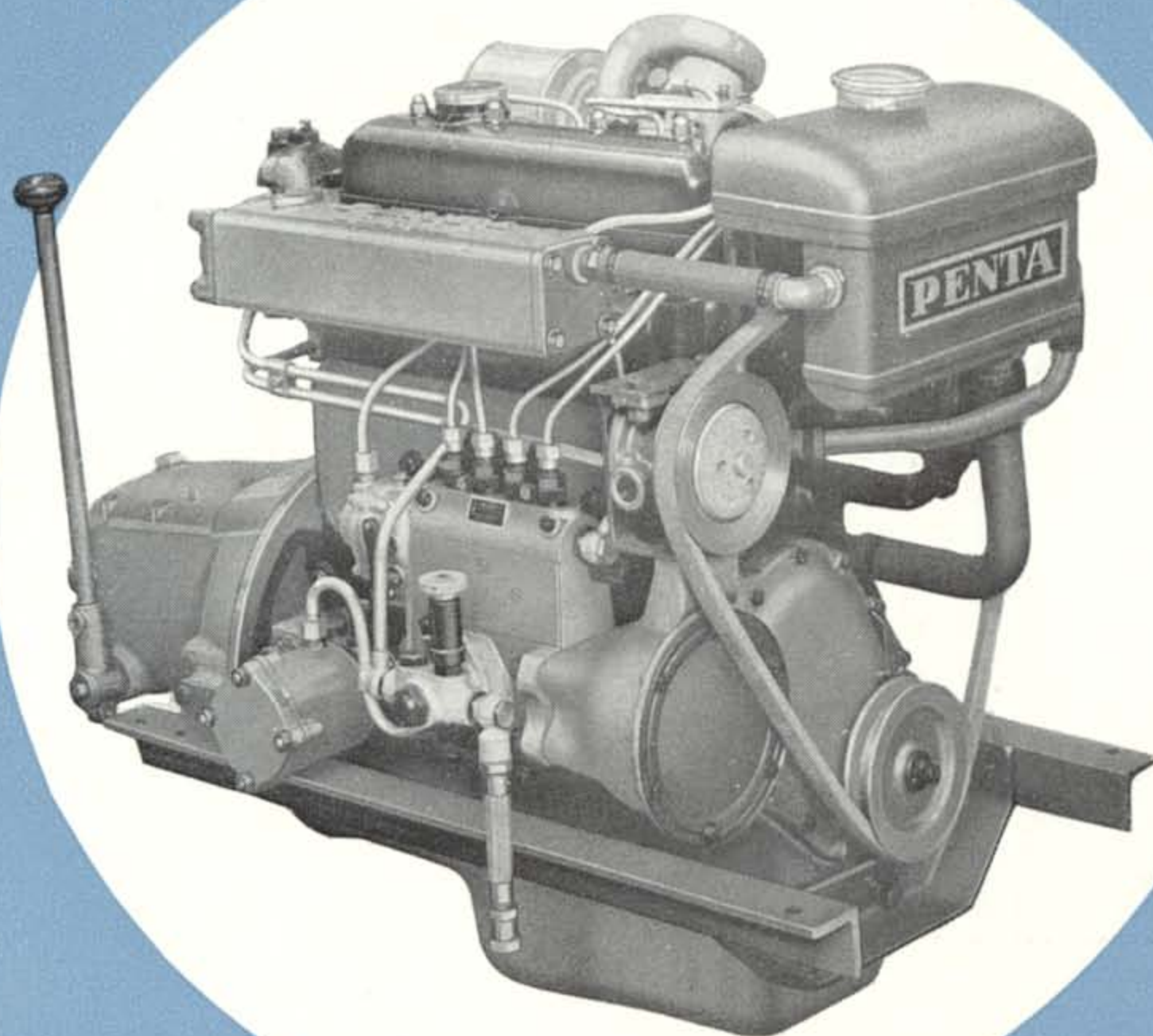
Cylinder capacity . . . . . 3,67 litres

Number of cylinders . . . . 6

Nett weight . . . . . 370 kg. (815 lb.)



# PENTA MARINE DIESEL ENGINE MD 4



One of the lightest and most compact Diesel engines of comparative power on the market. It is fitted with fresh-water cooling and is ideal for the cabin cruiser or light commercial craft.

A reduction gear ratio 2:1 can be supplied.

## DATA

Marine output range . . . . . 19—30 b.h.p.

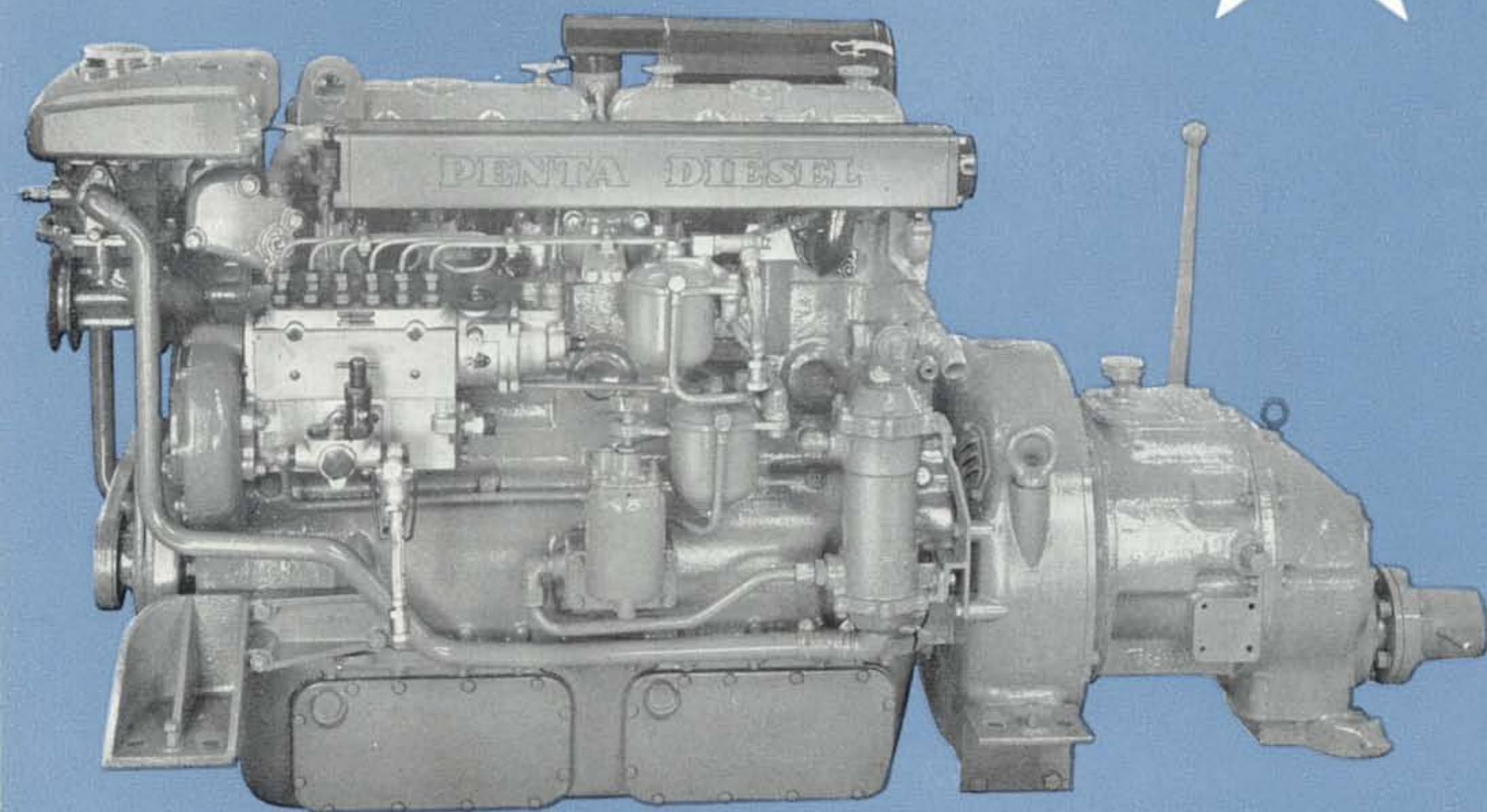
Cylinder capacity . . . . . 1,76 litres

Number of cylinders . . . . . 4

Nett weight ca . . . . . 230 kg. (510 lb.)



# PENTA MARINE DIESEL ENGINE MD 47

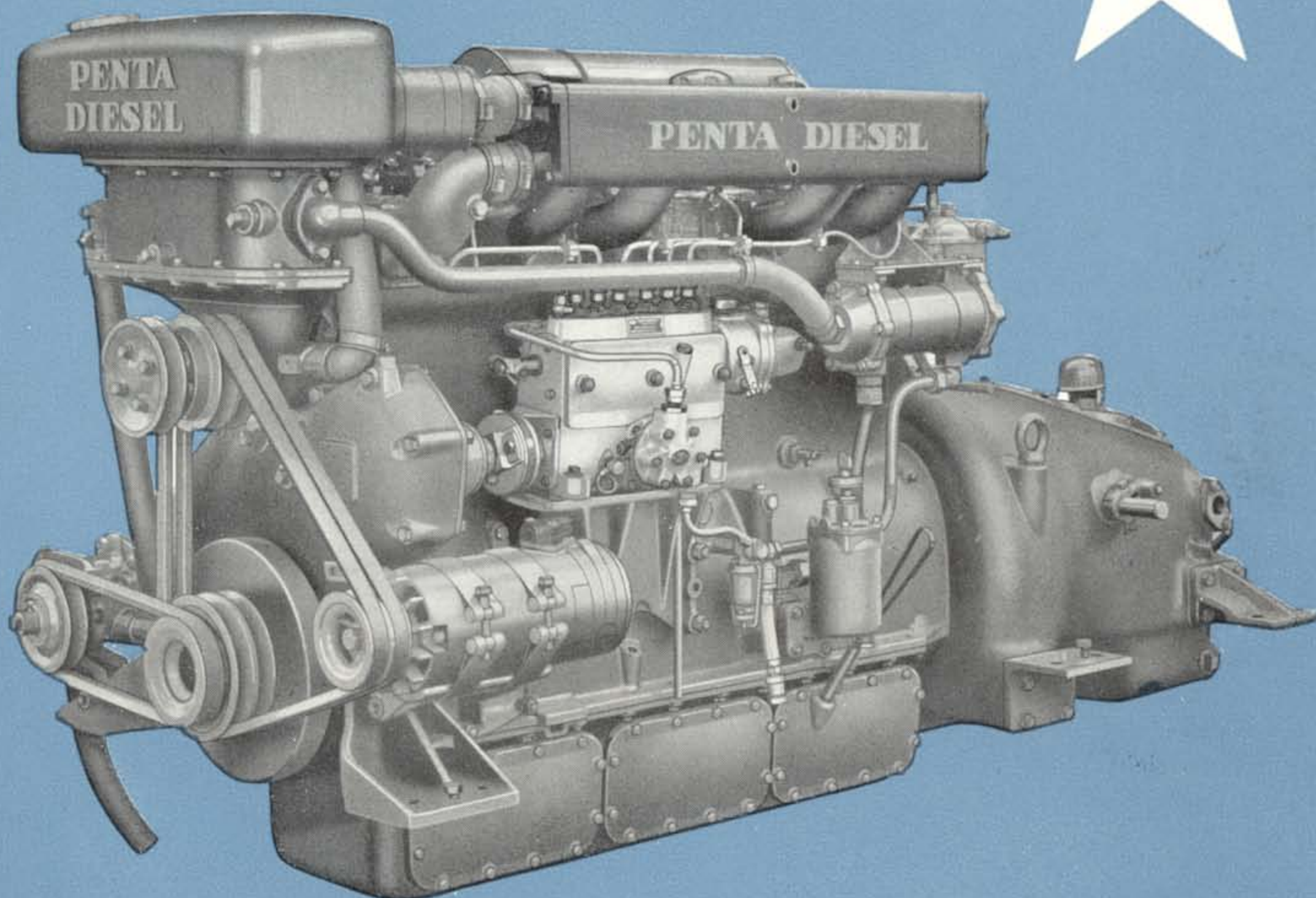


A powerful and reliable engine of compact dimensions and low weight — only 8.5 (18.8 lbs.) per B.H.P. at maximum marine rating. The MD 47 is very suitable for pleasure boats, as well as medium-size commercial craft, such as harbour launches, pilot cutters, fishing boats and small coast

#### D A T A

Marine output range . . . . . 50—82 b.h.p.  
Cylinder capacity . . . . . 4,7 litres  
Number of cylinders . . . . . 6  
Nett weight . . . . . about 700 kg.  
(1540 lb.)

# PENTA MARINE DIESEL ENGINE MD 67



The MD 67, a powerful and reliable engine built to run under all arduous conditions, is a real investment for passenger boats, ferries, fishing boats and other commercial craft, and is also suitable for the seagoing cruiser.

## DATA

Marine output range . . . . . 60—100 b.h.p.  
Cylinder capacity . . . . . 6,7 litres  
Number of cylinders . . . . . 6  
Nett weight . . . . . about 1000 kg.  
(2200 lb.)



# **PENTA MARINE DIESEL ENGINE MD 96**

A suitable engine for passenger boats, ferries, sea-going cruisers, etc. The MD 96 has gained an excellent reputation in passenger boats and sight-seeing boats due to its smooth, vibration-free operation. The engine is normally fitted with a reverse gear with reduction gear and a fresh-water cooling system.

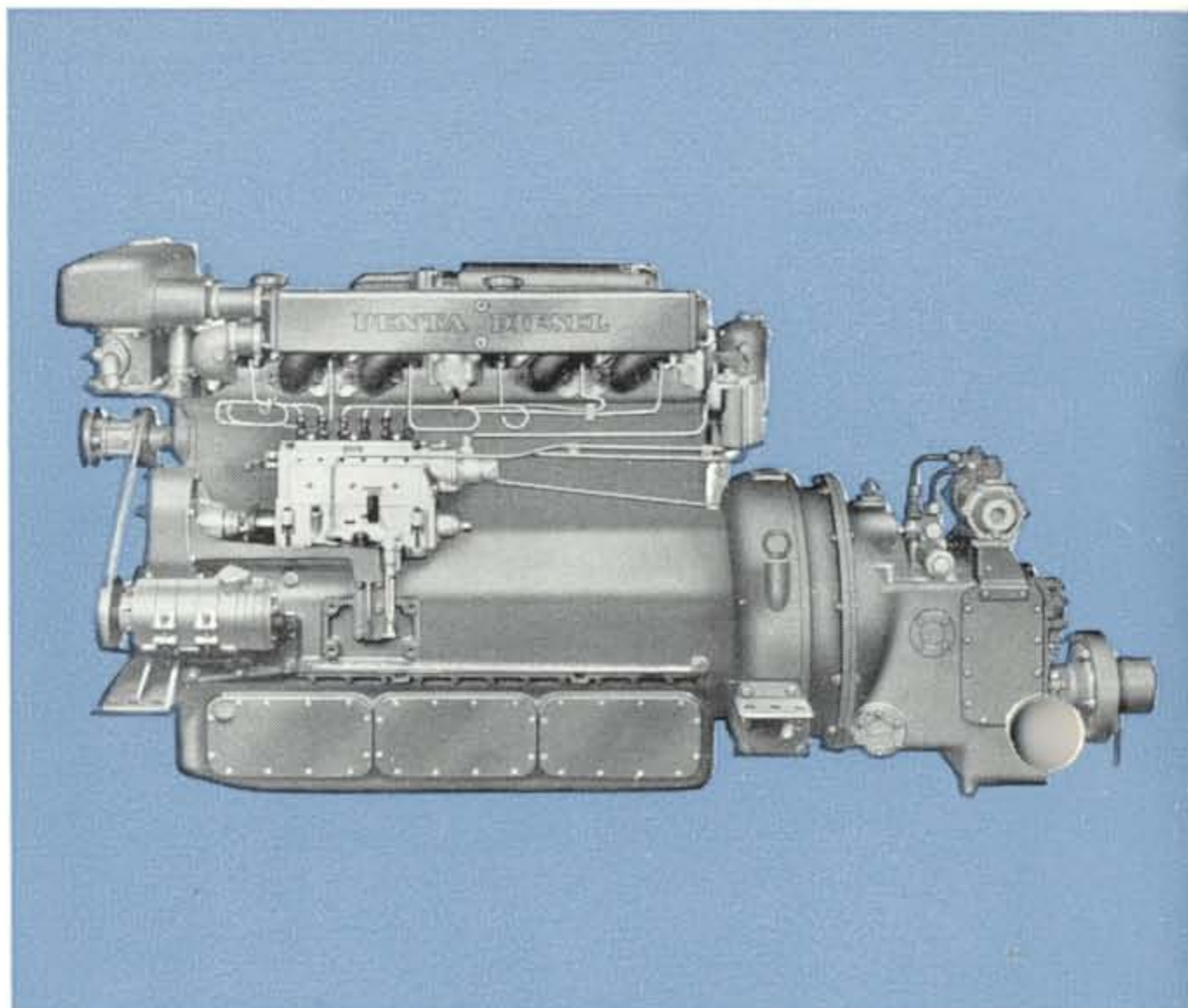
## **D A T A**

Marine output range 85—135 b.h.p.

Cylinder capacity . . . 9,6 litres

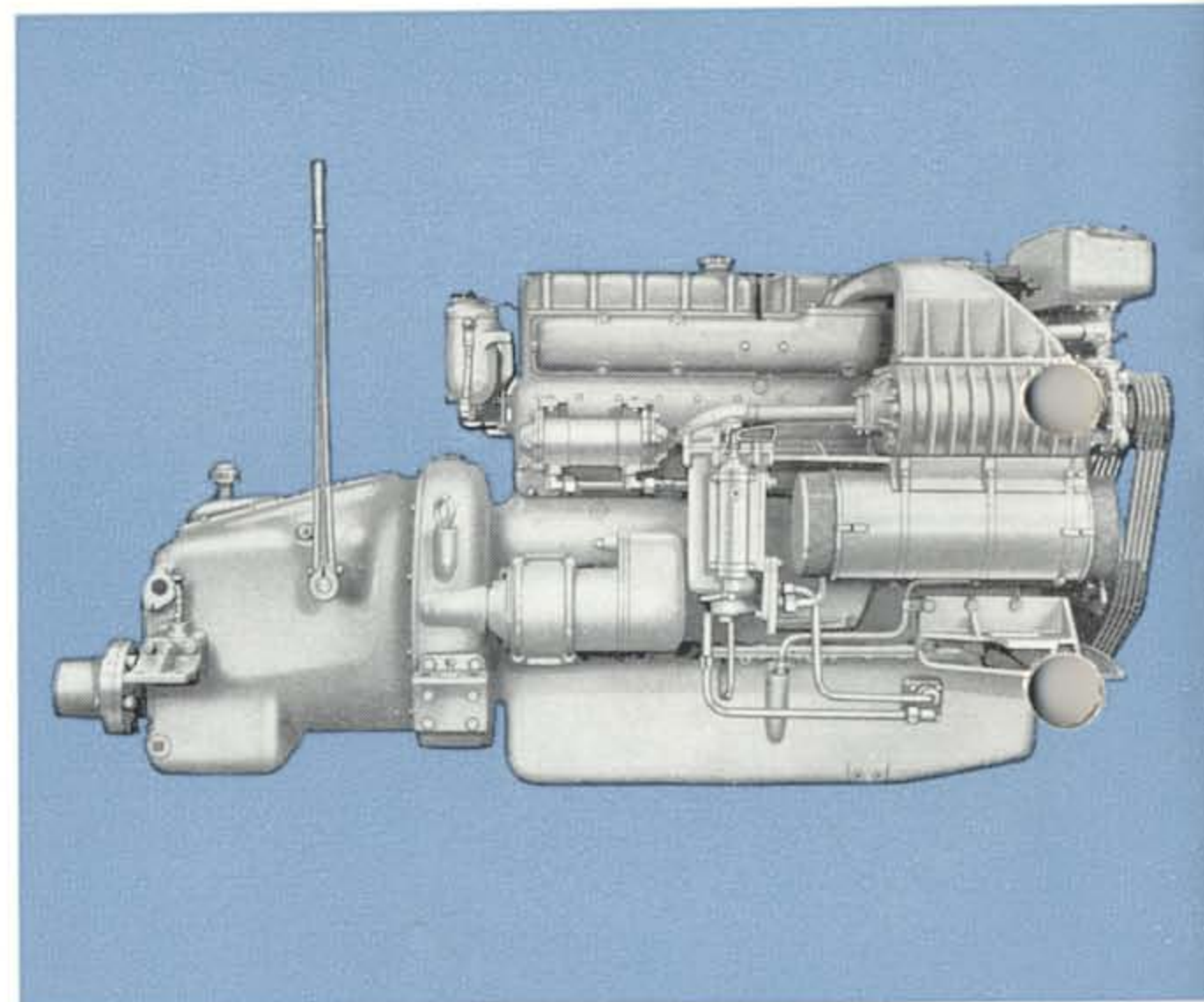
Number of cylinders 6

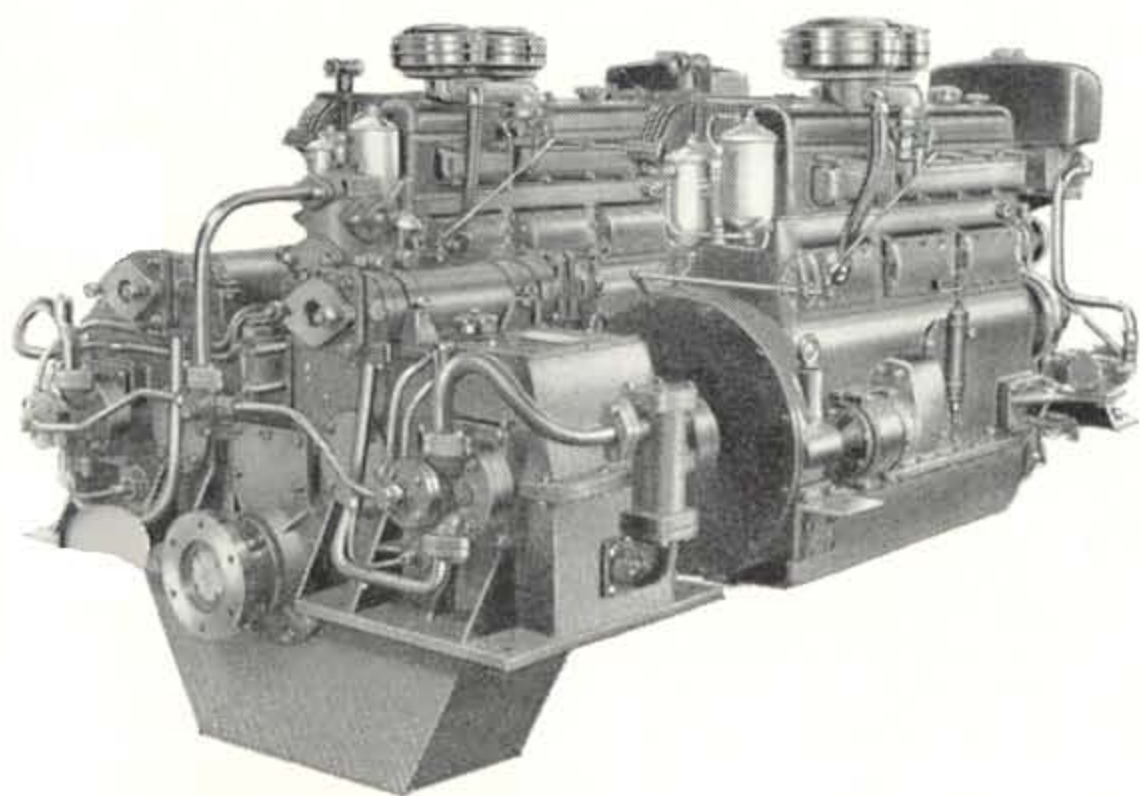
Nett weight . . . . . 1150 kg. (2540 lb.)



# **PENTA MARINE DIESEL ENGINE KMD 96**

The same as the MD 96 but fitted with a compressor which increases the marine output to 165 b.h.p.





## MD 96 TWIN

A special feature of the MD 96 is that it can be fitted with a reverse/reduction gear for twin or quadruple engine installation on the one propeller shaft, whereby — two engines — MD 96 Twin — give a marine output of 260 b.h.p. and four engines a marine output of 520 b.h.p. These combinations are suitable for commercial vessels of various kinds such as passenger boats, tugs, coasters, etc.

