



TMD 47 B

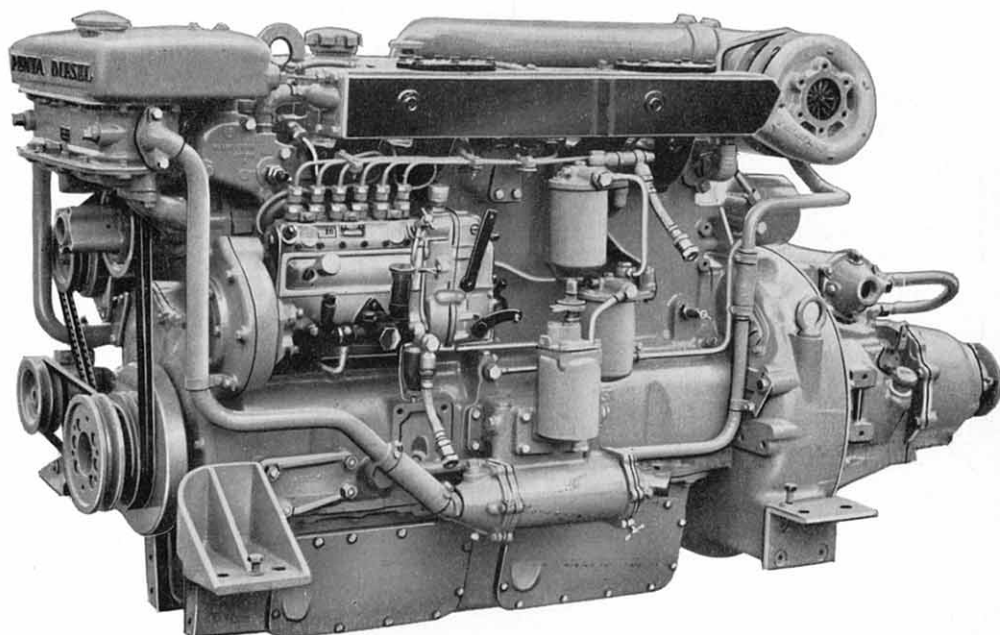
VOLVO PENTA MARINE DIESEL ENGINE • 115 H. P.

The smallest in the series of Volvo Penta large Diesel engines is now also available in a turbo-supercharged version and has the type designation TMD 47 B.

The TMD 47 B is of straightforward and simple design with many improved features. In common with the larger Diesel engines it has pistons with integral ring carriers and wet type cylinder liners.

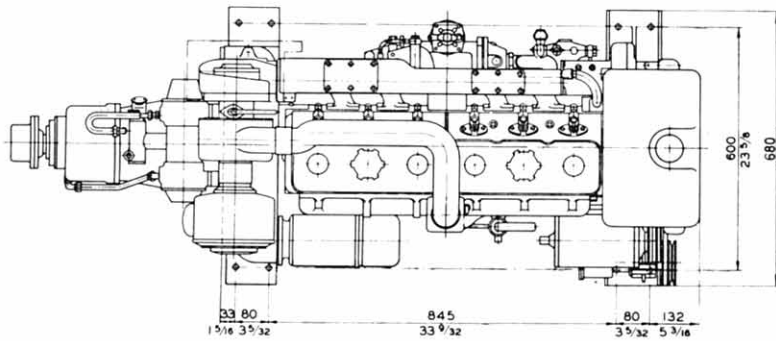
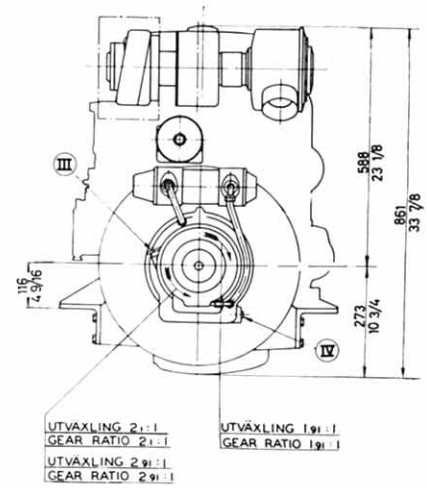
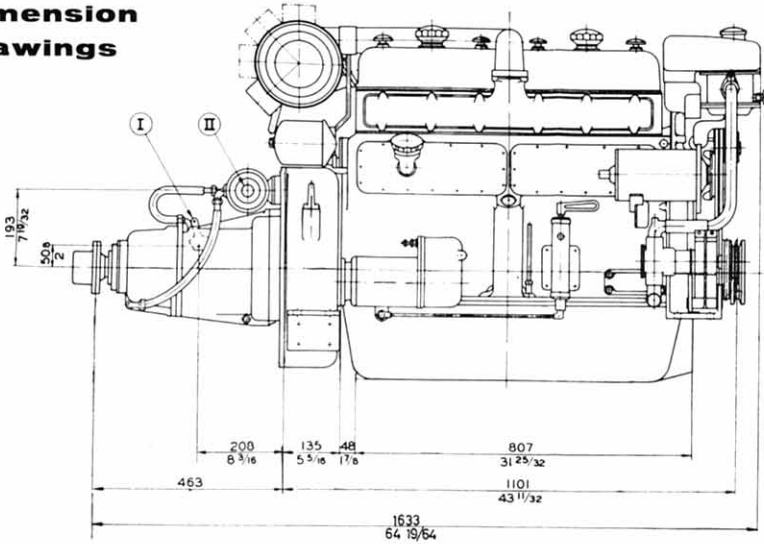
The TMD 47 B has an output of 115 horsepower which, when compared with the weight of the engine and its compact design, makes it the ideal power unit for a motor cruiser, motor yacht or similar vessels. The advantages of a turbo-supercharger are obvious. Engine output is considerably higher and specific fuel consumption lower. A corresponding increase in output on a conventional engine would mean a considerable increase in weight.

The TMD 47 B is supplied with a hydraulically operated reverse gear of the Borg Warner type with a ratio of 2:1 (rotation in both directions) or 3:1 (left-hand rotation).

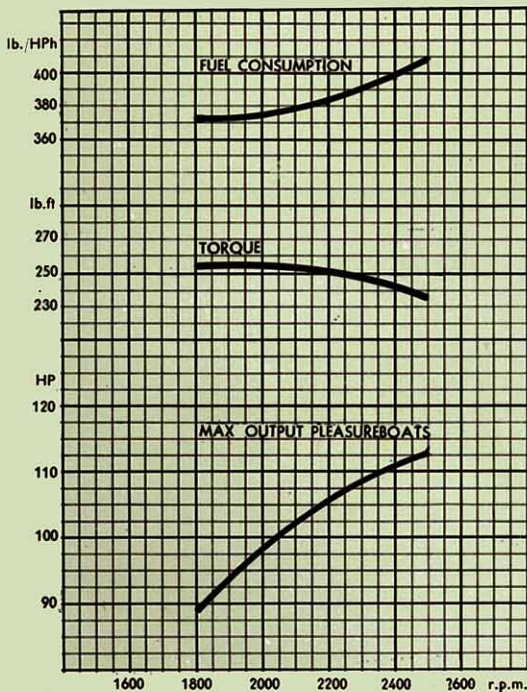


VOLVO PENTA MARINE DIESEL ENGINE, TYPE TMD 47 B

Dimension drawings



- I Control lever
- II In- and outlet for sea water
- III Oil filler and dipstick
- IV Oil drain



Data

- Maximum output 115 h.p. at 2500 r.p.m.
90 h.p. at 1800 r.p.m.
- Marine torque at max. output 36 kgm (260 lb.ft.) at 1900 r.p.m.
- Number of cylinders 6
- Total displacement 4.7 litres (287 cu.in.)
- Bore 95.25 mm (3.750")
- Stroke 110 mm (4.33")
- Valves Overhead
- Max. inclination in boat under way 15°
- Weight with Borg Warner reverse gear, approx. 860 kg (1895 lb.)

AB VOLVO PENTA

Box 392, Göteborg 1, Sweden

Tel. 23 54 60

Cables: Penta